


Product datasheet

Anti-RPB3 antibody ab138436

[2 References](#) [4 Images](#)

Overview

Product name	Anti-RPB3 antibody
Description	Rabbit polyclonal to RPB3
Host species	Rabbit
Tested applications	Suitable for: WB, IP, IHC-P
Species reactivity	Reacts with: Mouse, Human Predicted to work with: Rat, Horse, Chicken, Guinea pig, Cow, Dog, Pig, Xenopus laevis, Chimpanzee, Zebrafish, Rhesus monkey, Gorilla, Orangutan, Xenopus tropicalis 
Immunogen	Synthetic peptide corresponding to Human RPB3 aa 225-275. Sequence: KPERFY YNVESCGSLR PETIVLSALS GLKKKLSDLQ TQLSHEIQSD VLTIN

Database link: [NP_116558.1](#)

 [Run BLAST with](#)

 [Run BLAST with](#)

Positive control	WB: HeLa, Jurkat and 293T cell lysates. IP: HeLa cell lysates. IHC-P: Human breast carcinoma and mouse plasmacytoma tissues.
-------------------------	--

General notes	<p>The Life Science industry has been in the grips of a reproducibility crisis for a number of years. Abcam is leading the way in addressing this with our range of recombinant monoclonal antibodies and knockout edited cell lines for gold-standard validation. Please check that this product meets your needs before purchasing.</p> <p>If you have any questions, special requirements or concerns, please send us an inquiry and/or contact our Support team ahead of purchase. Recommended alternatives for this product can be found below, along with publications, customer reviews and Q&As</p>
----------------------	---

Properties

Form	Liquid
Storage instructions	Shipped at 4°C. Store at +4°C.
Storage buffer	pH: 7 Preservative: 0.09% Sodium azide Constituent: 99.01% Tris citrate/phosphate

	pH 7-8
Purity	Immunogen affinity purified
Clonality	Polyclonal
Isotype	IgG

Applications

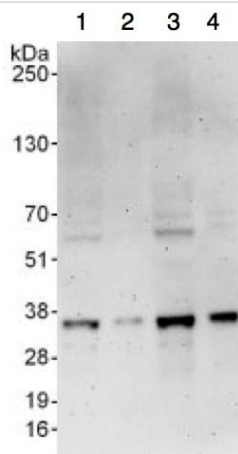
The Abpromise guarantee Our **Abpromise guarantee** covers the use of ab138436 in the following tested applications. The application notes include recommended starting dilutions; optimal dilutions/concentrations should be determined by the end user.

Application	Abreviews	Notes
WB		1/2000 - 1/10000. Predicted molecular weight: 31 kDa.
IP		Use at 2-10 µg/mg of lysate.
IHC-P		1/500 - 1/2000. Perform heat mediated antigen retrieval with citrate buffer pH 6 before commencing with IHC staining protocol.

Target

Function	DNA-dependent RNA polymerase catalyzes the transcription of DNA into RNA using the four ribonucleoside triphosphates as substrates. Component of RNA polymerase II which synthesizes mRNA precursors and many functional non-coding RNAs. Pol II is the central component of the basal RNA polymerase II transcription machinery. It is composed of mobile elements that move relative to each other. RPB3 is part of the core element with the central large cleft and the clamp element that moves to open and close the cleft.
Sequence similarities	Belongs to the archaeal RpoD/eukaryotic RPB3 RNA polymerase subunit family.
Cellular localization	Nucleus.

Images



Western blot - Anti-RPB3 antibody (ab138436)

All lanes : Anti-RPB3 antibody (ab138436) at 1/2000 dilution

Lane 1 : HeLa cell lysate at 50 µg

Lane 2 : HeLa cell lysate at 15 µg

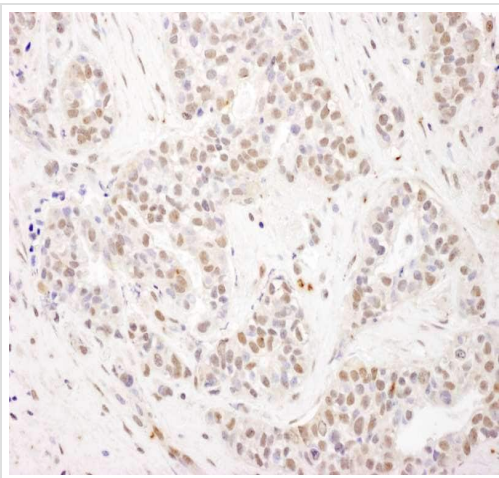
Lane 3 : 293T cell lysate at 50 µg

Lane 4 : Jurkat cell lysate at 50 µg

Developed using the ECL technique.

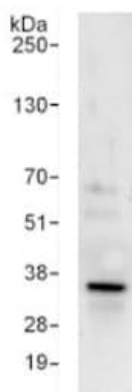
Predicted band size: 31 kDa

Exposure time: 3 minutes



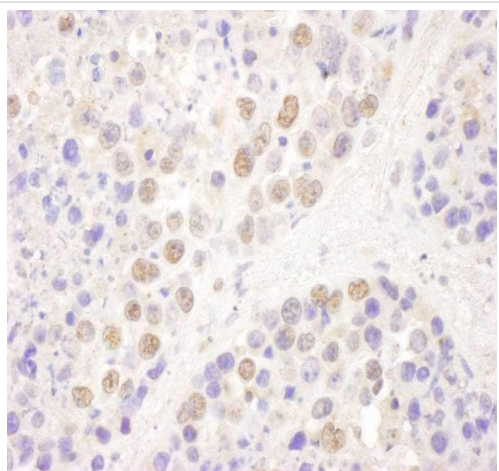
Immunohistochemistry (Formalin/PFA-fixed paraffin-embedded sections) - Anti-RPB3 antibody (ab138436)

Immunohistochemical analysis of formalin-fixed, paraffin-embedded human breast carcinoma tissue labelling RPB3 with ab138436 at a 1/1000 dilution.



Immunoprecipitation - Anti-RPB3 antibody (ab138436)

Immunoprecipitation detection of RPB3 in HeLa whole cell lysate (1 mg/IP; 20% of IP loaded/lane) using ab138436 at 6µg/mg lysate. Subsequent Western blot detection step was performed using ab138436 at 1µg/ml. Chemiluminescence with an exposure time of 10 seconds.



Immunohistochemical analysis of formalin-fixed, paraffin-embedded mouse plasmacytoma tissue labelling RPB3 with ab138436 at a 1/1000 dilution.

Immunohistochemistry (Formalin/PFA-fixed paraffin-embedded sections) - Anti-RPB3 antibody (ab138436)

Please note: All products are "FOR RESEARCH USE ONLY. NOT FOR USE IN DIAGNOSTIC PROCEDURES"

Our Abpromise to you: Quality guaranteed and expert technical support

- Replacement or refund for products not performing as stated on the datasheet
- Valid for 12 months from date of delivery
- Response to your inquiry within 24 hours
- We provide support in Chinese, English, French, German, Japanese and Spanish
- Extensive multi-media technical resources to help you
- We investigate all quality concerns to ensure our products perform to the highest standards

If the product does not perform as described on this datasheet, we will offer a refund or replacement. For full details of the Abpromise, please visit <https://www.abcam.com/abpromise> or contact our technical team.

Terms and conditions

- Guarantee only valid for products bought direct from Abcam or one of our authorized distributors