

## Product datasheet

# Anti-RPL10A antibody [EPR12344] ab174318

Recombinant RabMAb

★★★★☆ [1 Abreviews](#) [10 References](#) [7 Images](#)

### Overview

<b>Product name</b>	Anti-RPL10A antibody [EPR12344]
<b>Description</b>	Rabbit monoclonal [EPR12344] to RPL10A
<b>Host species</b>	Rabbit
<b>Tested applications</b>	<b>Suitable for:</b> Flow Cyt (Intra), ICC/IF, WB, IHC-P <b>Unsuitable for:</b> IP
<b>Species reactivity</b>	<b>Reacts with:</b> Mouse, Rat, Human
<b>Immunogen</b>	Recombinant fragment within Human RPL10A. The exact sequence is proprietary. Database link: <a href="#">P62906</a>
<b>Positive control</b>	WB: Jurkat, HeLa, HepG2 whole cell lysates and Mouse brain, Rat brain, Mouse spleen and Rat spleen lysates Flow cyt: Jurkat cells, ICC/IF: HeLa cells, IHC: rat liver tissue, mouse liver tissue, human colon tissue
<b>General notes</b>	This product is a recombinant monoclonal antibody, which offers several advantages including: <ul style="list-style-type: none"><li>- High batch-to-batch consistency and reproducibility</li><li>- Improved sensitivity and specificity</li><li>- Long-term security of supply</li><li>- Animal-free production</li></ul> For more information <a href="#">see here</a> . Our RabMAb <sup>®</sup> technology is a patented hybridoma-based technology for making rabbit monoclonal antibodies. For details on our patents, please refer to <a href="#">RabMAb<sup>®</sup> patents</a> .

### Properties

<b>Form</b>	Liquid
<b>Storage instructions</b>	Shipped at 4°C. Store at +4°C short term (1-2 weeks). Upon delivery aliquot. Store at -20°C long term. Avoid freeze / thaw cycle.
<b>Storage buffer</b>	pH: 7.20 Preservative: 0.01% Sodium azide Constituents: 59% PBS, 40% Glycerol (glycerin, glycerine), 0.5% BSA
<b>Purity</b>	Protein A purified
<b>Clonality</b>	Monoclonal

Clone number                      EPR12344

Isotype                                IgG

## Applications

**The Abpromise guarantee**            Our **Abpromise guarantee** covers the use of ab174318 in the following tested applications.

The application notes include recommended starting dilutions; optimal dilutions/concentrations should be determined by the end user.

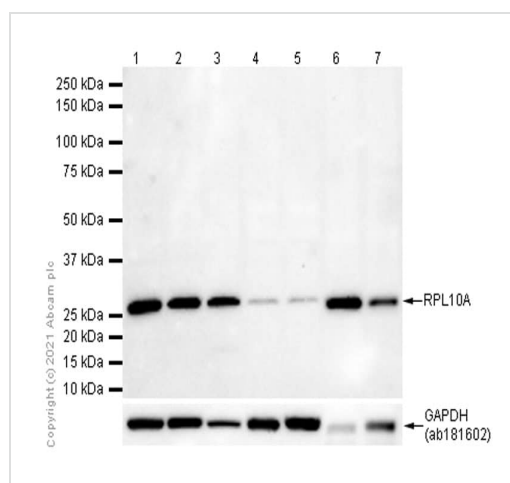
Application	Abreviews	Notes
Flow Cyt (Intra)		1/20. <b>ab172730</b> - Rabbit monoclonal IgG, is suitable for use as an isotype control with this antibody. For unpurified use at 1/10 - 1/100 dilution.
ICC/IF		1/500. For unpurified use at 1/100 dilution.
WB	★★★★★ (1)	1/10000. Predicted molecular weight: 25 kDa. For unpurified use at 1/10000 - 1/10000 dilution.
IHC-P		1/1000. Perform heat mediated antigen retrieval with citrate buffer pH 6 before commencing with IHC staining protocol. For unpurified use at 1/100 - 1/250 dilution.

**Application notes**                      Is unsuitable for IP.

## Target

**Sequence similarities**                      Belongs to the ribosomal protein L1P family.

## Images



Western blot - Anti-RPL10A antibody [EPR12344] (ab174318)

**All lanes** : Anti-RPL10A antibody [EPR12344] (ab174318) at 1/10000 dilution (Purified)

**Lane 1** : Jurkat (Human T cell leukemia T lymphocyte) whole cell lysate

**Lane 2** : HeLa (Human cervix adenocarcinoma epithelial cell) whole cell lysate

**Lane 3** : HepG2 (Human hepatocellular carcinoma epithelial cell) whole cell lysate

**Lane 4** : Mouse brain lysate

**Lane 5** : Rat brain lysate

**Lane 6** : Mouse spleen lysate

**Lane 7** : Rat spleen lysate

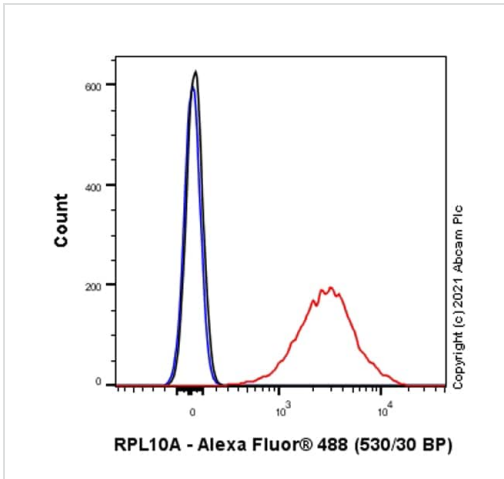
Lysates/proteins at 20 µg per lane.

### Secondary

**All lanes** : Goat Anti-Rabbit IgG H&L (HRP) (**ab97051**) at 1/20000 dilution

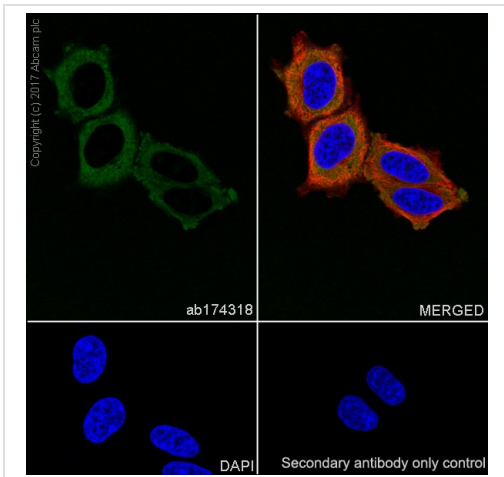
**Predicted band size:** 25 kDa

**Observed band size:** 25 kDa



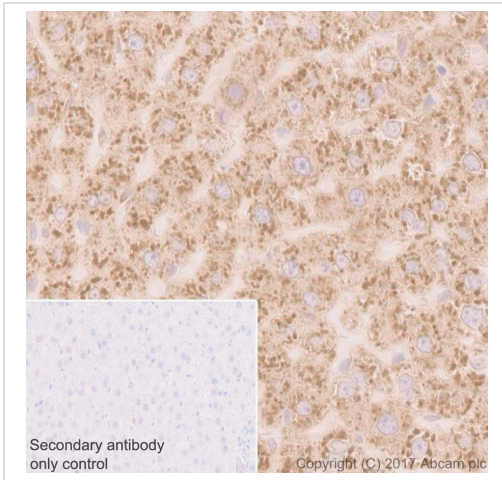
Flow Cytometry analysis of Jurkat (Human T cell leukemia T lymphocyte) cells labelling RPL10A with Purified ab174318 at 1:20 dilution (10 µg/ml) (Red). Cells were fixed with 4% Paraformaldehyde and permeabilised with 90% Methanol. A Goat anti rabbit IgG (Alexa Fluor® 488, **ab150077**) secondary antibody was used at 1:2000. Isotype control - Rabbit monoclonal IgG (Black). Unlabelled control - Cell without incubation with primary antibody and secondary antibody (Blue).

Flow Cytometry (Intracellular) - Anti-RPL10A antibody [EPR12344] (ab174318)



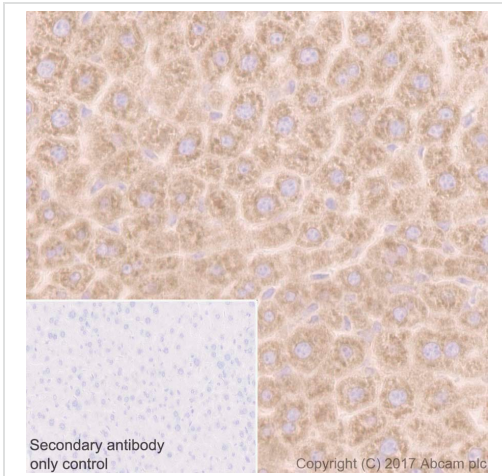
Immunocytochemistry analysis of HeLa (Human cervix adenocarcinoma epithelial cell) cells labeling RPL10A with Purified ab174318 at 1:500 dilution (0.4 µg/ml). Cells were fixed in 4% Paraformaldehyde and permeabilized with 0.1% tritonX-100. Cells were counterstained with Ab195889 Anti-alpha Tubulin antibody [DM1A] - Microtubule Marker (Alexa Fluor® 594) 1:200 (2.5 µg/ml). Goat anti rabbit IgG (Alexa Fluor® 488, **ab150077**) was used as the secondary antibody at 1:1000 (2 µg/ml) dilution. DAPI (blue) was used as nuclear counterstain. PBS instead of the primary antibody was used as the secondary antibody only control.

Immunocytochemistry/ Immunofluorescence - Anti-RPL10A antibody [EPR12344] (ab174318)



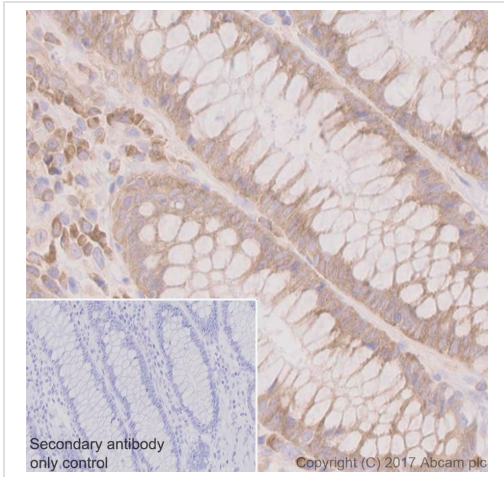
Immunohistochemistry (Formalin/PFA-fixed paraffin-embedded sections) - Anti-RPL10A antibody [EPR12344] (ab174318)

Immunohistochemistry (Formalin/PFA-fixed paraffin-embedded sections) analysis of rat liver tissue sections labeling RPL10A with Purified ab174318 at 1:1000 dilution (0.207 µg/ml). Heat mediated antigen retrieval was performed using Perform heat mediated antigen retrieval using [ab93684](#) (Tris/EDTA buffer, pH 9.0). Tissue was counterstained with Hematoxylin. ImmunoHistoProbe one step HRP Polymer (ready to use) secondary antibody was used. PBS instead of the primary antibody was used as the negative control.



Immunohistochemistry (Formalin/PFA-fixed paraffin-embedded sections) - Anti-RPL10A antibody [EPR12344] (ab174318)

Immunohistochemistry (Formalin/PFA-fixed paraffin-embedded sections) analysis of mouse liver tissue sections labeling RPL10A with Purified ab174318 at 1:1000 dilution (0.207 µg/ml). Heat mediated antigen retrieval was performed using Perform heat mediated antigen retrieval using [ab93684](#) (Tris/EDTA buffer, pH 9.0). Tissue was counterstained with Hematoxylin. ImmunoHistoProbe one step HRP Polymer (ready to use) secondary antibody was used. PBS instead of the primary antibody was used as the negative control.



Immunohistochemistry (Formalin/PFA-fixed paraffin-embedded sections) analysis of human colon tissue sections labeling RPL10A with Purified ab174318 at 1:1000 dilution (0.207 µg/ml). Heat mediated antigen retrieval was performed using Perform heat mediated antigen retrieval using **ab93684** (Tris/EDTA buffer, pH 9.0). Tissue was counterstained with Hematoxylin. ImmunoHistoProbe one step HRP Polymer (ready to use) secondary antibody was used. PBS instead of the primary antibody was used as the negative control.

Immunohistochemistry (Formalin/PFA-fixed paraffin-embedded sections) - Anti-RPL10A antibody [EPR12344] (ab174318)

Why choose a recombinant antibody?

 <b>Research with confidence</b> Consistent and reproducible results	 <b>Long-term and scalable supply</b> Recombinant technology
 <b>Success from the first experiment</b> Confirmed specificity	 <b>Ethical standards compliant</b> Animal-free production

Anti-RPL10A antibody [EPR12344] (ab174318)

**Please note:** All products are "FOR RESEARCH USE ONLY. NOT FOR USE IN DIAGNOSTIC PROCEDURES"

**Our Abpromise to you: Quality guaranteed and expert technical support**

- Replacement or refund for products not performing as stated on the datasheet
- Valid for 12 months from date of delivery

- Response to your inquiry within 24 hours
- We provide support in Chinese, English, French, German, Japanese and Spanish
- Extensive multi-media technical resources to help you
- We investigate all quality concerns to ensure our products perform to the highest standards

If the product does not perform as described on this datasheet, we will offer a refund or replacement. For full details of the Abpromise, please visit <https://www.abcam.com/abpromise> or contact our technical team.

### **Terms and conditions**

---

- Guarantee only valid for products bought direct from Abcam or one of our authorized distributors