

Product datasheet

Anti-RPL10A antibody [EPR12344] - BSA and Azide free ab240179

Recombinant RabMAb

[7 Images](#)

Overview

Product name	Anti-RPL10A antibody [EPR12344] - BSA and Azide free
Description	Rabbit monoclonal [EPR12344] to RPL10A - BSA and Azide free
Host species	Rabbit
Tested applications	Suitable for: Flow Cyt (Intra), IHC-P, WB, ICC/IF Unsuitable for: IP
Species reactivity	Reacts with: Mouse, Rat, Human
Immunogen	Recombinant fragment within Human RPL10A. The exact sequence is proprietary. Database link: P62906
Positive control	WB: Jurkat, HeLa, HepG2 whole cell lysates and Mouse brain, Rat brain, Mouse spleen and Rat spleen lysates Flow cyt: Jurkat cells, ICC/IF: HeLa cells, IHC: rat liver tissue, mouse liver tissue, human colon tissue
General notes	<p>ab240179 is the carrier-free version of ab174318.</p> <p>Our carrier-free antibodies are typically supplied in a PBS-only formulation, purified and free of BSA, sodium azide and glycerol. The carrier-free buffer and high concentration allow for increased conjugation efficiency.</p> <p>This conjugation-ready format is designed for use with fluorochromes, metal isotopes, oligonucleotides, and enzymes, which makes them ideal for antibody labelling, functional and cell-based assays, flow-based assays (e.g. mass cytometry) and Multiplex Imaging applications.</p> <p>Use our conjugation kits for antibody conjugates that are ready-to-use in as little as 20 minutes with <1 minute hands-on-time and 100% antibody recovery: available for fluorescent dyes, HRP, biotin and gold.</p> <p>This product is compatible with the Maxpar[®] Antibody Labeling Kit from Fluidigm, without the need for antibody preparation. Maxpar[®] is a trademark of Fluidigm Canada Inc.</p> <p>This product is a recombinant monoclonal antibody, which offers several advantages including:</p> <ul style="list-style-type: none">- High batch-to-batch consistency and reproducibility- Improved sensitivity and specificity- Long-term security of supply- Animal-free production <p>For more information see here.</p>

Our RabMAb[®] technology is a patented hybridoma-based technology for making rabbit monoclonal antibodies. For details on our patents, please refer to [RabMAb[®] patents](#).

Properties

Form	Liquid
Storage instructions	Shipped at 4°C. Store at +4°C. Do Not Freeze.
Storage buffer	pH: 7.2 Constituent: PBS
Carrier free	Yes
Purity	Protein A purified
Clonality	Monoclonal
Clone number	EPR12344
Isotype	IgG

Applications

The Abpromise guarantee Our [Abpromise guarantee](#) covers the use of ab240179 in the following tested applications. The application notes include recommended starting dilutions; optimal dilutions/concentrations should be determined by the end user.

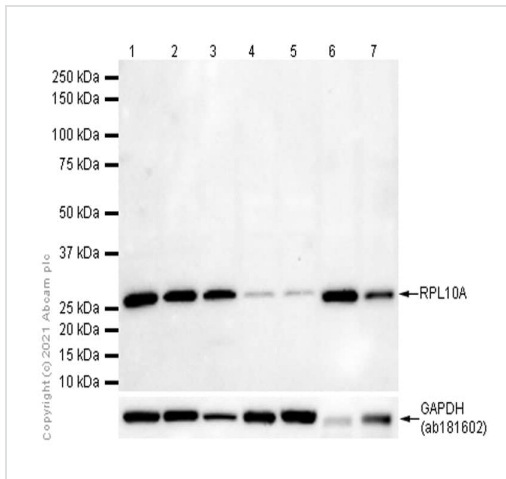
Application	Abreviews	Notes
Flow Cyt (Intra)		Use at an assay dependent concentration. ab199376 - Rabbit monoclonal IgG, is suitable for use as an isotype control with this antibody.
IHC-P		Use at an assay dependent concentration. Perform heat mediated antigen retrieval with citrate buffer pH 6 before commencing with IHC staining protocol.
WB		Use at an assay dependent concentration. Predicted molecular weight: 25 kDa.
ICC/IF		Use at an assay dependent concentration.

Application notes Is unsuitable for IP.

Target

Sequence similarities Belongs to the ribosomal protein L1P family.

Images



Western blot - Anti-RPL10A antibody [EPR12344] - BSA and Azide free (ab240179)

All lanes : Anti-RPL10A antibody [EPR12344] ([ab174318](#)) at 1/10000 dilution (Purified)

Lane 1 : Jurkat (Human T cell leukemia T lymphocyte) whole cell lysate

Lane 2 : HeLa (Human cervix adenocarcinoma epithelial cell) whole cell lysate

Lane 3 : HepG2 (Human hepatocellular carcinoma epithelial cell) whole cell lysate

Lane 4 : Mouse brain lysate

Lane 5 : Rat brain lysate

Lane 6 : Mouse spleen lysate

Lane 7 : Rat spleen lysate

Lysates/proteins at 20 µg per lane.

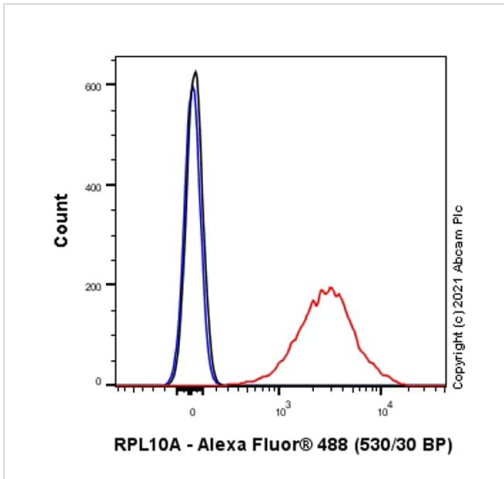
Secondary

All lanes : Goat Anti-Rabbit IgG H&L (HRP) ([ab97051](#)) at 1/20000 dilution

Predicted band size: 25 kDa

Observed band size: 25 kDa

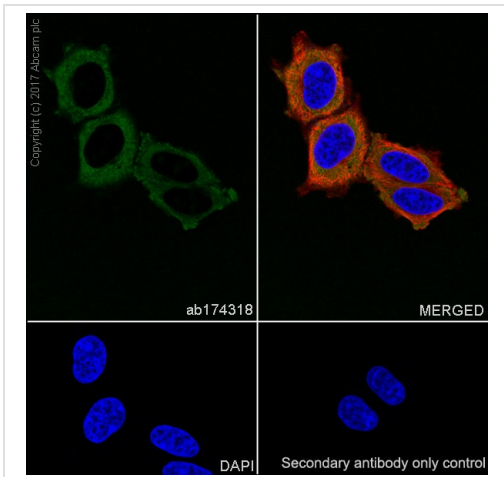
This data was developed using [ab174318](#), the same antibody clone in a different buffer formulation.



Flow Cytometry (Intracellular) - Anti-RPL10A antibody [EPR12344] - BSA and Azide free (ab240179)

This data was developed using [ab174318](#), the same antibody clone in a different buffer formulation.

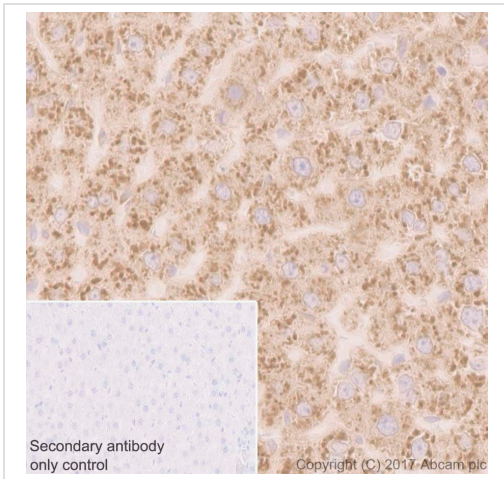
Flow Cytometry analysis of Jurkat (Human T cell leukemia T lymphocyte) cells labelling RPL10A with Purified [ab174318](#) at 1:20 dilution (10 µg/ml) (Red). Cells were fixed with 4% Paraformaldehyde and permeabilised with 90% Methanol. A Goat anti rabbit IgG (Alexa Fluor® 488, [ab150077](#)) secondary antibody was used at 1:2000. Isotype control - Rabbit monoclonal IgG (Black). Unlabelled control - Cell without incubation with primary antibody and secondary antibody (Blue).



Immunocytochemistry/ Immunofluorescence - Anti-RPL10A antibody [EPR12344] - BSA and Azide free (ab240179)

This data was developed using [ab174318](#), the same antibody clone in a different buffer formulation.

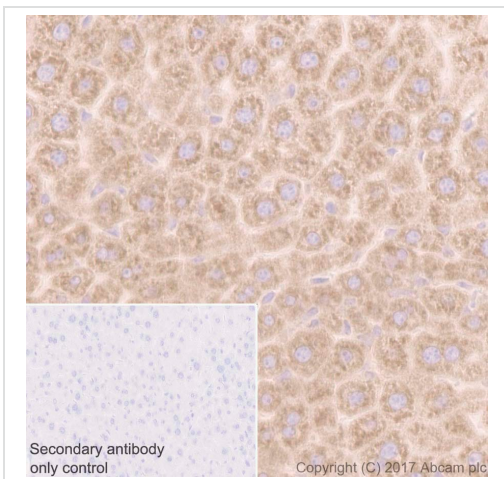
Immunocytochemistry analysis of HeLa (Human cervix adenocarcinoma epithelial cell) cells labeling RPL10A with Purified [ab174318](#) at 1:500 dilution (0.4 µg/ml). Cells were fixed in 4% Paraformaldehyde and permeabilized with 0.1% tritonX-100. Cells were counterstained with Ab195889 Anti-alpha Tubulin antibody [DM1A] - Microtubule Marker (Alexa Fluor® 594) 1:200 (2.5 µg/ml). Goat anti rabbit IgG (Alexa Fluor® 488, [ab150077](#)) was used as the secondary antibody at 1:1000 (2 µg/ml) dilution. DAPI (blue) was used as nuclear counterstain. PBS instead of the primary antibody was used as the secondary antibody only control.



Immunohistochemistry (Formalin/PFA-fixed paraffin-embedded sections) - Anti-RPL10A antibody [EPR12344] - BSA and Azide free (ab240179)

This data was developed using **ab174318**, the same antibody clone in a different buffer formulation.

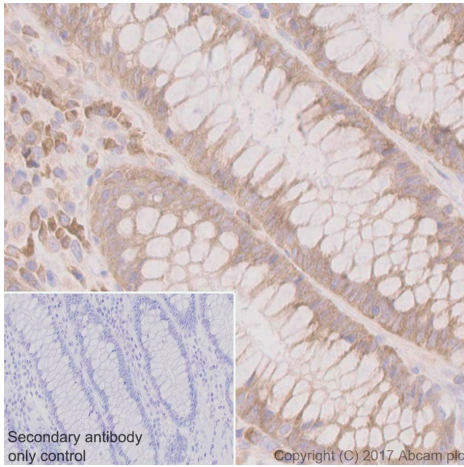
Immunohistochemistry (Formalin/PFA-fixed paraffin-embedded sections) analysis of rat liver tissue sections labeling RPL10A with Purified **ab174318** at 1:1000 dilution (0.207 µg/ml). Heat mediated antigen retrieval was performed using Perform heat mediated antigen retrieval using **ab93684** (Tris/EDTA buffer, pH 9.0). Tissue was counterstained with Hematoxylin. ImmunoHistoProbe one step HRP Polymer (ready to use) secondary antibody was used. PBS instead of the primary antibody was used as the negative control.



Immunohistochemistry (Formalin/PFA-fixed paraffin-embedded sections) - Anti-RPL10A antibody [EPR12344] - BSA and Azide free (ab240179)

This data was developed using **ab174318**, the same antibody clone in a different buffer formulation.

Immunohistochemistry (Formalin/PFA-fixed paraffin-embedded sections) analysis of mouse liver tissue sections labeling RPL10A with Purified **ab174318** at 1:1000 dilution (0.207 µg/ml). Heat mediated antigen retrieval was performed using Perform heat mediated antigen retrieval using **ab93684** (Tris/EDTA buffer, pH 9.0). Tissue was counterstained with Hematoxylin. ImmunoHistoProbe one step HRP Polymer (ready to use) secondary antibody was used. PBS instead of the primary antibody was used as the negative control.







This data was developed using **ab174318**, the same antibody clone in a different buffer formulation.

Immunohistochemistry (Formalin/PFA-fixed paraffin-embedded sections) analysis of human colon tissue sections labeling RPL10A with Purified **ab174318** at 1:1000 dilution (0.207 µg/ml). Heat mediated antigen retrieval was performed using Perform heat mediated antigen retrieval using **ab93684** (Tris/EDTA buffer, pH 9.0). Tissue was counterstained with Hematoxylin.

ImmunoHistoProbe one step HRP Polymer (ready to use) secondary antibody was used. PBS instead of the primary antibody was used as the negative control.

Immunohistochemistry (Formalin/PFA-fixed paraffin-embedded sections) - Anti-RPL10A antibody [EPR12344] - BSA and Azide free (ab240179)

Why choose a recombinant antibody?

 <p>Research with confidence Consistent and reproducible results</p>	 <p>Long-term and scalable supply Recombinant technology</p>
 <p>Success from the first experiment Confirmed specificity</p>	 <p>Ethical standards compliant Animal-free production</p>

Anti-RPL10A antibody [EPR12344] - BSA and Azide free (ab240179)

Please note: All products are "FOR RESEARCH USE ONLY. NOT FOR USE IN DIAGNOSTIC PROCEDURES"

Our Abpromise to you: Quality guaranteed and expert technical support

- Replacement or refund for products not performing as stated on the datasheet
- Valid for 12 months from date of delivery
- Response to your inquiry within 24 hours
- We provide support in Chinese, English, French, German, Japanese and Spanish
- Extensive multi-media technical resources to help you
- We investigate all quality concerns to ensure our products perform to the highest standards

If the product does not perform as described on this datasheet, we will offer a refund or replacement. For full details of the Abpromise, please visit <https://www.abcam.com/abpromise> or contact our technical team.

Terms and conditions

- Guarantee only valid for products bought direct from Abcam or one of our authorized distributors