




## Product datasheet

### Anti-RPL21 antibody ab194664

4 Images

#### Overview

<b>Product name</b>	Anti-RPL21 antibody
<b>Description</b>	Mouse polyclonal to RPL21
<b>Host species</b>	Mouse
<b>Tested applications</b>	<b>Suitable for:</b> WB
<b>Species reactivity</b>	<b>Reacts with:</b> Mouse, Human <b>Predicted to work with:</b> Rat, Goat 
<b>Immunogen</b>	Recombinant fragment (GST-tag) corresponding to Human RPL21 aa 1-100. (NP_000973). Database link: <a href="#">P46778</a>  <a href="#">Run BLAST with</a>  <a href="#">Run BLAST with</a>
<b>Positive control</b>	HepG2, RAW 264.7 and NIH 3T3 cell lysates; Recombinant Human RPL21 protein (immunogen).
<b>General notes</b>	<p>The Life Science industry has been in the grips of a reproducibility crisis for a number of years. Abcam is leading the way in addressing this with our range of recombinant monoclonal antibodies and knockout edited cell lines for gold-standard validation. Please check that this product meets your needs before purchasing.</p> <p>If you have any questions, special requirements or concerns, please send us an inquiry and/or contact our Support team ahead of purchase. Recommended alternatives for this product can be found below, along with publications, customer reviews and Q&amp;As</p>

#### Properties

<b>Form</b>	Liquid
<b>Storage instructions</b>	Shipped at 4°C. Store at +4°C short term (1-2 weeks). Upon delivery aliquot. Store at -20°C long term. Avoid freeze / thaw cycle.
<b>Storage buffer</b>	Constituent: 50% Glycerol (glycerin, glycerine)
<b>Purity</b>	Whole antiserum
<b>Clonality</b>	Polyclonal
<b>Isotype</b>	IgG

#### Applications

## The Abpromise guarantee

Our **Abpromise guarantee** covers the use of ab194664 in the following tested applications.

The application notes include recommended starting dilutions; optimal dilutions/concentrations should be determined by the end user.

Application	Abreviews	Notes
WB		1/500 - 1/2500. Predicted molecular weight: 19 kDa.

## Target

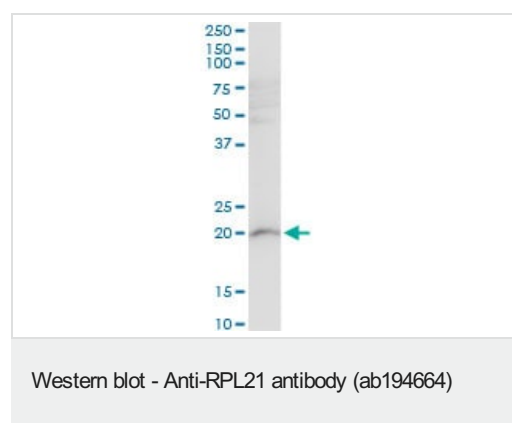
### Involvement in disease

Note=Defects in RPL21 are a cause of generalized hypotrichosis simplex (HTS). A rare form of non-syndromic hereditary hypotrichosis without characteristic hair shaft anomalies. Affected individuals typically show normal hair at birth, but hair loss and thinning of the hair shaft start during early childhood and progress with age.

### Sequence similarities

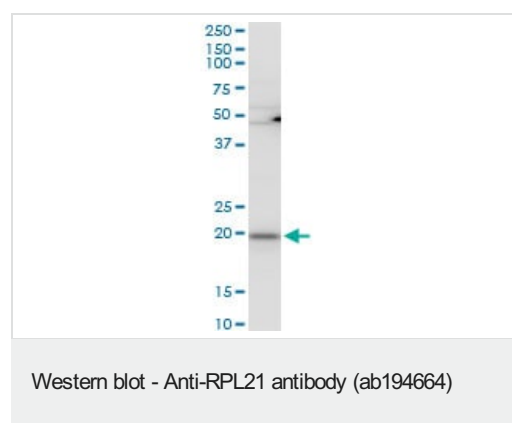
Belongs to the ribosomal protein L21e family.

## Images



Anti-RPL21 antibody (ab194664) at 1/500 dilution + NIH 3T3 cell lysate at 50 µg

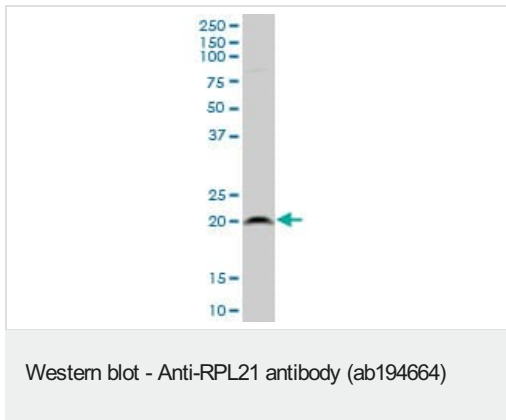
**Predicted band size:** 19 kDa



Anti-RPL21 antibody (ab194664) at 1/500 dilution + RAW 264.7 cell lysate at 50 µg

Developed using the ECL technique.

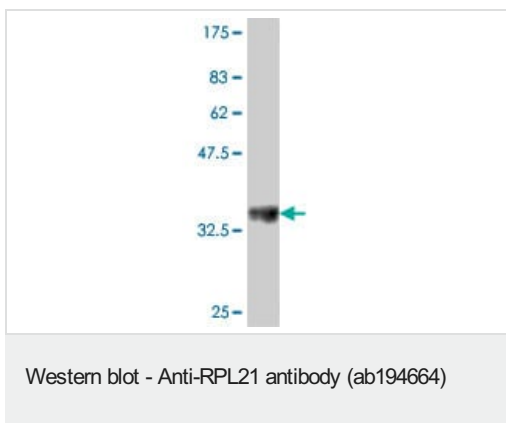
**Predicted band size:** 19 kDa



Anti-RPL21 antibody (ab194664) at 1/500 dilution + HepG2 cell lysate at 50 µg

Developed using the ECL technique.

**Predicted band size:** 19 kDa



Anti-RPL21 antibody (ab194664) at 1/1000 dilution + Recombinant Human RPL21 protein (immunogen) at 0.2 µg

Developed using the ECL technique.

**Predicted band size:** 19 kDa

Predicted MWt of immunogen: 35.35 kDa.

**Please note:** All products are "FOR RESEARCH USE ONLY. NOT FOR USE IN DIAGNOSTIC PROCEDURES"

### Our Abpromise to you: Quality guaranteed and expert technical support

- Replacement or refund for products not performing as stated on the datasheet
- Valid for 12 months from date of delivery
- Response to your inquiry within 24 hours
- We provide support in Chinese, English, French, German, Japanese and Spanish
- Extensive multi-media technical resources to help you
- We investigate all quality concerns to ensure our products perform to the highest standards

If the product does not perform as described on this datasheet, we will offer a refund or replacement. For full details of the Abpromise, please visit <https://www.abcam.com/abpromise> or contact our technical team.

### Terms and conditions

- Guarantee only valid for products bought direct from Abcam or one of our authorized distributors