

## Product datasheet

# Anti-RPL22 antibody ab77720

★ ★ ★ ★ ★ [3 Abreviews](#) [2 References](#) [1 Image](#)

### Overview

---

<b>Product name</b>	Anti-RPL22 antibody
<b>Description</b>	Rabbit polyclonal to RPL22
<b>Host species</b>	Rabbit
<b>Tested applications</b>	<b>Suitable for:</b> WB
<b>Species reactivity</b>	<b>Reacts with:</b> Human <b>Predicted to work with:</b> Mouse, Rat, Horse, Chicken, Pig, Zebrafish, Cynomolgus monkey



**Immunogen** Synthetic peptide corresponding to Human RPL22 aa 100 to the C-terminus conjugated to keyhole limpet haemocyanin.  
(Peptide available as [ab87822](#))

**Positive control** This antibody gave a positive signal in the following whole cell lysates: HepG2; HeLa; HEK293; Jurkat.

**General notes** The Life Science industry has been in the grips of a reproducibility crisis for a number of years. Abcam is leading the way in addressing this with our range of recombinant monoclonal antibodies and knockout edited cell lines for gold-standard validation. Please check that this product meets your needs before purchasing.

If you have any questions, special requirements or concerns, please send us an inquiry and/or contact our Support team ahead of purchase. Recommended alternatives for this product can be found below, along with publications, customer reviews and Q&As

### Properties

---

<b>Form</b>	Liquid
<b>Storage instructions</b>	Shipped at 4°C. Store at +4°C short term (1-2 weeks). Upon delivery aliquot. Store at -20°C or -80°C. Avoid freeze / thaw cycle.
<b>Storage buffer</b>	pH: 7.40 Preservative: 0.02% Sodium azide Constituent: PBS

Batches of this product that have a concentration < 1mg/ml may have BSA added as a stabilising agent. If you would like information about the formulation of a specific lot, please contact our scientific support team who will be happy to help.

<b>Purity</b>	Immunogen affinity purified
<b>Clonality</b>	Polyclonal
<b>Isotype</b>	IgG

## Applications

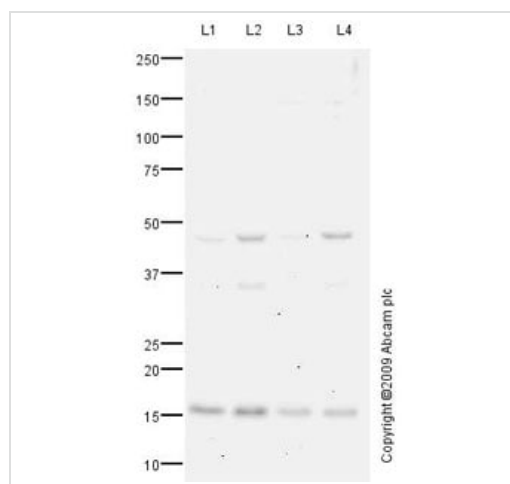
**The Abpromise guarantee** Our **Abpromise guarantee** covers the use of ab77720 in the following tested applications. The application notes include recommended starting dilutions; optimal dilutions/concentrations should be determined by the end user.

Application	Abreviews	Notes
<b>WB</b>	★ ★ ★ ★ ★ (3)	Use a concentration of 1 µg/ml. Detects a band of approximately 15 kDa (predicted molecular weight: 15 kDa).

## Target

**Sequence similarities** Belongs to the ribosomal protein L22e family.

## Images



Western blot - Anti-RPL22 antibody (ab77720)

**All lanes** : Anti-RPL22 antibody (ab77720) at 1 µg/ml

**Lane 1** : HepG2 (Human hepatocellular liver carcinoma cell line) Whole Cell Lysate

**Lane 2** : HeLa (Human epithelial carcinoma cell line) Whole Cell Lysate

**Lane 3** : HEK293 (Human embryonic kidney cell line) Whole Cell Lysate

**Lane 4** : Jurkat (Human T cell lymphoblast-like cell line) Whole Cell Lysate

Lysates/proteins at 10 µg per lane.

### Secondary

**All lanes** : Goat polyclonal to Rabbit IgG - H&L - Pre-Adsorbed (HRP) at 1/3000 dilution

Developed using the ECL technique.

Performed under reducing conditions.

**Predicted band size:** 15 kDa

**Observed band size:** 15 kDa

**Additional bands at:** 47 kDa. We are unsure as to the identity of these extra bands.

**Please note:** All products are "FOR RESEARCH USE ONLY. NOT FOR USE IN DIAGNOSTIC PROCEDURES"

### **Our Abpromise to you: Quality guaranteed and expert technical support**

---

- Replacement or refund for products not performing as stated on the datasheet
- Valid for 12 months from date of delivery
- Response to your inquiry within 24 hours
  
- We provide support in Chinese, English, French, German, Japanese and Spanish
- Extensive multi-media technical resources to help you
- We investigate all quality concerns to ensure our products perform to the highest standards

If the product does not perform as described on this datasheet, we will offer a refund or replacement. For full details of the Abpromise, please visit <https://www.abcam.com/abpromise> or contact our technical team.

### **Terms and conditions**

---

- Guarantee only valid for products bought direct from Abcam or one of our authorized distributors