




Product datasheet

Anti-RPL23A antibody ab223089

3 Images

Overview

Product name	Anti-RPL23A antibody
Description	Rabbit polyclonal to RPL23A
Host species	Rabbit
Tested applications	Suitable for: WB, IHC-P, ICC/IF
Species reactivity	Reacts with: Rat, Human Predicted to work with: Mouse, Cow 
Immunogen	Recombinant fragment corresponding to Human RPL23A aa 1-100. Database link: P62750  Run BLAST with  Run BLAST with
Positive control	WB: Rat brain lysate. IHC-P: Human testis tissue. ICC: A549 cells.
General notes	<p>The Life Science industry has been in the grips of a reproducibility crisis for a number of years. Abcam is leading the way in addressing this with our range of recombinant monoclonal antibodies and knockout edited cell lines for gold-standard validation. Please check that this product meets your needs before purchasing.</p> <p>If you have any questions, special requirements or concerns, please send us an inquiry and/or contact our Support team ahead of purchase. Recommended alternatives for this product can be found below, along with publications, customer reviews and Q&As</p>

Properties

Form	Liquid
Storage instructions	Shipped at 4°C. Store at +4°C short term (1-2 weeks). Upon delivery aliquot. Store at -20°C long term. Avoid freeze / thaw cycle.
Storage buffer	pH: 7.40 Preservative: 0.03% Proclin 300 Constituents: 50% Glycerol (glycerin, glycerine), PBS
Purity	Protein G purified
Purification notes	Purity >95%.
Clonality	Polyclonal
Isotype	IgG

Applications

The Abpromise guarantee

Our **Abpromise guarantee** covers the use of ab223089 in the following tested applications.

The application notes include recommended starting dilutions; optimal dilutions/concentrations should be determined by the end user.

Application	Abreviews	Notes
WB		1/500 - 1/5000. Detects a band of approximately 18 kDa (predicted molecular weight: 18 kDa).
IHC-P		1/20 - 1/200.
ICC/IF		1/50 - 1/200.

Target

Function

This protein binds to a specific region on the 26S rRNA.

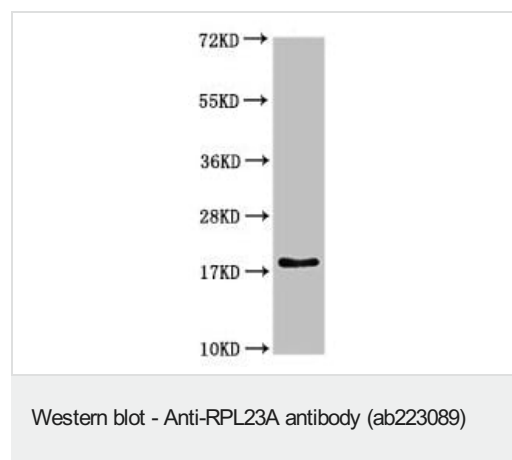
Sequence similarities

Belongs to the ribosomal protein L23P family.

Post-translational modifications

N-terminus is methylated by METTL11A/NTM1.

Images



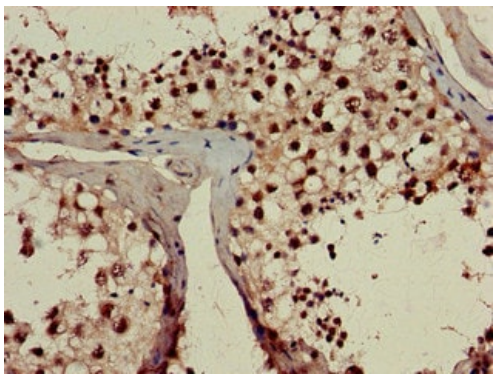
Anti-RPL23A antibody (ab223089) at 1/500 dilution + Rat brain lysate

Secondary

Goat polyclonal to rabbit IgG at 1/50000 dilution

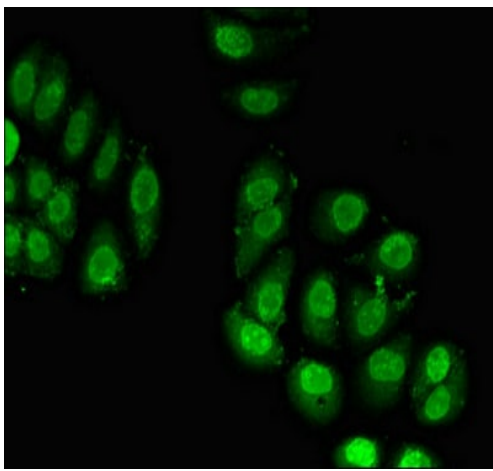
Predicted band size: 18 kDa

Observed band size: 18 kDa



Immunohistochemistry (Formalin/PFA-fixed paraffin-embedded sections) - Anti-RPL23A antibody (ab223089)

Paraffin-embedded human testis tissue stained for RPL23A using ab223089 at 1/100 dilution in immunohistochemical analysis.



Immunocytochemistry/ Immunofluorescence - Anti-RPL23A antibody (ab223089)

A549 (human lung carcinoma cell line) cells stained for RPL23A (green) using ab223089 at 1/100 dilution in ICC/IF, followed by Alexa Fluor 488[®] conjugated Goat Anti-Rabbit IgG (H+L).

Please note: All products are "FOR RESEARCH USE ONLY. NOT FOR USE IN DIAGNOSTIC PROCEDURES"

Our Abpromise to you: Quality guaranteed and expert technical support

- Replacement or refund for products not performing as stated on the datasheet
- Valid for 12 months from date of delivery
- Response to your inquiry within 24 hours
- We provide support in Chinese, English, French, German, Japanese and Spanish
- Extensive multi-media technical resources to help you
- We investigate all quality concerns to ensure our products perform to the highest standards

If the product does not perform as described on this datasheet, we will offer a refund or replacement. For full details of the Abpromise, please visit <https://www.abcam.com/abpromise> or contact our technical team.

Terms and conditions

-
- Guarantee only valid for products bought direct from Abcam or one of our authorized distributors