


Product datasheet

Anti-RPL26 antibody ab59567

★★★★☆ [3 Abreviews](#) [27 References](#) [2 Images](#)

Overview

Product name	Anti-RPL26 antibody
Description	Rabbit polyclonal to RPL26
Host species	Rabbit
Tested applications	Suitable for: ICC/IF, WB
Species reactivity	Reacts with: Mouse, Rat, Human Predicted to work with: Cow, Xenopus laevis, Cynomolgus monkey 
Immunogen	Synthetic peptide corresponding to Human RPL26 aa 1-17 (N terminal) conjugated to keyhole limpet haemocyanin (Cysteine residue). Sequence: MKFNPFVTSDRSKNRKR

 [Run BLAST with](#)

 [Run BLAST with](#)

General notes

The Life Science industry has been in the grips of a reproducibility crisis for a number of years. Abcam is leading the way in addressing this with our range of recombinant monoclonal antibodies and knockout edited cell lines for gold-standard validation. Please check that this product meets your needs before purchasing.

If you have any questions, special requirements or concerns, please send us an inquiry and/or contact our Support team ahead of purchase. Recommended alternatives for this product can be found below, along with publications, customer reviews and Q&As

Properties

Form	Liquid
Storage instructions	Shipped at 4°C. Store at +4°C short term (1-2 weeks). Upon delivery aliquot. Store at -20°C or -80°C. Avoid freeze / thaw cycle.
Storage buffer	pH: 7.40 Preservative: 0.097% Sodium azide Constituent: 0.0268% PBS
Purity	Immunogen affinity purified
Clonality	Polyclonal
Isotype	IgG

Applications

The Abpromise guarantee

Our **Abpromise guarantee** covers the use of ab59567 in the following tested applications.

The application notes include recommended starting dilutions; optimal dilutions/concentrations should be determined by the end user.

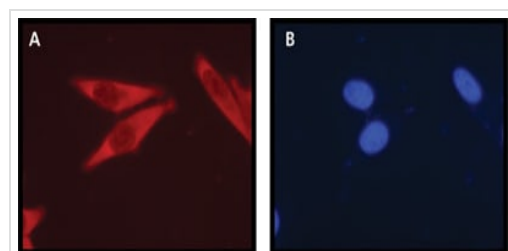
Application	Abreviews	Notes
ICC/IF	★☆☆☆☆ (1)	Use a concentration of 5 - 10 µg/ml.
WB	★★★★★ (2)	Use a concentration of 0.5 - 1 µg/ml. Detects a band of approximately 17 kDa (predicted molecular weight: 17 kDa). Staining of the ribosomal protein L26 band in immunoblotting is specifically inhibited by the immunizing peptide.

Target

Sequence similarities

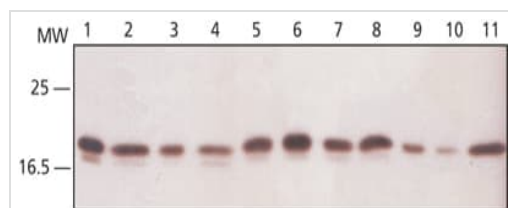
Belongs to the ribosomal protein L24P family.

Images



Immunocytochemistry/ Immunofluorescence - Anti-RPL26 antibody (ab59567)

Cytoplasmic localization of RPL26 in HeLa cells stained with ab59567 at a 5µg/mL concentration (A), and DAPI (B). The antibody was developed with Goat Anti-Rabbit IgG, Cy3 conjugated.



Western blot - Anti-RPL26 antibody (ab59567)

All lanes : Anti-RPL26 antibody (ab59567) at 0.25 µg/ml

Lane 1 : 293T

Lane 2 : HeLa

Lane 3 : U2OS

Lane 4 : MCF7

Lane 5 : K562

Lane 6 : A431

Lane 7 : Jurkat

Lane 8 : HepG2

Lane 9 : NIH3T3

Lane 10 : PC12

Lane 11 : RAT1

Secondary

All lanes : Goat Anti-rabbit IgG, Peroxidase conjugate

Predicted band size: 17 kDa

Observed band size: 17 kDa

Please note: All products are "FOR RESEARCH USE ONLY. NOT FOR USE IN DIAGNOSTIC PROCEDURES"

Our Abpromise to you: Quality guaranteed and expert technical support

- Replacement or refund for products not performing as stated on the datasheet
- Valid for 12 months from date of delivery
- Response to your inquiry within 24 hours
- We provide support in Chinese, English, French, German, Japanese and Spanish
- Extensive multi-media technical resources to help you
- We investigate all quality concerns to ensure our products perform to the highest standards

If the product does not perform as described on this datasheet, we will offer a refund or replacement. For full details of the Abpromise, please visit <https://www.abcam.com/abpromise> or contact our technical team.

Terms and conditions

- Guarantee only valid for products bought direct from Abcam or one of our authorized distributors