




Product datasheet

Anti-RPL28 antibody ab193164

[1 References](#) [3 Images](#)

Overview

Product name	Anti-RPL28 antibody
Description	Rabbit polyclonal to RPL28
Host species	Rabbit
Tested applications	Suitable for: IHC-P, ICC
Species reactivity	Reacts with: Human Predicted to work with: Mouse, Rat, Cow 
Immunogen	Recombinant full length protein corresponding to Human RPL28 aa 1 to the C-terminus. Database link: P46779  Run BLAST with  Run BLAST with
Positive control	IHC-P: Human ovarian cancer and human pancreatic tissues. ICC: HepG2 cells
General notes	<p>The Life Science industry has been in the grips of a reproducibility crisis for a number of years. Abcam is leading the way in addressing this with our range of recombinant monoclonal antibodies and knockout edited cell lines for gold-standard validation. Please check that this product meets your needs before purchasing.</p> <p>If you have any questions, special requirements or concerns, please send us an inquiry and/or contact our Support team ahead of purchase. Recommended alternatives for this product can be found below, along with publications, customer reviews and Q&As</p>

Properties

Form	Liquid
Storage instructions	Shipped at 4°C. Store at +4°C short term (1-2 weeks). Upon delivery aliquot. Store at -20°C long term. Avoid freeze / thaw cycle.
Storage buffer	pH: 7.40 Constituents: 50% Glycerol (glycerin, glycerine), 49% PBS, 0.03% Proclin 300
Purity	Protein G purified
Purification notes	>95%
Clonality	Polyclonal
Isotype	IgG

Applications

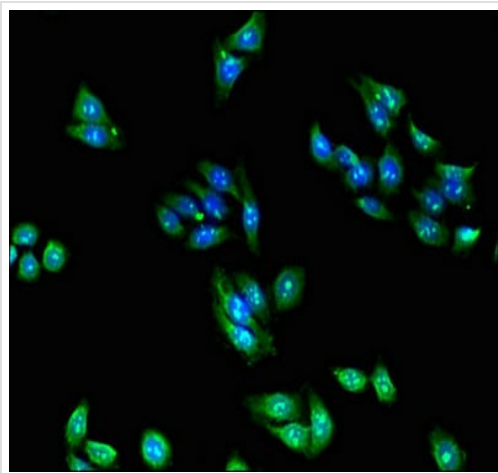
The Abpromise guarantee Our **Abpromise guarantee** covers the use of ab193164 in the following tested applications. The application notes include recommended starting dilutions; optimal dilutions/concentrations should be determined by the end user.

Application	Abreviews	Notes
IHC-P		1/20 - 1/200.
ICC		1/50 - 1/200.

Target

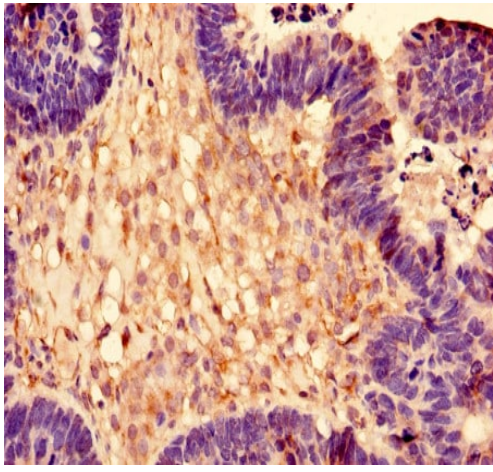
Sequence similarities Belongs to the ribosomal protein L28e family.

Images



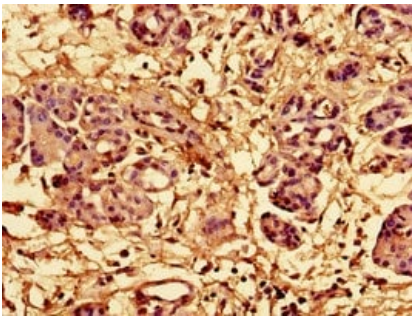
Immunocytochemistry analysis of HepG2 (Human liver hepatocellular carcinoma cell line) cells labeling RPL28 with ab193164 at dilution of 1/100.

Immunocytochemistry - Anti-RPL28 antibody
(ab193164)



Immunohistochemistry (Formalin/PFA-fixed paraffin-embedded sections) - Anti-RPL28 antibody (ab193164)

Immunohistochemistry (Formalin/PFA-fixed paraffin-embedded sections) analysis of human ovarian cancer tissue labeling RPL28 with ab193164 at 1/100 dilution.



Immunohistochemistry (Formalin/PFA-fixed paraffin-embedded sections) - Anti-RPL28 antibody (ab193164)

Immunohistochemistry (Formalin/PFA-fixed paraffin-embedded sections) analysis of human pancreatic tissue labeling RPL28 with ab193164 at a dilution of 1/100.

Please note: All products are "FOR RESEARCH USE ONLY. NOT FOR USE IN DIAGNOSTIC PROCEDURES"

Our Abpromise to you: Quality guaranteed and expert technical support

- Replacement or refund for products not performing as stated on the datasheet
- Valid for 12 months from date of delivery
- Response to your inquiry within 24 hours
- We provide support in Chinese, English, French, German, Japanese and Spanish
- Extensive multi-media technical resources to help you
- We investigate all quality concerns to ensure our products perform to the highest standards

If the product does not perform as described on this datasheet, we will offer a refund or replacement. For full details of the Abpromise, please visit <https://www.abcam.com/abpromise> or contact our technical team.

Terms and conditions

- Guarantee only valid for products bought direct from Abcam or one of our authorized distributors