

Anti-RPL29 antibody ab88514

[2 References](#) [2 Images](#)

Overview

Product name	Anti-RPL29 antibody
Description	Mouse polyclonal to RPL29
Host species	Mouse
Tested applications	Suitable for: WB, IHC-P
Species reactivity	Reacts with: Human
Immunogen	Recombinant full length protein within Human RPL29. The exact immunogen sequence used to generate this antibody is proprietary information. If additional detail on the immunogen is needed to determine the suitability of the antibody for your needs, please <u>contact</u> our Scientific Support team to discuss your requirements.
Positive control	Human pancreas tissue lysate. RPL29 transfected 293T cell lysate. Human salivary gland tissue. HeLa cells
General notes	<p>The Life Science industry has been in the grips of a reproducibility crisis for a number of years. Abcam is leading the way in addressing this with our range of recombinant monoclonal antibodies and knockout edited cell lines for gold-standard validation. Please check that this product meets your needs before purchasing.</p> <p>If you have any questions, special requirements or concerns, please send us an inquiry and/or contact our Support team ahead of purchase. Recommended alternatives for this product can be found below, along with publications, customer reviews and Q&As</p>

Properties

Form	Liquid
Storage instructions	Shipped at 4°C. Upon delivery aliquot and store at -20°C or -80°C. Avoid repeated freeze / thaw cycles.
Storage buffer	pH: 7.40 Constituent: 100% PBS
Purity	Protein A purified
Clonality	Polyclonal
Isotype	IgG

Applications

The Abpromise guarantee

Our **Abpromise guarantee** covers the use of ab88514 in the following tested applications.

The application notes include recommended starting dilutions; optimal dilutions/concentrations should be determined by the end user.

Application	Abreviews	Notes
WB		
IHC-P		

Application notes

ICC/IF: Use at a concentration of 10ug/ml.

IHC-P: Use at a concentration of 3 µg/ml.

WB: Use at a concentration of 1 µg/ml. Predicted molecular weight: 18 kDa.

Not yet tested in other applications.

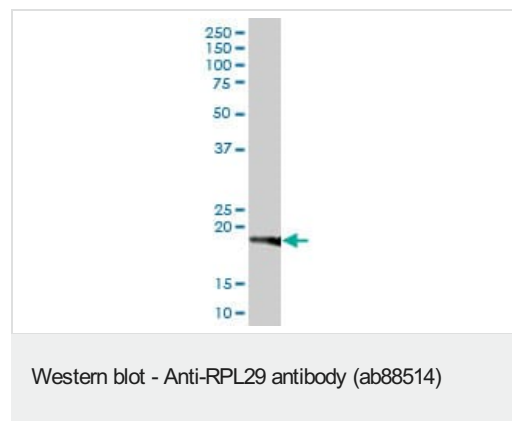
Optimal dilutions/concentrations should be determined by the end user.

Target

Sequence similarities

Belongs to the ribosomal protein L29e family.

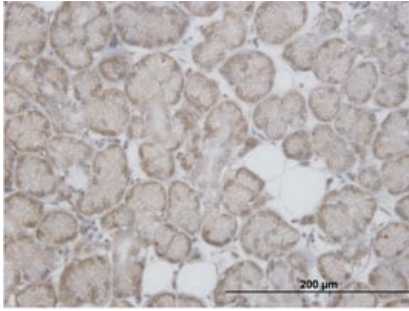
Images



Anti-RPL29 antibody (ab88514) at 1 µg/ml + Human pancreas tissue lysate at 50 µg

Predicted band size: 18 kDa

Observed band size: 18 kDa



ab88514, at 3 ug/ml, staining RPL29 in formalin-fixed paraffin-embedded Human salivary gland tissue by Immunohistochemistry.

Immunohistochemistry (Formalin/PFA-fixed paraffin-embedded sections) - Anti-RPL29 antibody (ab88514)

Please note: All products are "FOR RESEARCH USE ONLY. NOT FOR USE IN DIAGNOSTIC PROCEDURES"

Our Abpromise to you: Quality guaranteed and expert technical support

- Replacement or refund for products not performing as stated on the datasheet
- Valid for 12 months from date of delivery
- Response to your inquiry within 24 hours
- We provide support in Chinese, English, French, German, Japanese and Spanish
- Extensive multi-media technical resources to help you
- We investigate all quality concerns to ensure our products perform to the highest standards

If the product does not perform as described on this datasheet, we will offer a refund or replacement. For full details of the Abpromise, please visit <https://www.abcam.com/abpromise> or contact our technical team.

Terms and conditions

- Guarantee only valid for products bought direct from Abcam or one of our authorized distributors