


## Product datasheet

# Anti-RPL37 antibody ab228542

3 Images

### Overview

---

<b>Product name</b>	Anti-RPL37 antibody
<b>Description</b>	Rabbit polyclonal to RPL37
<b>Host species</b>	Rabbit
<b>Tested applications</b>	<b>Suitable for:</b> WB, ICC/IF
<b>Species reactivity</b>	<b>Reacts with:</b> Human <b>Predicted to work with:</b> Mouse, Rat, Chicken, Cow, Dog, Pig, Xenopus laevis, Chimpanzee 
<b>Immunogen</b>	Synthetic peptide within Human RPL37 (internal sequence). The exact sequence is proprietary. Conjugated to a carrier protein. Database link: <a href="#">P61927</a>
<b>Positive control</b>	WB: HEK-293T, HeLa, Jurkat, Raji and NCI-H929 whole cell lysate. ICC/IF: HeLa cells.
<b>General notes</b>	<p>The Life Science industry has been in the grips of a reproducibility crisis for a number of years. Abcam is leading the way in addressing this with our range of recombinant monoclonal antibodies and knockout edited cell lines for gold-standard validation. Please check that this product meets your needs before purchasing.</p> <p>If you have any questions, special requirements or concerns, please send us an inquiry and/or contact our Support team ahead of purchase. Recommended alternatives for this product can be found below, along with publications, customer reviews and Q&amp;As</p>

### Properties

---

<b>Form</b>	Liquid
<b>Storage instructions</b>	Shipped at 4°C. Store at +4°C short term (1-2 weeks). Upon delivery aliquot. Store at -20°C long term. Avoid freeze / thaw cycle.
<b>Storage buffer</b>	pH: 7.00 Preservative: 0.01% Thimerosal (merthiolate) Constituents: 78.99% PBS, 1% BSA, 20% Glycerol (glycerin, glycerine)
<b>Purity</b>	Immunogen affinity purified
<b>Clonality</b>	Polyclonal
<b>Isotype</b>	IgG

## Applications

**The Abpromise guarantee** Our **Abpromise guarantee** covers the use of ab228542 in the following tested applications. The application notes include recommended starting dilutions; optimal dilutions/concentrations should be determined by the end user.

Application	Abreviews	Notes
WB		1/500 - 1/3000. Predicted molecular weight: 11 kDa.
ICC/IF		1/100 - 1/1000.

## Target

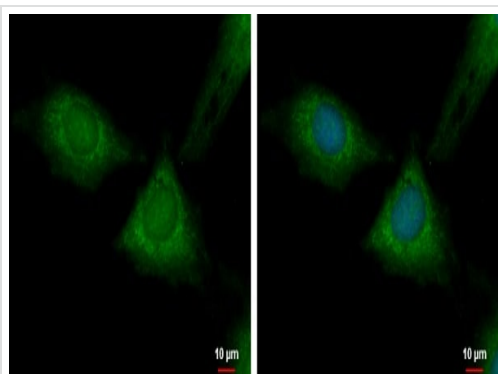
### Relevance

Ribosomes, the organelles that catalyze protein synthesis, consist of a small 40S subunit and a large 60S subunit. Together these subunits are composed of four RNA species and approximately 80 structurally distinct proteins. RPL37 is a ribosomal protein that is a component of the 60S subunit. The protein belongs to the L37E family of ribosomal proteins, is located in the cytoplasm, and contains a C2C2 type zinc finger like motif.

### Cellular localization

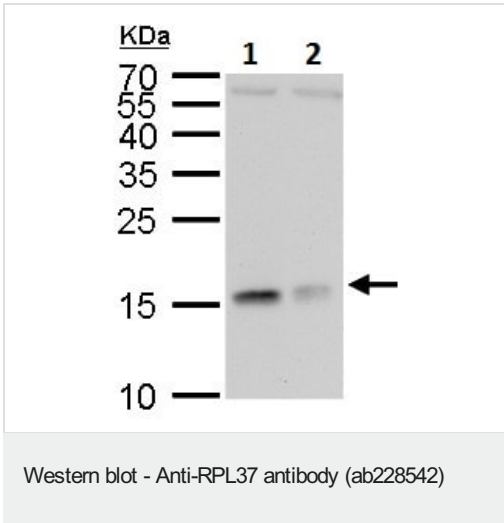
Cytoplasmic (ribosome)

## Images



HeLa (human epithelial cell line from cervix adenocarcinoma) cells stained for RPL37 (green) using ab228542 at 1/500 dilution in ICC/IF. Cells were fixed in 4% paraformaldehyde at RT for 15 minutes. Blue: Hoechst 33342.

Immunocytochemistry/ Immunofluorescence - Anti-RPL37 antibody (ab228542)



**All lanes :** Anti-RPL37 antibody (ab228542) at 1/1000 dilution

**Lane 1 :** HEK-293T (human epithelial cell line from embryonic kidney transformed with large T antigen) whole cell lysate

**Lane 2 :** HeLa (human epithelial cell line from cervix adenocarcinoma) whole cell lysate

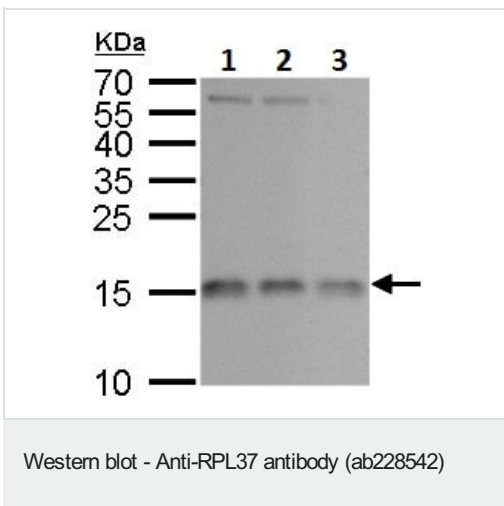
Lysates/proteins at 30 µg per lane.

Developed using the ECL technique.

Performed under reducing conditions.

**Predicted band size:** 11 kDa

15% SDS-PAGE



**All lanes :** Anti-RPL37 antibody (ab228542) at 1/1000 dilution

**Lane 1 :** Jurkat (human T cell leukemia cell line from peripheral blood) whole cell lysate

**Lane 2 :** Raji (human Burkitt's lymphoma cell line) whole cell lysate

**Lane 3 :** NCI-H929 whole cell lysate

Lysates/proteins at 30 µg per lane.

Developed using the ECL technique.

Performed under reducing conditions.

**Predicted band size:** 11 kDa

15% SDS-PAGE

**Please note:** All products are "FOR RESEARCH USE ONLY. NOT FOR USE IN DIAGNOSTIC PROCEDURES"

**Our Abpromise to you: Quality guaranteed and expert technical support**

- Replacement or refund for products not performing as stated on the datasheet

- Valid for 12 months from date of delivery
- Response to your inquiry within 24 hours
  
- We provide support in Chinese, English, French, German, Japanese and Spanish
- Extensive multi-media technical resources to help you
- We investigate all quality concerns to ensure our products perform to the highest standards

If the product does not perform as described on this datasheet, we will offer a refund or replacement. For full details of the Abpromise, please visit <https://www.abcam.com/abpromise> or contact our technical team.

### **Terms and conditions**

---

- Guarantee only valid for products bought direct from Abcam or one of our authorized distributors