


Product datasheet

Anti-RPL7A antibody [EPR12310] ab172478

Recombinant **RabMAb**

[1 References](#) [5 Images](#)

Overview

Product name	Anti-RPL7A antibody [EPR12310]
Description	Rabbit monoclonal [EPR12310] to RPL7A
Host species	Rabbit
Tested applications	Suitable for: WB, IHC-P Unsuitable for: Flow Cyt, ICC/IF or IP
Species reactivity	Reacts with: Mouse, Human Predicted to work with: Rat 
Immunogen	Recombinant fragment within Human RPL7A aa 1-200. The exact sequence is proprietary. Database link: P62424
Positive control	HeLa, MCF7, 293T, Jurkat, Raw 264.7 and NIH/3T3 cell lysate; Human brain, hepatocellular carcinoma and uterus tissues.
General notes	This product is a recombinant monoclonal antibody, which offers several advantages including: <ul style="list-style-type: none"> - High batch-to-batch consistency and reproducibility - Improved sensitivity and specificity - Long-term security of supply - Animal-free production For more information see here . Our RabMAb [®] technology is a patented hybridoma-based technology for making rabbit monoclonal antibodies. For details on our patents, please refer to RabMAb[®] patents .

Properties

Form	Liquid
Storage instructions	Shipped at 4°C. Store at +4°C short term (1-2 weeks). Upon delivery aliquot. Store at -20°C long term. Avoid freeze / thaw cycle.
Storage buffer	pH: 7.20 Preservative: 0.01% Sodium azide Constituents: 9% PBS, 40% Glycerol (glycerin, glycerine), 0.05% BSA, 50% Tissue culture supernatant
Purity	Protein A purified

Clonality	Monoclonal
Clone number	EPR12310
Isotype	IgG

Applications

The Abpromise guarantee Our **Abpromise guarantee** covers the use of ab172478 in the following tested applications. The application notes include recommended starting dilutions; optimal dilutions/concentrations should be determined by the end user.

Application	Abreviews	Notes
WB		1/10000 - 1/50000. Predicted molecular weight: 30 kDa.
IHC-P		1/50 - 1/100. Perform heat mediated antigen retrieval with citrate buffer pH 6 before commencing with IHC staining protocol.

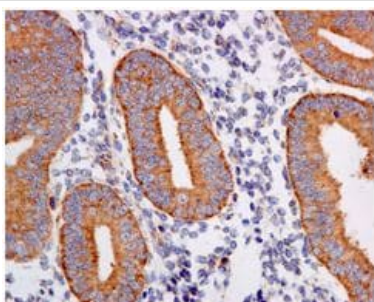
Application notes Is unsuitable for Flow Cyt, ICC/IF or IP.

Target

Involvement in disease Note=Chromosomal recombination involving RPL7A activates the receptor kinase domain of the TRK oncogene.

Sequence similarities Belongs to the ribosomal protein L7Ae family.

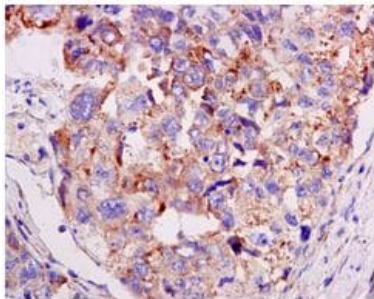
Images



Immunohistochemical analysis of paraffin embedded Human uterus tissue labeling RPL7A with ab172478 at 1/50 dilution.

Perform heat mediated antigen retrieval with citrate buffer pH 6 before commencing with IHC staining protocol.

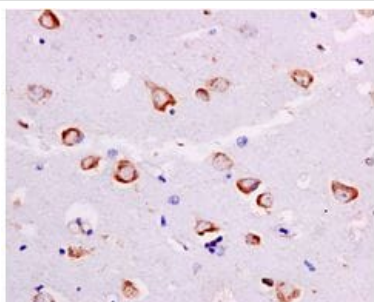
Immunohistochemistry (Formalin/PFA-fixed paraffin-embedded sections) - Anti-RPL7A antibody [EPR12310] (ab172478)



Immunohistochemistry (Formalin/PFA-fixed paraffin-embedded sections) - Anti-RPL7A antibody [EPR12310] (ab172478)

Immunohistochemical analysis of paraffin embedded Human hepatocellular carcinoma tissue labeling RPL7A with ab172478 at 1/50 dilution.

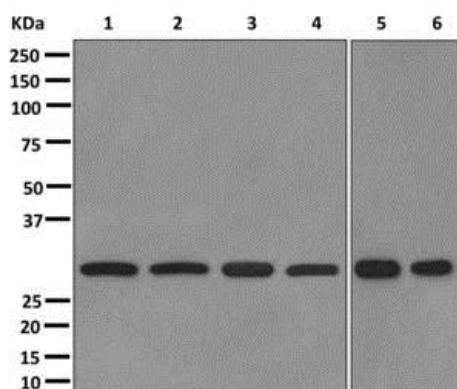
Perform heat mediated antigen retrieval with citrate buffer pH 6 before commencing with IHC staining protocol.



Immunohistochemistry (Formalin/PFA-fixed paraffin-embedded sections) - Anti-RPL7A antibody [EPR12310] (ab172478)

Immunohistochemical analysis of paraffin embedded Human brain tissue labeling RPL7A with ab172478 at 1/50 dilution.

Perform heat mediated antigen retrieval with citrate buffer pH 6 before commencing with IHC staining protocol.



Western blot - Anti-RPL7A antibody [EPR12310] (ab172478)

All lanes : Anti-RPL7A antibody [EPR12310] (ab172478) at 1/10000 dilution

Lane 1 : HeLa cell lysate

Lane 2 : MCF7 cell lysate

Lane 3 : 293T cell lysate

Lane 4 : Jurkat cell lysate

Lane 5 : Raw 264.7 cell lysate

Lane 6 : NIH/3T3 cell lysate

Lysates/proteins at 10 µg per lane.

Predicted band size: 30 kDa

Why choose a recombinant antibody?



Research with confidence
Consistent and reproducible results



Long-term and scalable supply
Recombinant technology



Success from the first experiment
Confirmed specificity



Ethical standards compliant
Animal-free production

Anti-RPL7A antibody [EPR12310] (ab172478)

Please note: All products are "FOR RESEARCH USE ONLY. NOT FOR USE IN DIAGNOSTIC PROCEDURES"

Our Abpromise to you: Quality guaranteed and expert technical support

- Replacement or refund for products not performing as stated on the datasheet
- Valid for 12 months from date of delivery
- Response to your inquiry within 24 hours
- We provide support in Chinese, English, French, German, Japanese and Spanish
- Extensive multi-media technical resources to help you
- We investigate all quality concerns to ensure our products perform to the highest standards

If the product does not perform as described on this datasheet, we will offer a refund or replacement. For full details of the Abpromise, please visit <https://www.abcam.com/abpromise> or contact our technical team.

Terms and conditions

- Guarantee only valid for products bought direct from Abcam or one of our authorized distributors