


## Product datasheet

# Anti-RPRD2 antibody ab10373

1 Image

### Overview

---

<b>Product name</b>	Anti-RPRD2 antibody
<b>Description</b>	Goat polyclonal to RPRD2
<b>Host species</b>	Goat
<b>Tested applications</b>	<b>Suitable for:</b> WB
<b>Species reactivity</b>	<b>Reacts with:</b> Human <b>Predicted to work with:</b> Mouse, Rabbit, Cow, Pig, Rhesus monkey, Gorilla, Orangutan, Elephant 
<b>Immunogen</b>	Synthetic peptide corresponding to Human RPRD2. (LocusLink ID 23248)
<b>Positive control</b>	Whole cell lysate from HeLa cells.
<b>General notes</b>	<p>The Life Science industry has been in the grips of a reproducibility crisis for a number of years. Abcam is leading the way in addressing this with our range of recombinant monoclonal antibodies and knockout edited cell lines for gold-standard validation. Please check that this product meets your needs before purchasing.</p> <p>If you have any questions, special requirements or concerns, please send us an inquiry and/or contact our Support team ahead of purchase. Recommended alternatives for this product can be found below, along with publications, customer reviews and Q&amp;As</p>

### Properties

---

<b>Form</b>	Liquid
<b>Storage instructions</b>	Shipped at 4°C. Upon delivery aliquot and store at -20°C. Avoid freeze / thaw cycles.
<b>Storage buffer</b>	Preservative: 0.1% Sodium azide Constituents: 0.021% PBS, 1.764% Sodium citrate, 1.815% Tris
<b>Purity</b>	Immunogen affinity purified
<b>Clonality</b>	Polyclonal
<b>Isotype</b>	IgG

### Applications

---

The **Abpromise guarantee** Our **Abpromise guarantee** covers the use of ab10373 in the following tested applications.

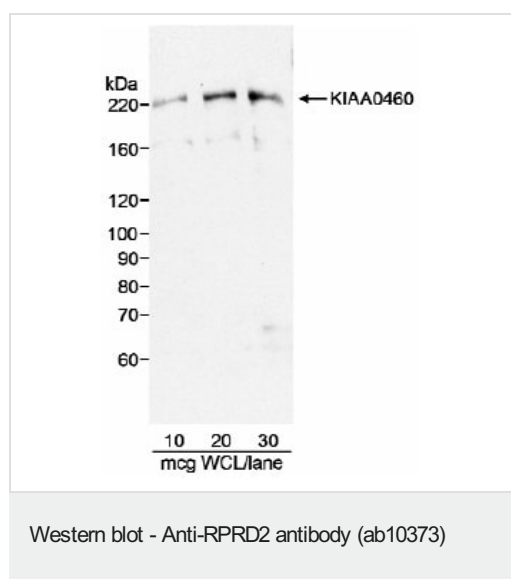
The application notes include recommended starting dilutions; optimal dilutions/concentrations should be determined by the end user.

Application	Abreviews	Notes
WB		Use at an assay dependent concentration. Detects a band of approximately 220 kDa (predicted molecular weight: 160 kDa).

## Target

**Sequence similarities** Contains 1 CID domain.

## Images



ab10373 detection of human RPRD2 by Western blot. *Samples:*

Whole cell lysate (WCL; amounts indicated) from HeLa cells.

*Antibody:* ab10373 used at 1 µg/ml. *Detection:*

Chemiluminescence with 3 minute exposure.

ab10373 detection of human RPRD2 by Western blot. *Samples:*

Whole cell lysate (WCL; amounts indicated) from HeLa cells.

*Antibody:* ab10373 used at 1 µg/ml. *Detection:* Chemiluminescence with 3 minute exposure.

**Please note:** All products are "FOR RESEARCH USE ONLY. NOT FOR USE IN DIAGNOSTIC PROCEDURES"

## Our Abpromise to you: Quality guaranteed and expert technical support

- Replacement or refund for products not performing as stated on the datasheet
- Valid for 12 months from date of delivery
- Response to your inquiry within 24 hours
- We provide support in Chinese, English, French, German, Japanese and Spanish
- Extensive multi-media technical resources to help you
- We investigate all quality concerns to ensure our products perform to the highest standards

If the product does not perform as described on this datasheet, we will offer a refund or replacement. For full details of the Abpromise, please visit <https://www.abcam.com/abpromise> or contact our technical team.

## Terms and conditions

- Guarantee only valid for products bought direct from Abcam or one of our authorized distributors