


Product datasheet

Anti-RPS15 antibody [EPR11105] ab168361

Recombinant RabMAb

3 Images

Overview

Product name	Anti-RPS15 antibody [EPR11105]
Description	Rabbit monoclonal [EPR11105] to RPS15
Host species	Rabbit
Tested applications	Suitable for: WB, ICC/IF Unsuitable for: Flow Cyt, IHC-P or IP
Species reactivity	Reacts with: Human Predicted to work with: Mouse, Rat 
Immunogen	Synthetic peptide corresponding to Human RPS15.
Positive control	MCF7, HepG2, A549, and U-87 MG cell lysates; HepG2 cells.
General notes	<p>This product is a recombinant monoclonal antibody, which offers several advantages including:</p> <ul style="list-style-type: none">- High batch-to-batch consistency and reproducibility- Improved sensitivity and specificity- Long-term security of supply- Animal-free production <p>For more information see here.</p> <p>Our RabMAb[®] technology is a patented hybridoma-based technology for making rabbit monoclonal antibodies. For details on our patents, please refer to RabMAb[®] patents.</p>

Properties

Form	Liquid
Storage instructions	Shipped at 4°C. Store at +4°C short term (1-2 weeks). Upon delivery aliquot. Store at -20°C long term.
Storage buffer	pH: 7.2 Preservative: 0.01% Sodium azide Constituents: 9% PBS, 40% Glycerol (glycerin, glycerine), 0.05% BSA, 50% Tissue culture supernatant
Purity	Tissue culture supernatant
Clonality	Monoclonal

Clone number EPR11105

Isotype IgG

Applications

The Abpromise guarantee Our **Abpromise guarantee** covers the use of ab168361 in the following tested applications.

The application notes include recommended starting dilutions; optimal dilutions/concentrations should be determined by the end user.

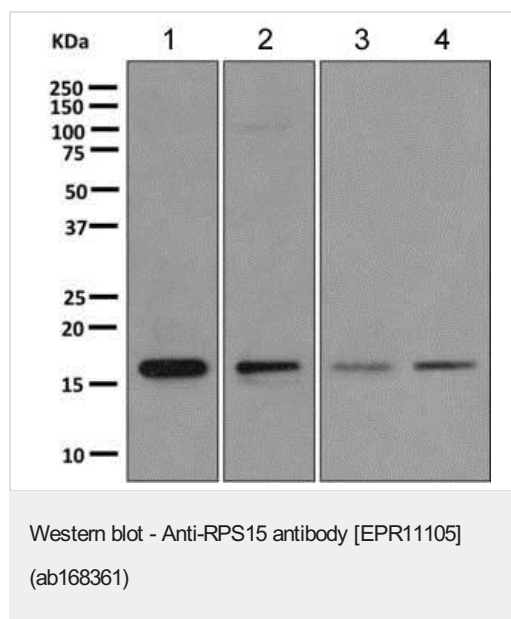
Application	Abreviews	Notes
WB		1/1000 - 1/5000. Predicted molecular weight: 17 kDa.
ICC/IF		1/100 - 1/250.

Application notes Is unsuitable for Flow Cyt, IHC-P or IP.

Target

Sequence similarities Belongs to the ribosomal protein S19P family.

Images



All lanes : Anti-RPS15 antibody [EPR11105] (ab168361) at 1/1000 dilution

Lane 1 : MCF7 cell lysate

Lane 2 : HepG2 cell lysate

Lane 3 : A549 cell lysate

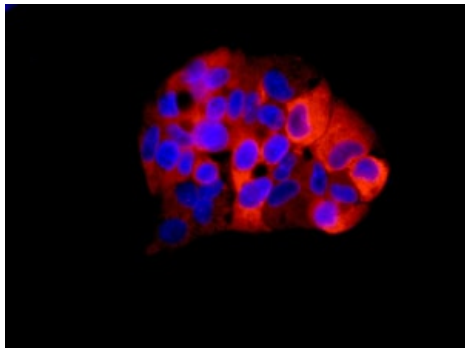
Lane 4 : U-87 MG cell lysate

Lysates/proteins at 10 µg per lane.

Secondary

All lanes : Goat anti-rabbit HRP at 1/2000 dilution

Predicted band size: 17 kDa



Immunofluorescent analysis of HepG2 cells labeling RPS15 with ab168361 at 1/100 dilution.

Immunocytochemistry/ Immunofluorescence - Anti-RPS15 antibody [EPR11105] (ab168361)

Why choose a recombinant antibody?



Research with confidence
Consistent and reproducible results



Long-term and scalable supply
Recombinant technology



Success from the first experiment
Confirmed specificity



Ethical standards compliant
Animal-free production

Anti-RPS15 antibody [EPR11105] (ab168361)

Please note: All products are "FOR RESEARCH USE ONLY. NOT FOR USE IN DIAGNOSTIC PROCEDURES"

Our Abpromise to you: Quality guaranteed and expert technical support

- Replacement or refund for products not performing as stated on the datasheet
- Valid for 12 months from date of delivery
- Response to your inquiry within 24 hours
- We provide support in Chinese, English, French, German, Japanese and Spanish
- Extensive multi-media technical resources to help you
- We investigate all quality concerns to ensure our products perform to the highest standards

If the product does not perform as described on this datasheet, we will offer a refund or replacement. For full details of the Abpromise, please visit <https://www.abcam.com/abpromise> or contact our technical team.

Terms and conditions

- Guarantee only valid for products bought direct from Abcam or one of our authorized distributors