


# Anti-RPS3 antibody ab140688

[3 References](#) [3 Images](#)

### Overview

---

<b>Product name</b>	Anti-RPS3 antibody
<b>Description</b>	Rabbit polyclonal to RPS3
<b>Host species</b>	Rabbit
<b>Tested applications</b>	<b>Suitable for:</b> WB, IP, IHC-P
<b>Species reactivity</b>	<b>Reacts with:</b> Human <b>Predicted to work with:</b> Mouse, Rat, Rabbit, Horse, Guinea pig, Cow, Dog, Pig, Xenopus laevis, Rhesus monkey, Gorilla, Corn, Salamander, Chinese hamster, Orangutan, African bush elephant, Spotted catshark 
<b>Immunogen</b>	Synthetic peptide corresponding to Human RPS3 aa 150-250. Database link: <a href="#">P23396</a>
<b>Positive control</b>	WB: 293T, HeLa and Jurkat whole cell lysate ( <a href="#">ab7899</a> ). IP: 293T whole cell lysate. IHC-P: Human ovarian carcinoma tissue.
<b>General notes</b>	<p>The Life Science industry has been in the grips of a reproducibility crisis for a number of years. Abcam is leading the way in addressing this with our range of recombinant monoclonal antibodies and knockout edited cell lines for gold-standard validation. Please check that this product meets your needs before purchasing.</p> <p>If you have any questions, special requirements or concerns, please send us an inquiry and/or contact our Support team ahead of purchase. Recommended alternatives for this product can be found below, along with publications, customer reviews and Q&amp;As</p>

### Properties

---

<b>Form</b>	Liquid
<b>Storage instructions</b>	Shipped at 4°C. Store at +4°C.
<b>Storage buffer</b>	pH: 7 Preservative: 0.09% Sodium azide Constituent: 99% Tris citrate/phosphate
<b>Purity</b>	pH 7-8 Immunogen affinity purified
<b>Clonality</b>	Polyclonal

Isotype

IgG

## Applications

### The Abpromise guarantee

Our **Abpromise guarantee** covers the use of ab140688 in the following tested applications.

The application notes include recommended starting dilutions; optimal dilutions/concentrations should be determined by the end user.

Application	Abreviews	Notes
WB		1/2000 - 1/10000. Predicted molecular weight: 27 kDa.
IP		Use at 2-10 µg/mg of lysate.
IHC-P		1/1000.

## Target

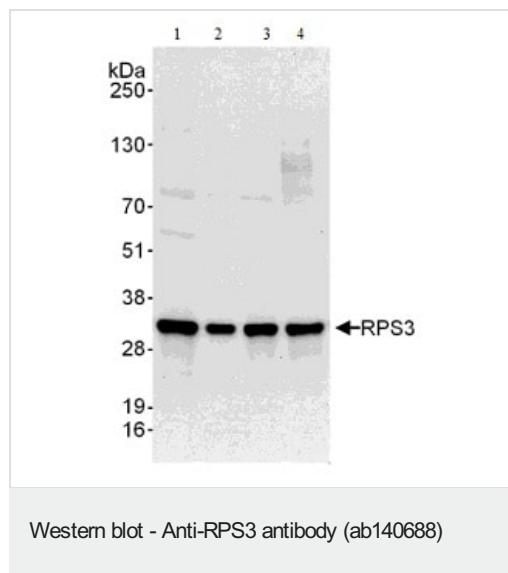
### Sequence similarities

Belongs to the ribosomal protein S3P family.  
Contains 1 KH type-2 domain.

### Cellular localization

Cytoplasm. Localized in cytoplasmic mRNP granules containing untranslated mRNAs.

## Images



**All lanes :** Anti-RPS3 antibody (ab140688) at 0.1 µg/ml

**Lane 1 :** 293T whole cell lysate at 50 µg

**Lane 2 :** 293T whole cell lysate at 15 µg

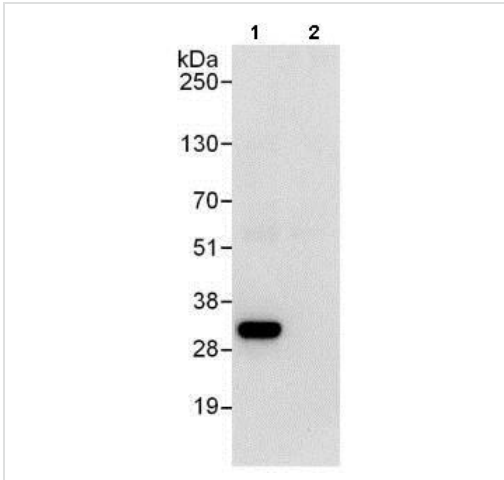
**Lane 3 :** HeLa whole cell lysate at 50 µg

**Lane 4 :** Jurkat whole cell lysate at 50 µg

Developed using the ECL technique.

**Predicted band size:** 27 kDa

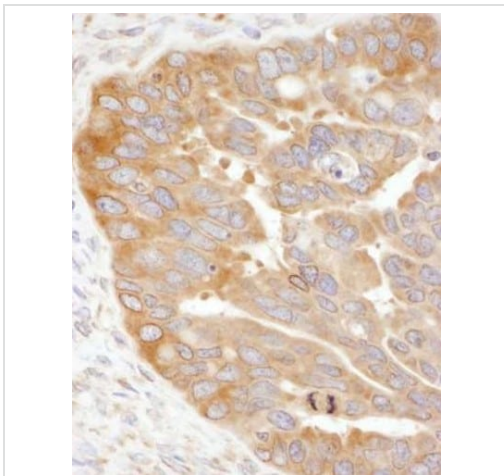
**Exposure time:** 10 seconds



Immunoprecipitation - Anti-RPS3 antibody  
(ab140688)

Detection of RPS3 in Immunoprecipitates of 293T whole cell lysate (1 mg for IP, 20% of IP loaded) using ab140688 at 6 µg/mg lysate for IP (Lane 1) and at 0.4 µg/ml for subsequent Western blot detection. Lane 2 represents control IgG IP.

Detection: Chemiluminescence with an exposure time of 10 seconds.



Immunohistochemistry (Formalin/PFA-fixed paraffin-embedded sections) - Anti-RPS3 antibody  
(ab140688)

Immunohistochemical (Formalin/PFA-fixed paraffin-embedded sections) analysis of human ovarian carcinoma tissue sections using **ab117809** at 1/1000 dilution.

**Please note:** All products are "FOR RESEARCH USE ONLY. NOT FOR USE IN DIAGNOSTIC PROCEDURES"

#### Our Abpromise to you: Quality guaranteed and expert technical support

- Replacement or refund for products not performing as stated on the datasheet
- Valid for 12 months from date of delivery

- Response to your inquiry within 24 hours
- We provide support in Chinese, English, French, German, Japanese and Spanish
- Extensive multi-media technical resources to help you
- We investigate all quality concerns to ensure our products perform to the highest standards

If the product does not perform as described on this datasheet, we will offer a refund or replacement. For full details of the Abpromise, please visit <https://www.abcam.com/abpromise> or contact our technical team.

### **Terms and conditions**

---

- Guarantee only valid for products bought direct from Abcam or one of our authorized distributors