


## Product datasheet

# Anti-RPS6 antibody - Ribosome Marker ab70227

★★★★★ [2 Abreviews](#) [10 References](#) [3 Images](#)

### Overview

<b>Product name</b>	Anti-RPS6 antibody - Ribosome Marker
<b>Description</b>	Rabbit polyclonal to RPS6 - Ribosome Marker
<b>Host species</b>	Rabbit
<b>Tested applications</b>	<b>Suitable for:</b> WB, IP
<b>Species reactivity</b>	<b>Reacts with:</b> Mouse, Human <b>Predicted to work with:</b> Rat, Sheep, Rabbit, Goat, Horse, Chicken, Guinea pig, Cow, Dog, Turkey, Pig, Chimpanzee, Reptile, Rhesus monkey, Gorilla, Orangutan 
<b>Immunogen</b>	Synthetic peptide corresponding to a region between residues 100 and 150 of human RPS6. (NP_001001.2).
<b>General notes</b>	<p>The Life Science industry has been in the grips of a reproducibility crisis for a number of years. Abcam is leading the way in addressing this with our range of recombinant monoclonal antibodies and knockout edited cell lines for gold-standard validation. Please check that this product meets your needs before purchasing.</p> <p>If you have any questions, special requirements or concerns, please send us an inquiry and/or contact our Support team ahead of purchase. Recommended alternatives for this product can be found below, along with publications, customer reviews and Q&amp;As</p>

### Properties

<b>Form</b>	Liquid
<b>Storage instructions</b>	Shipped at 4°C. Upon delivery aliquot and store at -20°C. Avoid freeze / thaw cycles.
<b>Storage buffer</b>	pH: 6.8 Preservative: 0.09% Sodium azide Constituents: 0.1% BSA, Tris buffered saline
<b>Purity</b>	Immunogen affinity purified
<b>Clonality</b>	Polyclonal
<b>Isotype</b>	IgG

### Applications

## The Abpromise guarantee

Our **Abpromise guarantee** covers the use of ab70227 in the following tested applications.

The application notes include recommended starting dilutions; optimal dilutions/concentrations should be determined by the end user.

Application	Abreviews	Notes
WB	★★★★★ (2)	1/1000 - 1/10000. Detects a band of approximately 30 kDa (predicted molecular weight: 30 kDa).
IP		Use at 2-5 µg/mg of lysate.

## Target

### Function

May play an important role in controlling cell growth and proliferation through the selective translation of particular classes of mRNA.

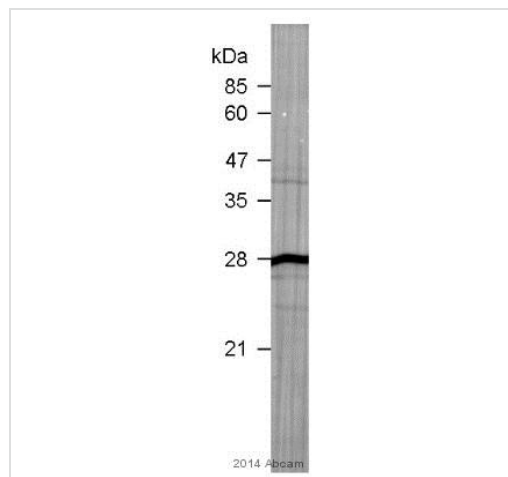
### Sequence similarities

Belongs to the ribosomal protein S6e family.

### Post-translational modifications

Ribosomal protein S6 is the major substrate of protein kinases in eukaryote ribosomes. The phosphorylation is stimulated by growth factors, tumor promoting agents, and mitogens. It is dephosphorylated at growth arrest.

## Images



Western blot - Anti-RPS6 antibody - Ribosome Marker (ab70227)

This image is courtesy of an anonymous Abreview

Anti-RPS6 antibody - Ribosome Marker (ab70227) at 1/1000 dilution + *Caenorhabditis elegans* whole adult tissue lysate at 200 µg

### Secondary

HRP-conjugated goat anti-rabbit IgG polyclonal at 1/5000 dilution

Developed using the ECL technique.

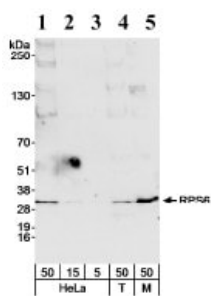
Performed under reducing conditions.

**Predicted band size:** 30 kDa

**Observed band size:** 28 kDa

**Additional bands at:** 24 kDa (possible non-specific binding), 26 kDa (possible non-specific binding), 40 kDa (possible non-specific binding)

**Exposure time:** 40 seconds



Western blot - Anti-RPS6 antibody - Ribosome Marker (ab70227)

**All lanes :** Anti-RPS6 antibody - Ribosome Marker (ab70227) at 0.04 µg/ml

**Lane 1 :** Whole cell lysate from HeLa cells at 50 µg

**Lane 2 :** Whole cell lysate from HeLa cells at 15 µg

**Lane 3 :** Whole cell lysate from HeLa cells at 5 µg

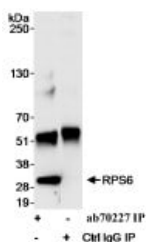
**Lane 4 :** Whole cell lysate from 293T cells at 50 µg

**Lane 5 :** Whole cell lysate from NIH3T3 cells at 50 µg

**Predicted band size:** 30 kDa

**Observed band size:** 30 kDa

**Exposure time:** 30 seconds



Immunoprecipitation - Anti-RPS6 antibody - Ribosome Marker (ab70227)

Detection of Human RPS6 by Immunoprecipitation. Samples: A) Whole cell lysate from HeLa cells (1 mg/IP; 1/4 of IP loaded) using affinity purified ab70227 at 3 µg/mg lysate for IP and at 0.04 µg/ml for subsequent WB detection. Second lane represents IgG IP control.

**Please note:** All products are "FOR RESEARCH USE ONLY. NOT FOR USE IN DIAGNOSTIC PROCEDURES"

## Our Abpromise to you: Quality guaranteed and expert technical support

- Replacement or refund for products not performing as stated on the datasheet
- Valid for 12 months from date of delivery
- Response to your inquiry within 24 hours
- We provide support in Chinese, English, French, German, Japanese and Spanish
- Extensive multi-media technical resources to help you
- We investigate all quality concerns to ensure our products perform to the highest standards

If the product does not perform as described on this datasheet, we will offer a refund or replacement. For full details of the Abpromise,

please visit <https://www.abcam.com/abpromise> or contact our technical team.

#### **Terms and conditions**

---

- Guarantee only valid for products bought direct from Abcam or one of our authorized distributors