


## Product datasheet

# Anti-RPS6 (phospho S235 + S236) antibody ab65750

1 Image

### Overview

---

<b>Product name</b>	Anti-RPS6 (phospho S235 + S236) antibody
<b>Description</b>	Sheep polyclonal to RPS6 (phospho S235 + S236)
<b>Host species</b>	Sheep
<b>Tested applications</b>	<b>Suitable for:</b> WB
<b>Species reactivity</b>	<b>Reacts with:</b> Human <b>Predicted to work with:</b> Rat, Chicken, Cow, Xenopus laevis, Cynomolgus monkey 
<b>Immunogen</b>	Synthetic peptide corresponding to Human RPS6 aa 200-300 (C terminal) (phospho S235 + S236) conjugated to keyhole limpet haemocyanin. <a href="#">Run BLAST with Expasy</a> <a href="#">Run BLAST with NCBI</a>
<b>Positive control</b>	Raji cells untreated, or treated with 10 µg/ml S6 inhibitor for 30 min.
<b>General notes</b>	<p>The Life Science industry has been in the grips of a reproducibility crisis for a number of years. Abcam is leading the way in addressing this with our range of recombinant monoclonal antibodies and knockout edited cell lines for gold-standard validation. Please check that this product meets your needs before purchasing.</p> <p>If you have any questions, special requirements or concerns, please send us an inquiry and/or contact our Support team ahead of purchase. Recommended alternatives for this product can be found below, along with publications, customer reviews and Q&amp;As</p>

### Properties

---

<b>Form</b>	Liquid
<b>Storage instructions</b>	Shipped at 4°C. Store at +4°C short term (1-2 weeks). Store at -20°C or -80°C. Avoid freeze / thaw cycle.
<b>Storage buffer</b>	pH: 7.50 Preservative: 0.05% Sodium azide Constituents: 0.238% HEPES, 0.87% Sodium chloride
<b>Purity</b>	Immunogen affinity purified
<b>Clonality</b>	Polyclonal
<b>Isotype</b>	IgG

## Applications

### The Abpromise guarantee

Our **Abpromise guarantee** covers the use of ab65750 in the following tested applications.

The application notes include recommended starting dilutions; optimal dilutions/concentrations should be determined by the end user.

Application	Abreviews	Notes
WB		Use a concentration of 2 µg/ml. Detects a band of approximately 30 kDa (predicted molecular weight: 30 kDa).

## Target

### Function

May play an important role in controlling cell growth and proliferation through the selective translation of particular classes of mRNA.

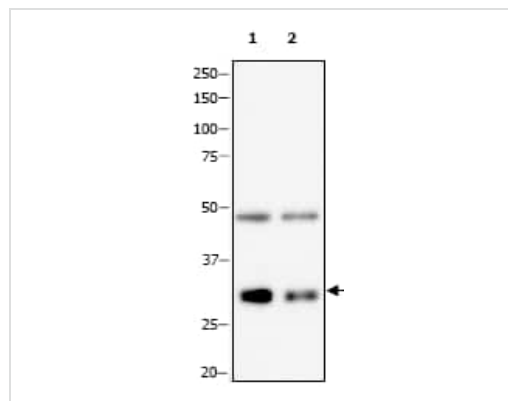
### Sequence similarities

Belongs to the ribosomal protein S6e family.

### Post-translational modifications

Ribosomal protein S6 is the major substrate of protein kinases in eukaryote ribosomes. The phosphorylation is stimulated by growth factors, tumor promoting agents, and mitogens. It is dephosphorylated at growth arrest.

## Images



Western blot - Anti-RPS6 (phospho S235 + S236) antibody (ab65750)

**All lanes :** Anti-RPS6 (phospho S235 + S236) antibody (ab65750) at 2 µg/ml

**Lane 1 :** Raji cell extracts, untreated

**Lane 2 :** Raji cell extracts, treated with 10 µg/ml S6 inhibitor for 30 min

**Predicted band size:** 30 kDa

**Observed band size:** 30 kDa

**Additional bands at:** 48 kDa. We are unsure as to the identity of these extra bands.

**Please note:** All products are "FOR RESEARCH USE ONLY. NOT FOR USE IN DIAGNOSTIC PROCEDURES"

## Our Abpromise to you: Quality guaranteed and expert technical support

- Replacement or refund for products not performing as stated on the datasheet
- Valid for 12 months from date of delivery
- Response to your inquiry within 24 hours
- We provide support in Chinese, English, French, German, Japanese and Spanish
- Extensive multi-media technical resources to help you

- We investigate all quality concerns to ensure our products perform to the highest standards

If the product does not perform as described on this datasheet, we will offer a refund or replacement. For full details of the Abpromise, please visit <https://www.abcam.com/abpromise> or contact our technical team.

### **Terms and conditions**

---

- Guarantee only valid for products bought direct from Abcam or one of our authorized distributors