

Product datasheet

Anti-RPS6 (phospho S235 + S236) antibody [SP50] ab101691

Recombinant RabMAb

8 Images

Overview

Product name	Anti-RPS6 (phospho S235 + S236) antibody [SP50]
Description	Rabbit monoclonal [SP50] to RPS6 (phospho S235 + S236)
Host species	Rabbit
Tested applications	Suitable for: Dot blot, IHC-P, ICC/IF, Flow Cyt (Intra)
Species reactivity	Reacts with: Mouse, Human
Immunogen	Synthetic peptide within Human RPS6 aa 200 to the C-terminus (phospho S235 + S236). The exact sequence is proprietary. Database link: P62753
Positive control	IHC-P: Human breast carcinoma and tonsil tissue; Mouse Spleen tissue; Rat Spleen Tissue ICC/IF: PC-3 cells. Flow Cyt (Intra): PC-3 cells.
General notes	This product is FOR RESEARCH USE ONLY. For commercial use, please contact partnerships@abcam.com. Rat: We have preliminary internal testing data to indicate this antibody may not react with this species. Please contact us for more information.

Properties

Form	Liquid
Storage instructions	Shipped at 4°C. Store at +4°C. Do Not Freeze.
Storage buffer	pH: 7.60 Preservative: 0.1% Sodium azide Constituents: PBS, 1% BSA
Purity	Protein A/G purified
Purification notes	Purified from TCS by protein A/G.
Clonality	Monoclonal
Clone number	SP50
Isotype	IgG

Applications

The Abpromise guarantee

Our **Abpromise guarantee** covers the use of ab101691 in the following tested applications.

The application notes include recommended starting dilutions; optimal dilutions/concentrations should be determined by the end user.

Application	Abreviews	Notes
Dot blot		Use a concentration of 0.123 µg/ml.
IHC-P		1/100. Perform heat mediated antigen retrieval with citrate buffer pH 6 before commencing with IHC staining protocol.
ICC/IF		1/500.
Flow Cyt (Intra)		1/200.

Target

Function

May play an important role in controlling cell growth and proliferation through the selective translation of particular classes of mRNA.

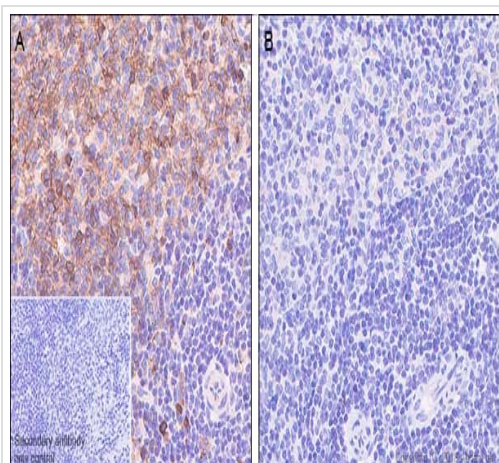
Sequence similarities

Belongs to the ribosomal protein S6e family.

Post-translational modifications

Ribosomal protein S6 is the major substrate of protein kinases in eukaryote ribosomes. The phosphorylation is stimulated by growth factors, tumor promoting agents, and mitogens. It is dephosphorylated at growth arrest.

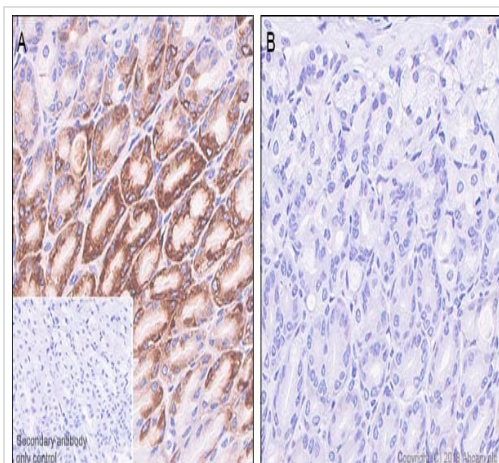
Images



Immunohistochemistry (Formalin/PFA-fixed paraffin-embedded sections) - Anti-RPS6 (phospho S235 + S236) antibody [SP50] (ab101691)

Immunohistochemistry (Formalin/PFA-fixed paraffin-embedded sections) analysis of Rat spleen tissue sections labeling RPS6 with ab101691 at 1/100 dilution (1.23 µg/ml). Heat mediated antigen retrieval with sodium citrate buffer (pH 6.0, epitope retrieval solution 1) for 10mins. Dako™REAL™ EnVision™ Detection System (K5007) was used as the secondary antibody. Hematoxylin was used as a counterstain. Cytoplasmic staining on human rat spleen without alkaline phosphatase treatment (image A); and no signal was detected when tissues were treated with alkaline phosphatase (image B), performed on a Leica Biosystems BOND™ RX instrument.

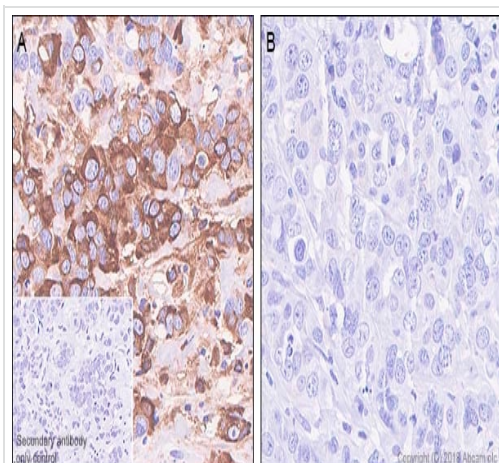
The section was incubated with ab101691 for 10 mins at room temperature.



Immunohistochemistry (Formalin/PFA-fixed paraffin-embedded sections) - Anti-RPS6 (phospho S235 + S236) antibody [SP50] (ab101691)

Immunohistochemistry (Formalin/PFA-fixed paraffin-embedded sections) analysis of Mouse stomach tissue sections labeling RPS6 with ab101691 at 1/100 dilution (1.23 µg/ml). Heat mediated antigen retrieval with sodium citrate buffer (pH 6.0, epitope retrieval solution 1) for 10mins. Dako™ REAL™ EnVision™ Detection System (K5007) was used as the secondary antibody. Hematoxylin was used as a counterstain. Cytoplasmic staining on mouse stomach without alkaline phosphatase treatment (image A); and no signal was detected when tissues were treated with alkaline phosphatase (image B), performed on a Leica Biosystems BOND™ RX instrument.

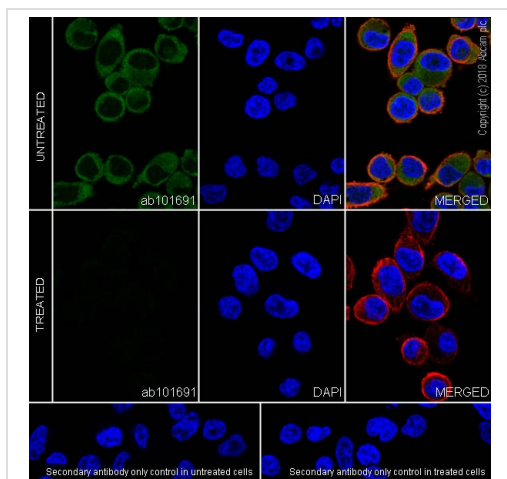
The section was incubated with ab101691 for 10 mins at room temperature.



Immunohistochemistry (Formalin/PFA-fixed paraffin-embedded sections) - Anti-RPS6 (phospho S235 + S236) antibody [SP50] (ab101691)

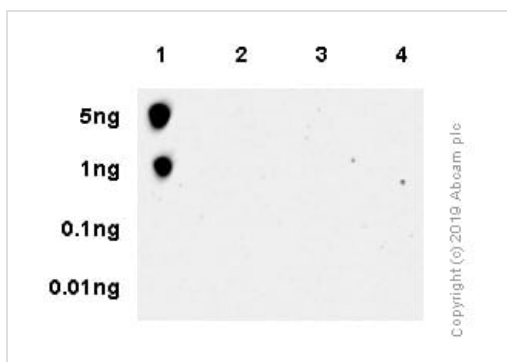
Immunohistochemistry (Formalin/PFA-fixed paraffin-embedded sections) analysis of Human breast carcinoma tissue sections labeling RPS6 with ab101691 at 1/100 dilution (1.23 µg/ml). Heat mediated antigen retrieval with sodium citrate buffer (pH 6.0, epitope retrieval solution 1) for 10mins. Dako™ REAL™ EnVision™ Detection System (K5007) was used as the secondary antibody. Hematoxylin was used as a counterstain. Cytoplasmic staining on human breast carcinoma without alkaline phosphatase treatment (image A); and no signal was detected when tissues were treated with alkaline phosphatase (image B), performed on a Leica Biosystems BOND™ RX instrument.

The section was incubated with ab101691 for 10 mins at room temperature.



Immunocytochemistry/ Immunofluorescence - Anti-RPS6 (phospho S235 + S236) antibody [SP50] (ab101691)

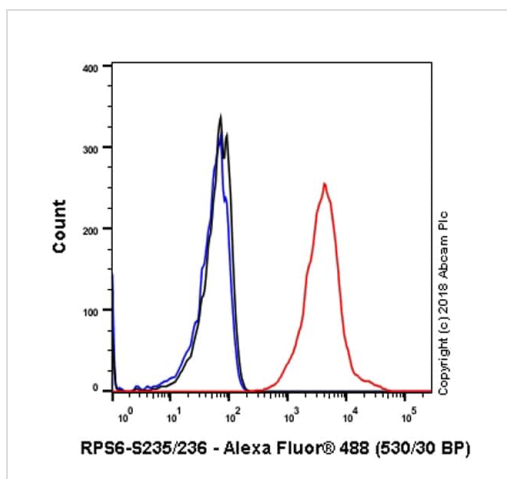
Immunocytochemistry/ Immunofluorescence analysis of PC-3 (human prostate adenocarcinoma epithelial cell) treated with Lamda phosphatase cells labeling RPS6 with purified ab101691 at 1:500 (0.25 µg/ml). Cells were fixed in 4% paraformaldehyde and permeabilized with 0.1% Triton X-100. Cells were counterstained with Ab195889 Anti-alpha Tubulin antibody [DM1A] - Microtubule Marker (Alexa Fluor® 594) 1:200 (2.5 µg/ml). Goat anti rabbit IgG (Alexa Fluor® 488, **ab150077**) was used as the secondary antibody at 1:1000 (2 µg/ml) dilution. DAPI nuclear counterstain. PBS instead of the primary antibody was used as the secondary antibody only control.



Dot Blot - Anti-RPS6 (phospho S235 + S236) antibody [SP50] (ab101691)

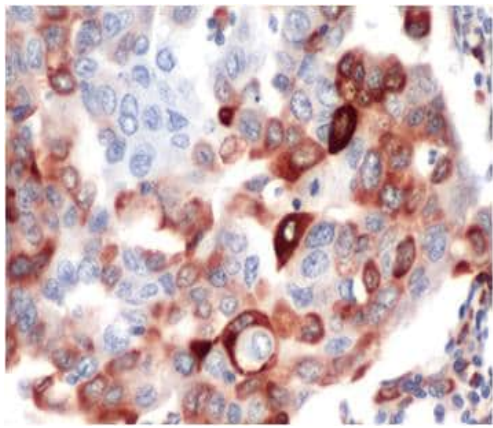
Dot blot analysis of RPS6 (phospho S235 + S236) peptide (Lane 1), RPS6 (phospho S235) peptide (phospho 2) RPS6 (phospho S236) peptide (Lane 3) and RPS6 non-phospho peptide (Lane 4) labeling RPS6 (phospho S235 + S236) peptide with purified ab101691 at 0.123 ug/mL. **ab97051** was used as the secondary antibody at 0.01 ug/mL.

Blocking buffer: 5% NFDm/TBST. Dilution buffer: 5% NFDm /TBST



Flow Cytometry (Intracellular) - Anti-RPS6 (phospho S235 + S236) antibody [SP50] (ab101691)

Flow Cytometry analysis of PC-3 (Human prostate adenocarcinoma epithelial cell) cells labeling RPS6 with purified ab101691 at 1:200 dilution (0.615 µg/ml) Red. Cells were fixed with 4% paraformaldehyde . A Goat anti rabbit IgG (Alexa Fluor® 488, **ab150077**) secondary antibody was used at 1:2000 dilution. Isotype control - Rabbit monoclonal IgG (**ab172730**) / Black. Unlabeled control - Unlabelled cells / Blue.



ab101691 at 1/100 dilution staining S6K in Human breast carcinoma by Immunohistochemistry Formalin-fixed, Paraffin-embedded tissue.

Immunohistochemistry (Formalin/PFA-fixed paraffin-embedded sections) - Anti-RPS6 (phospho S235 + S236) antibody [SP50] (ab101691)

Why choose a recombinant antibody?



Research with confidence
Consistent and reproducible results



Long-term and scalable supply
Recombinant technology



Success from the first experiment
Confirmed specificity



Ethical standards compliant
Animal-free production

Anti-RPS6 (phospho S235 + S236) antibody [SP50] (ab101691)

Please note: All products are "FOR RESEARCH USE ONLY. NOT FOR USE IN DIAGNOSTIC PROCEDURES"

Our Abpromise to you: Quality guaranteed and expert technical support

- Replacement or refund for products not performing as stated on the datasheet
- Valid for 12 months from date of delivery
- Response to your inquiry within 24 hours
- We provide support in Chinese, English, French, German, Japanese and Spanish
- Extensive multi-media technical resources to help you
- We investigate all quality concerns to ensure our products perform to the highest standards

If the product does not perform as described on this datasheet, we will offer a refund or replacement. For full details of the Abpromise, please visit <https://www.abcam.com/abpromise> or contact our technical team.

Terms and conditions

- Guarantee only valid for products bought direct from Abcam or one of our authorized distributors