

Anti-RPS6 (phospho S235) antibody [EP1338(2)Y] - BSA and Azide free ab213165

Recombinant RabMAb

4 Images

Overview

Product name	Anti-RPS6 (phospho S235) antibody [EP1338(2)Y] - BSA and Azide free
Description	Rabbit monoclonal [EP1338(2)Y] to RPS6 (phospho S235) - BSA and Azide free
Host species	Rabbit
Tested applications	Suitable for: Dot blot, WB, IP, IHC-P Unsuitable for: Flow Cyt
Species reactivity	Reacts with: Human
Immunogen	Synthetic peptide. This information is proprietary to Abcam and/or its suppliers.
Positive control	WB: HeLa cell lysate, untreated or treated with Calyculin A. IHC: Human breast adenocarcinoma tissue. IP: 293T lysate.
General notes	<p>ab213165 is the carrier-free version of ab80158.</p> <p>Our carrier-free antibodies are typically supplied in a PBS-only formulation, purified and free of BSA, sodium azide and glycerol. The carrier-free buffer and high concentration allow for increased conjugation efficiency.</p> <p>This conjugation-ready format is designed for use with fluorochromes, metal isotopes, oligonucleotides, and enzymes, which makes them ideal for antibody labelling, functional and cell-based assays, flow-based assays (e.g. mass cytometry) and Multiplex Imaging applications.</p> <p>Use our conjugation kits for antibody conjugates that are ready-to-use in as little as 20 minutes with <1 minute hands-on-time and 100% antibody recovery: available for fluorescent dyes, HRP, biotin and gold.</p> <p>This product is compatible with the Maxpar[®] Antibody Labeling Kit from Fluidigm, without the need for antibody preparation. Maxpar[®] is a trademark of Fluidigm Canada Inc.</p> <p>This product is a recombinant monoclonal antibody, which offers several advantages including:</p> <ul style="list-style-type: none"> - High batch-to-batch consistency and reproducibility - Improved sensitivity and specificity - Long-term security of supply - Animal-free production <p>For more information see here.</p> <p>Our RabMAb[®] technology is a patented hybridoma-based technology for making rabbit monoclonal antibodies. For details on our patents, please refer to RabMAb[®] patents.</p>

Rat: We have preliminary internal testing data to indicate this antibody may not react with this species. Please contact us for more information.

Properties

Form	Liquid
Storage instructions	Shipped at 4°C. Store at +4°C. Do Not Freeze.
Storage buffer	pH: 7.20 Constituent: PBS
Carrier free	Yes
Purity	Protein A purified
Clonality	Monoclonal
Clone number	EP1338(2)Y
Isotype	IgG

Applications

The Abpromise guarantee Our **Abpromise guarantee** covers the use of ab213165 in the following tested applications. The application notes include recommended starting dilutions; optimal dilutions/concentrations should be determined by the end user.

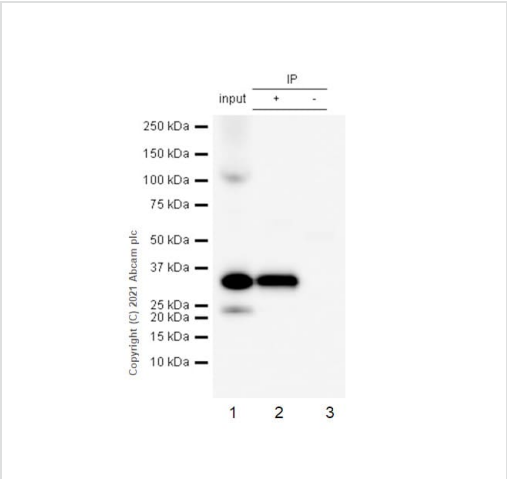
Application	Abreviews	Notes
Dot blot		Use at an assay dependent concentration.
WB		Use at an assay dependent concentration. Detects a band of approximately 30 kDa (predicted molecular weight: 30 kDa).
IP		Use at an assay dependent concentration.
IHC-P		Use at an assay dependent concentration. Perform heat mediated antigen retrieval with Tris/EDTA buffer pH 9.0 before commencing with IHC staining protocol.

Application notes Is unsuitable for Flow Cyt.

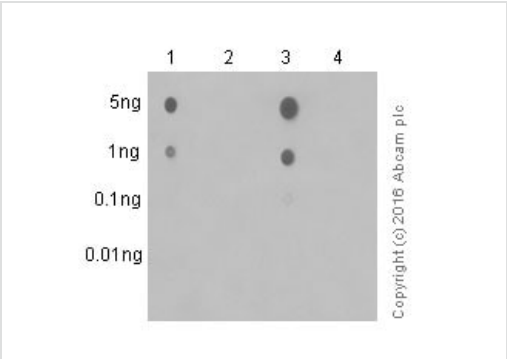
Target

Function	May play an important role in controlling cell growth and proliferation through the selective translation of particular classes of mRNA.
Sequence similarities	Belongs to the ribosomal protein S6e family.
Post-translational modifications	Ribosomal protein S6 is the major substrate of protein kinases in eukaryote ribosomes. The phosphorylation is stimulated by growth factors, tumor promoting agents, and mitogens. It is dephosphorylated at growth arrest.

Images



Immunoprecipitation - Anti-RPS6 (phospho S235) antibody [EP1338(2)Y] - BSA and Azide free (ab213165)



Dot Blot - Anti-RPS6 (phospho S235) antibody [EP1338(2)Y] - BSA and Azide free (ab213165)

This data was developed using [ab80158](#), the same antibody clone in a different buffer formulation.

RPS6 was immunoprecipitated from 0.35 mg 293T (Human embryonic kidney epithelial cell) treated with Calyculin A(100nM 30min) whole cell lysate 10 µg with [ab80158](#) at 1/50 dilution (2µg). VeriBlot for IP Detection Reagent (HRP)([ab131366](#)) was used at 1/5000 dilution.

Lane 1: 293T (Human embryonic kidney epithelial cell) treated with Calyculin A(100nM 30min) whole cell lysate 10 µg

Lane 2: abab80158 IP in 293T treated with Calyculin A(100nM 30min) whole cell lysate

Lane 3: Rabbit monoclonal IgG ([ab172730](#)) instead of [ab80158](#) in 293T treated with Calyculin A(100nM 30min) whole cell lysate

Blocking and dilution buffer and concentration: 5% NFDm/TBST.

Dot Blot analysis of -

Lane 1: Rb (pS235) phospho peptide

Lane 2: Rb (pS236) phospho peptide

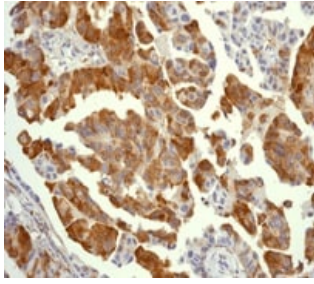
Lane 3: Rb (pS235 & pS236) phospho peptide

Lane 4: Rb non-phospho peptide

5% NFDm/TBST was used as the diluting and blocking buffer.

[ab97051](#) Goat Anti-Rabbit IgG, (H+L), Peroxidase conjugated was used as the secondary antibody at 1/100000 dilution. Exposure time: 3 minutes.

This data was developed using the same antibody clone in a different buffer formulation containing PBS, BSA, glycerol, and sodium azide ([ab80158](#)).



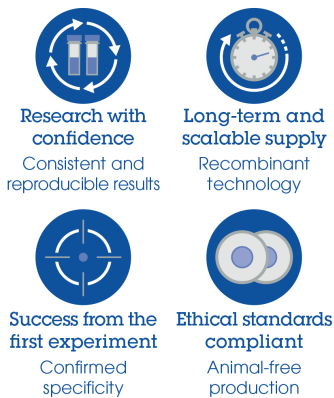
Immunohistochemistry (Formalin/PFA-fixed paraffin-embedded sections) - Anti-RPS6 (phospho S235) antibody [EP1338(2)Y] - BSA and Azide free (ab213165)

ab80158 at 1/100-1/250 dilution staining RPS6 in human breast adenocarcinoma by Immunohistochemistry, Paraffin-embedded tissue.

This data was developed using the same antibody clone in a different buffer formulation containing PBS, BSA, glycerol, and sodium azide (**ab80158**).

Perform heat mediated antigen retrieval with EDTA buffer pH 9 before commencing with IHC staining protocol.

Why choose a recombinant antibody?



Anti-RPS6 (phospho S235) antibody [EP1338(2)Y] - BSA and Azide free (ab213165)

Please note: All products are "FOR RESEARCH USE ONLY. NOT FOR USE IN DIAGNOSTIC PROCEDURES"

Our Abpromise to you: Quality guaranteed and expert technical support

- Replacement or refund for products not performing as stated on the datasheet
- Valid for 12 months from date of delivery
- Response to your inquiry within 24 hours
- We provide support in Chinese, English, French, German, Japanese and Spanish
- Extensive multi-media technical resources to help you
- We investigate all quality concerns to ensure our products perform to the highest standards

If the product does not perform as described on this datasheet, we will offer a refund or replacement. For full details of the Abpromise, please visit <https://www.abcam.com/abpromise> or contact our technical team.

Terms and conditions

- Guarantee only valid for products bought direct from Abcam or one of our authorized distributors