

Product datasheet

Anti-RPS6 (phospho S235) antibody [EP1338(2)Y] - Ribosome Marker ab80158

Recombinant RabMAb

[2 References](#) [6 Images](#)

Overview

Product name	Anti-RPS6 (phospho S235) antibody [EP1338(2)Y] - Ribosome Marker
Description	Rabbit monoclonal [EP1338(2)Y] to RPS6 (phospho S235) - Ribosome Marker
Host species	Rabbit
Tested applications	Suitable for: WB, IP, IHC-P, Dot blot Unsuitable for: Flow Cyt or ICC/IF
Species reactivity	Reacts with: Human
Immunogen	Synthetic peptide. This information is proprietary to Abcam and/or its suppliers.
Positive control	WB: HeLa cell lysate, untreated or treated with Calyculin A. IHC: Human breast adenocarcinoma tissue. IP: 293T lysate.
General notes	<p>This product is a recombinant monoclonal antibody, which offers several advantages including:</p> <ul style="list-style-type: none">- High batch-to-batch consistency and reproducibility- Improved sensitivity and specificity- Long-term security of supply- Animal-free production <p>For more information see here.</p> <p>Our RabMAb[®] technology is a patented hybridoma-based technology for making rabbit monoclonal antibodies. For details on our patents, please refer to RabMAb[®] patents.</p> <p>Rat: We have preliminary internal testing data to indicate this antibody may not react with this species. Please contact us for more information.</p>

Properties

Form	Liquid
Storage instructions	Shipped at 4°C. Store at +4°C short term (1-2 weeks). Upon delivery aliquot. Store at -20°C long term. Avoid freeze / thaw cycle.
Storage buffer	pH: 7.20 Preservative: 0.01% Sodium azide Constituents: 9% PBS, 40% Glycerol (glycerin, glycerine), 0.05% BSA, 50% Tissue culture

	supernatant
Purity	Tissue culture supernatant
Clonality	Monoclonal
Clone number	EP1338(2)Y
Isotype	IgG

Applications

The Abpromise guarantee Our **Abpromise guarantee** covers the use of ab80158 in the following tested applications. The application notes include recommended starting dilutions; optimal dilutions/concentrations should be determined by the end user.

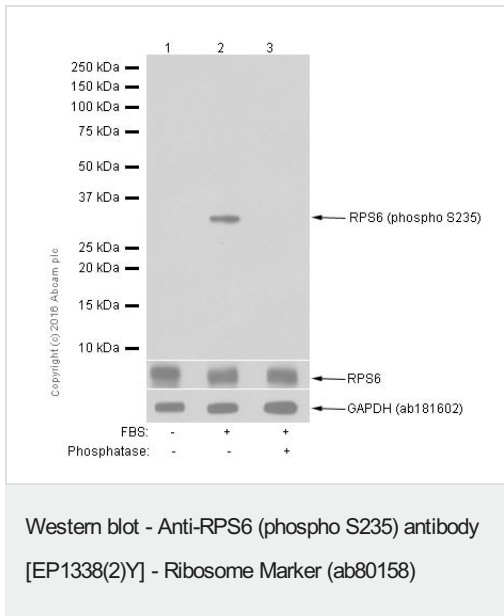
Application	Abreviews	Notes
WB		1/10000 - 1/200000. Detects a band of approximately 30 kDa (predicted molecular weight: 30 kDa).
IP		1/30.
IHC-P		Use at an assay dependent concentration. Perform heat mediated antigen retrieval with Tris/EDTA buffer pH 9.0 before commencing with IHC staining protocol.
Dot blot		Use at an assay dependent concentration.

Application notes Is unsuitable for Flow Cyt or ICC/IF.

Target

Function	May play an important role in controlling cell growth and proliferation through the selective translation of particular classes of mRNA.
Sequence similarities	Belongs to the ribosomal protein S6e family.
Post-translational modifications	Ribosomal protein S6 is the major substrate of protein kinases in eukaryote ribosomes. The phosphorylation is stimulated by growth factors, tumor promoting agents, and mitogens. It is dephosphorylated at growth arrest.

Images



All lanes : Anti-RPS6 (phospho S235) antibody [EP1338(2)Y] - Ribosome Marker (ab80158) at 1/1000 dilution

Lane 1 : HeLa (Human cervix adenocarcinoma epithelial cell) serum starved for 24 h. Whole cell lysates

Lane 2 : HeLa (Human cervix adenocarcinoma epithelial cell) serum starved for 24 h, then 20% FBS incubated for 90 minutes. Whole cell lysates

Lane 3 : HeLa (Human cervix adenocarcinoma epithelial cell) serum starved for 24 h, then 20% FBS incubated for 90 minutes. Whole cell lysates. Then the membrane was incubated with phosphatase.

Lysates/proteins at 15 µg per lane.

Secondary

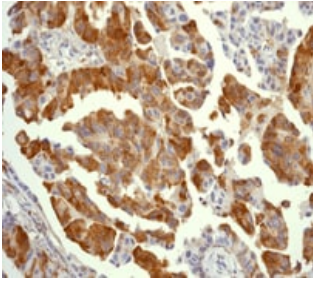
All lanes : Goat Anti-Rabbit IgG H&L (HRP) (**ab97051**) at 1/20000 dilution

Predicted band size: 30 kDa

Observed band size: 30 kDa

Exposure time: 1 minute

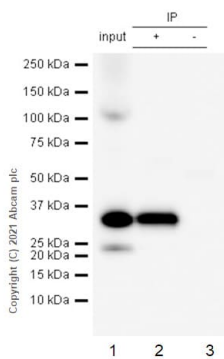
Blocking and diluting buffer and concentration: 5% NFDN/TBST.



Immunohistochemistry (Formalin/PFA-fixed paraffin-embedded sections) - Anti-RPS6 (phospho S235) antibody [EP1338(2)Y] - Ribosome Marker (ab80158)

ab80158 at 1/100-1/250 dilution staining RPS6 in human breast adenocarcinoma by Immunohistochemistry, Paraffin-embedded tissue.

Perform heat mediated antigen retrieval with EDTA buffer pH 9 before commencing with IHC staining protocol.



Immunoprecipitation - Anti-RPS6 (phospho S235) antibody [EP1338(2)Y] - Ribosome Marker (ab80158)

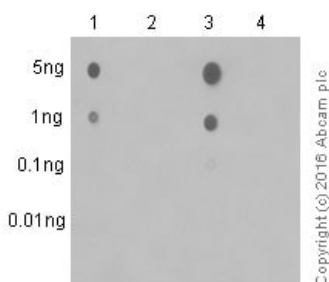
RPS6 was immunoprecipitated from 0.35 mg 293T (Human embryonic kidney epithelial cell) treated with Calyculin A(100nM 30min) whole cell lysate 10 µg with ab80158 at 1/50 dilution (2µg). VeriBlot for IP Detection Reagent (HRP)(**ab131366**) was used at 1/5000 dilution.

Lane 1: 293T (Human embryonic kidney epithelial cell) treated with Calyculin A(100nM 30min) whole cell lysate 10 µg

Lane 2: ab80158 IP in 293T treated with Calyculin A(100nM 30min) whole cell lysate

Lane 3: Rabbit monoclonal IgG (**ab172730**) instead of ab80158 in 293T treated with Calyculin A(100nM 30min) whole cell lysate

Blocking and dilution buffer and concentration: 5% NFDm/TBST.



Dot Blot - Anti-RPS6 (phospho S235) antibody [EP1338(2)Y] - Ribosome Marker (ab80158)

Dot Blot analysis of -

Lane 1: Rb (pS235) phospho peptide

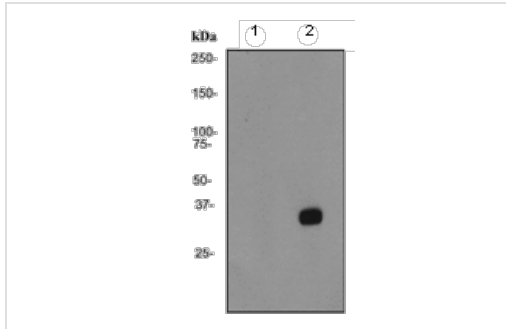
Lane 2: Rb (pS236) phospho peptide

Lane 3: Rb (pS235 & pS236) phospho peptide

Lane 4: Rb non-phospho peptide

5% NFDm/TBST was used as the diluting and blocking buffer.

ab97051 Goat Anti-Rabbit IgG, (H+L), Peroxidase conjugated was used as the secondary antibody at 1/100000 dilution. Exposure time: 3 minutes.



Western blot - Anti-RPS6 (phospho S235) antibody [EP1338(2)Y] - Ribosome Marker (ab80158)

All lanes : Anti-RPS6 (phospho S235) antibody [EP1338(2)Y] - Ribosome Marker (ab80158) at 1/200000 dilution

Lane 1 : HeLa cell lysate, untreated

Lane 2 : HeLa cell lysate, treated with Calyculin A

Lysates/proteins at 10 µg per lane.





Secondary

All lanes : goat anti-rabbit HRP at 1/2000 dilution

Predicted band size: 30 kDa

Observed band size: 30 kDa

Why choose a recombinant antibody?

 <p>Research with confidence Consistent and reproducible results</p>	 <p>Long-term and scalable supply Recombinant technology</p>
 <p>Success from the first experiment Confirmed specificity</p>	 <p>Ethical standards compliant Animal-free production</p>

Anti-RPS6 (phospho S235) antibody [EP1338(2)Y] - Ribosome Marker (ab80158)

Please note: All products are "FOR RESEARCH USE ONLY. NOT FOR USE IN DIAGNOSTIC PROCEDURES"

Our Abpromise to you: Quality guaranteed and expert technical support

- Replacement or refund for products not performing as stated on the datasheet
- Valid for 12 months from date of delivery
- Response to your inquiry within 24 hours
- We provide support in Chinese, English, French, German, Japanese and Spanish
- Extensive multi-media technical resources to help you
- We investigate all quality concerns to ensure our products perform to the highest standards

If the product does not perform as described on this datasheet, we will offer a refund or replacement. For full details of the Abpromise, please visit <https://www.abcam.com/abpromise> or contact our technical team.

Terms and conditions

- Guarantee only valid for products bought direct from Abcam or one of our authorized distributors