



Product datasheet

Anti-Rpt5/TBP-1 antibody ab22676

[3 References](#) [1 Image](#)

Overview

Product name	Anti-Rpt5/TBP-1 antibody
Description	Rabbit polyclonal to Rpt5/TBP-1
Host species	Rabbit
Specificity	ab22676 reacts with 19S regulator ATPase subunit Rpt5/TBP-1 (Yta1).
Tested applications	Suitable for: WB
Species reactivity	Reacts with: Saccharomyces cerevisiae, Arabidopsis thaliana, Fungi
Immunogen	Recombinant fragment corresponding to Saccharomyces cerevisiae Rpt5/TBP-1 aa 1-100 (N terminal). Sequence: MATLEELDAQTLPGDDELDQEILNLSTQELQTRAKLLDNEI RIFRSELQR LSHENNVMLEKIKDNKEKIKNNRQLPYLVANVVEVMDMNE IEDKENSEST
	 Run BLAST with  Run BLAST with
Positive control	Yeast 26S proteasome
General notes	<p>The Life Science industry has been in the grips of a reproducibility crisis for a number of years. Abcam is leading the way in addressing this with our range of recombinant monoclonal antibodies and knockout edited cell lines for gold-standard validation. Please check that this product meets your needs before purchasing.</p> <p>If you have any questions, special requirements or concerns, please send us an inquiry and/or contact our Support team ahead of purchase. Recommended alternatives for this product can be found below, along with publications, customer reviews and Q&As</p>

Properties

Form	Liquid
Storage instructions	Shipped at 4°C. Upon delivery aliquot and store at -20°C. Avoid freeze / thaw cycles.
Storage buffer	Constituent: Whole serum
Purity	Whole antiserum
Clonality	Polyclonal

Isotype

IgG

Applications

The Abpromise guarantee

Our **Abpromise guarantee** covers the use of ab22676 in the following tested applications.

The application notes include recommended starting dilutions; optimal dilutions/concentrations should be determined by the end user.

Application	Abreviews	Notes
WB		

Application notes

WB: 1/10000 - 1/50000. Detects a band of approximately 48 kDa (predicted molecular weight: 48 kDa).

Notes: Dilute to working strength with phosphate buffered saline pH 7.2-7.4 and 1% normal goat serum (if a goat anti-rabbit IgG linker antibody is to be used).

Not tested in other applications.

Optimal dilutions/concentrations should be determined by the end user.

Target

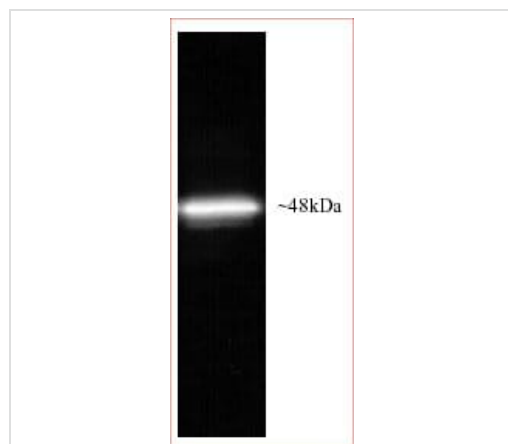
Relevance

In the yeast *S. cerevisiae* 12 different members of a novel gene family of putative ATPases have been identified and characterised. Due to their similarities to TBP1, a human immunodeficiency tat binding protein, they have been designated the YTA family or yeast tat binding analogues. All share a region of high similarity of approximately 300 amino acids in length. Rpt5p or YTA1, is one of six ATPases of the 19S regulatory particle of the 26S proteasome involved in the degradation of ubiquitinated substrates.

Cellular localization

Nuclear

Images



Western blot - Anti-Rpt5/TBP-1 antibody (ab22676)

Anti-Rpt5/TBP-1 antibody (ab22676) at 1/25000 dilution (PVDF blotting membrane)

Developed using the ECL technique.

Performed under reducing conditions.

Predicted band size: 48 kDa

Observed band size: 48 kDa

Exposure time: 1 minute

Please note: All products are "FOR RESEARCH USE ONLY. NOT FOR USE IN DIAGNOSTIC PROCEDURES"

Our Abpromise to you: Quality guaranteed and expert technical support

- Replacement or refund for products not performing as stated on the datasheet
- Valid for 12 months from date of delivery
- Response to your inquiry within 24 hours

- We provide support in Chinese, English, French, German, Japanese and Spanish
- Extensive multi-media technical resources to help you
- We investigate all quality concerns to ensure our products perform to the highest standards

If the product does not perform as described on this datasheet, we will offer a refund or replacement. For full details of the Abpromise, please visit <https://www.abcam.com/abpromise> or contact our technical team.

Terms and conditions

- Guarantee only valid for products bought direct from Abcam or one of our authorized distributors