


Product datasheet

Anti-RRM1 antibody [EPR8482] α b133690

Recombinant RabMAb

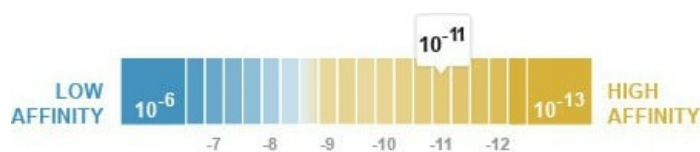
5 Images

Overview

Product name	Anti-RRM1 antibody [EPR8482]
Description	Rabbit monoclonal [EPR8482] to RRM1
Host species	Rabbit
Tested applications	Suitable for: WB, IHC-P Unsuitable for: ICC/IF or IP
Species reactivity	Reacts with: Mouse, Human Predicted to work with: Rat 
Immunogen	Synthetic peptide within Human RRM1 aa 50-150. The exact sequence is proprietary.
Positive control	HeLa, HT29, RAW 264.7 and NIH 3T3 cell lysates; Human placenta and kidney tissues.
General notes	This product is a recombinant monoclonal antibody, which offers several advantages including: <ul style="list-style-type: none"> - High batch-to-batch consistency and reproducibility - Improved sensitivity and specificity - Long-term security of supply - Animal-free production For more information see here . Our RabMAb [®] technology is a patented hybridoma-based technology for making rabbit monoclonal antibodies. For details on our patents, please refer to RabMAb[®] patents .

Properties

Form	Liquid
Storage instructions	Shipped at 4°C. Store at -20°C. Stable for 12 months at -20°C.
Dissociation constant (K_D)	$K_D = 1.24 \times 10^{-11}$ M



[Learn more about \$K_D\$](#)

Storage buffer	pH: 7.20 Preservative: 0.01% Sodium azide
----------------	--

	Constituents: 9% PBS, 40% Glycerol (glycerin, glycerine), 0.05% BSA, 50% Tissue culture supernatant
Purity	Protein A purified
Clonality	Monoclonal
Clone number	EPR8482
Isotype	IgG

Applications

The Abpromise guarantee Our **Abpromise guarantee** covers the use of ab133690 in the following tested applications. The application notes include recommended starting dilutions; optimal dilutions/concentrations should be determined by the end user.

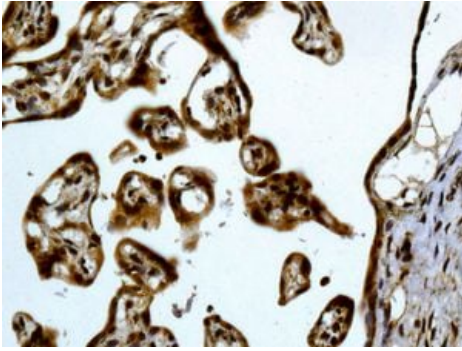
Application	Abreviews	Notes
WB		1/1000 - 1/10000. Detects a band of approximately 90 kDa (predicted molecular weight: 90 kDa).
IHC-P		1/250 - 1/500. Perform heat mediated antigen retrieval with citrate buffer pH 6 before commencing with IHC staining protocol.

Application notes Is unsuitable for ICC/IF or IP.

Target

Function	Provides the precursors necessary for DNA synthesis. Catalyzes the biosynthesis of deoxyribonucleotides from the corresponding ribonucleotides.
Pathway	Genetic information processing; DNA replication.
Sequence similarities	Belongs to the ribonucleoside diphosphate reductase large chain family. Contains 1 ATP-cone domain.
Cellular localization	Cytoplasm.

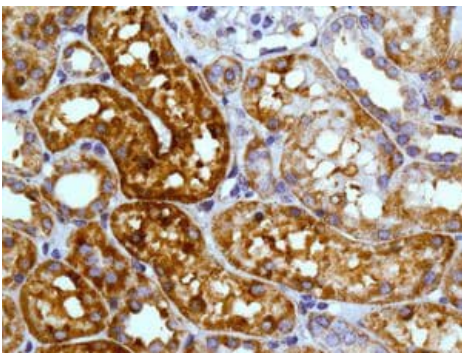
Images



Immunohistochemistry (Formalin/PFA-fixed paraffin-embedded sections) - Anti-RRM1 antibody [EPR8482] (ab133690)

Immunohistochemical analysis of paraffin-embedded Human placenta tissue labelling RRM1 with ab133690 at 1/250 dilution.

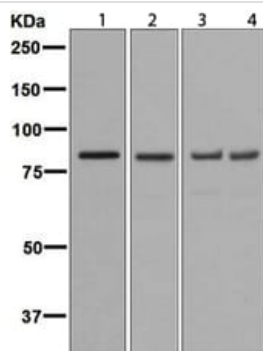
Perform heat mediated antigen retrieval with citrate buffer pH 6 before commencing with IHC staining protocol.



Immunohistochemistry (Formalin/PFA-fixed paraffin-embedded sections) - Anti-RRM1 antibody [EPR8482] (ab133690)

Immunohistochemical analysis of paraffin-embedded Human kidney tissue labelling RRM1 with ab133690 at 1/250 dilution.

Perform heat mediated antigen retrieval with citrate buffer pH 6 before commencing with IHC staining protocol.



Western blot - Anti-RRM1 antibody [EPR8482] (ab133690)

All lanes : Anti-RRM1 antibody [EPR8482] (ab133690) at 1/1000 dilution

Lane 1 : HeLa cell lysate

Lane 2 : HT29 cell lysate

Lane 3 : RAW 264.7 cell lysate

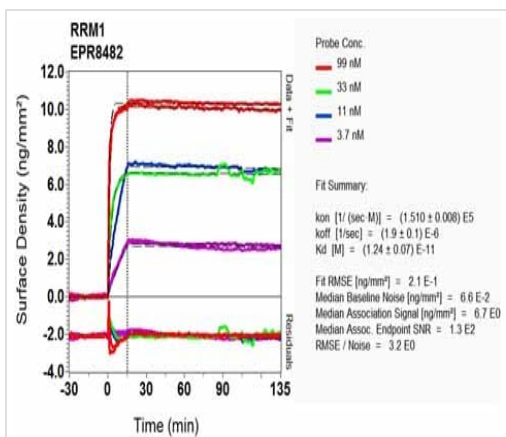
Lane 4 : NIH 3T3 cell lysate

Lysates/proteins at 10 µg per lane.

Secondary

All lanes : Goat anti-Rabbit HRP at 1/2000 dilution

Predicted band size: 90 kDa



SPR Scanning - Anti-RRM1 antibody [EPR8482]
(ab133690)

Equilibrium dissociation constant (K_D)

Learn more about K_D

[Click here to learn more about \$K_D\$](#)

Why choose a recombinant antibody?

Research with confidence
Consistent and reproducible results

Long-term and scalable supply
Recombinant technology

Success from the first experiment
Confirmed specificity

Ethical standards compliant
Animal-free production

Anti-RRM1 antibody [EPR8482] (ab133690)

Please note: All products are "FOR RESEARCH USE ONLY. NOT FOR USE IN DIAGNOSTIC PROCEDURES"

Our Abpromise to you: Quality guaranteed and expert technical support

- Replacement or refund for products not performing as stated on the datasheet
- Valid for 12 months from date of delivery
- Response to your inquiry within 24 hours
- We provide support in Chinese, English, French, German, Japanese and Spanish
- Extensive multi-media technical resources to help you
- We investigate all quality concerns to ensure our products perform to the highest standards

If the product does not perform as described on this datasheet, we will offer a refund or replacement. For full details of the Abpromise, please visit <https://www.abcam.com/abpromise> or contact our technical team.

Terms and conditions

- Guarantee only valid for products bought direct from Abcam or one of our authorized distributors