

Product datasheet

Anti-RRM1 antibody [EPR8483] ab137114

Recombinant RabMAb

★★★★★ [1 Abreviews](#) [15 References](#) [9 Images](#)

Overview

Product name	Anti-RRM1 antibody [EPR8483]
Description	Rabbit monoclonal [EPR8483] to RRM1
Host species	Rabbit
Specificity	The mouse and rat recommendation is based on the WB results. We do not guarantee IHC-P for mouse and rat.
Tested applications	Suitable for: Flow Cyt (Intra), WB, ICC/IF, IHC-P
Species reactivity	Reacts with: Mouse, Rat, Human
Immunogen	Synthetic peptide within Human RRM1 aa 700-800. The exact sequence is proprietary. Database link: P23921
Positive control	WB: HT-29, A549, MCF7 and HeLa whole cell lysate (ab150035), Mouse colon, Rat brain, and Rat colon lysates. IHC-P: human lung and colon carcinoma tissues. ICC/IF: HT-29 cells.
General notes	This product is a recombinant monoclonal antibody, which offers several advantages including: <ul style="list-style-type: none">- High batch-to-batch consistency and reproducibility- Improved sensitivity and specificity- Long-term security of supply- Animal-free production For more information see here . Our RabMAb [®] technology is a patented hybridoma-based technology for making rabbit monoclonal antibodies. For details on our patents, please refer to RabMAb[®] patents .

Properties

Form	Liquid
Storage instructions	Shipped at 4°C. Store at -20°C.
Storage buffer	Preservative: 0.01% Sodium azide Constituents: PBS, 40% Glycerol (glycerin, glycerine), 0.05% BSA
Purity	Protein A purified
Clonality	Monoclonal
Clone number	EPR8483

Isotype

IgG

Applications

The Abpromise guarantee

Our **Abpromise guarantee** covers the use of ab137114 in the following tested applications.

The application notes include recommended starting dilutions; optimal dilutions/concentrations should be determined by the end user.

Application	Abreviews	Notes
Flow Cyt (Intra)		1/100.
WB		1/10000 - 1/50000. Predicted molecular weight: 90 kDa.
ICC/IF	★★★★★ (1)	1/100 - 1/250.
IHC-P		1/1000. Perform heat mediated antigen retrieval with citrate buffer pH 6 before commencing with IHC staining protocol. The mouse and rat recommendation is based on the WB results. We do not guarantee IHC-P for mouse and rat. See <u>IHC antigen retrieval protocols</u> . For unpurified use at 1/100 - 1/250.

Target

Function

Provides the precursors necessary for DNA synthesis. Catalyzes the biosynthesis of deoxyribonucleotides from the corresponding ribonucleotides.

Pathway

Genetic information processing; DNA replication.

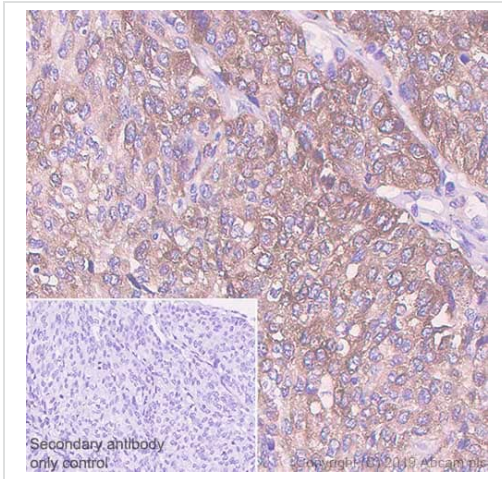
Sequence similarities

Belongs to the ribonucleoside diphosphate reductase large chain family. Contains 1 ATP-cone domain.

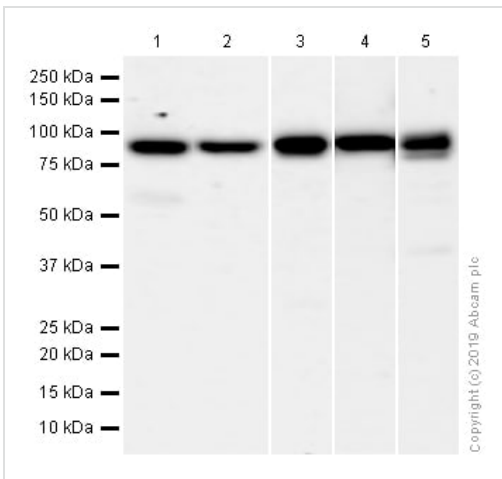
Cellular localization

Cytoplasm.

Images



Immunohistochemistry (Formalin/PFA-fixed paraffin-embedded sections) - Anti-RRM1 antibody [EPR8483] (ab137114)



Western blot - Anti-RRM1 antibody [EPR8483] (ab137114)

Immunohistochemistry (Formalin/PFA-fixed paraffin-embedded sections) analysis of human lung carcinoma tissue sections labeling RRM1 with purified ab137114 at 1/1000 dilution (0.95 µg/ml). Perform heat mediated antigen retrieval using **ab93684** (Tris/EDTA buffer, pH 9.0). ImmunoHistoProbe one step HRP Polymer (ready to use) was used as the secondary antibody. Negative control: PBS instead of the primary antibody. Hematoxylin was used as a counterstain.

All lanes : Anti-RRM1 antibody [EPR8483] (ab137114) at 1/10000 dilution (Purified)

Lane 1 : HT-29 (Human colorectal adenocarcinoma epithelial cell) whole cell lysates

Lane 2 : A549 (Human lung carcinoma epithelial cell) whole cell lysates

Lane 3 : Mouse colon lysates

Lane 4 : Rat brain lysates

Lane 5 : Rat colon lysates

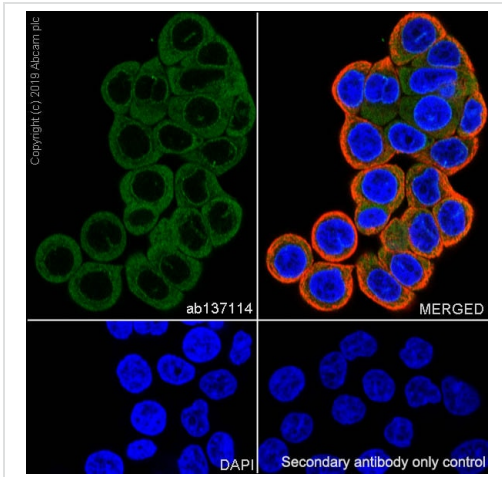
Lysates/proteins at 20 µg per lane.

Secondary

All lanes : Goat Anti-Rabbit IgG H&L (HRP) (**ab97051**) at 1/20000 dilution

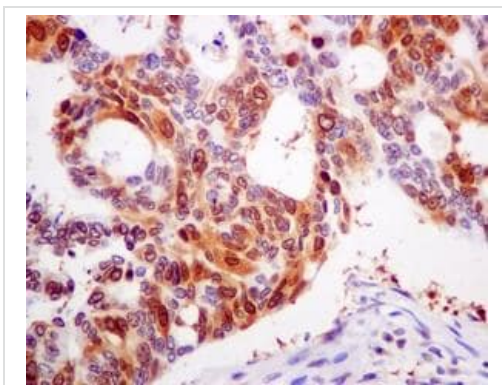
Predicted band size: 90 kDa

Observed band size: 90 kDa



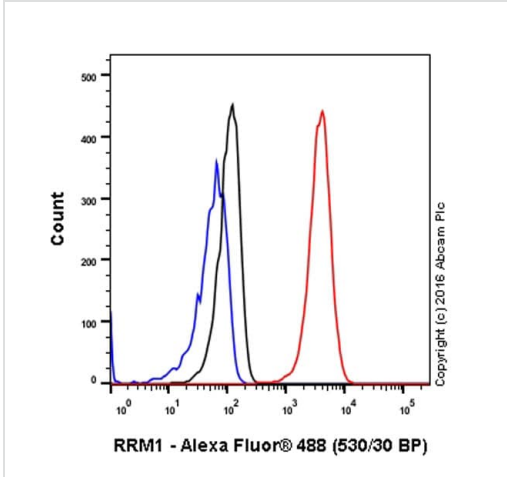
Immunocytochemistry/ Immunofluorescence - Anti-RRM1 antibody [EPR8483] (ab137114)

Immunocytochemistry/ Immunofluorescence analysis of HT-29 (Human colorectal adenocarcinoma epithelial cell) cells labeling RRM1 with purified ab137114 at 1/100 dilution (9.5 µg/ml). Cells were fixed in 4% Paraformaldehyde and permeabilized with 0.1% tritonX-100. Cells were counterstained with Ab195889 Anti-alpha Tubulin antibody [DM1A] - Microtubule Marker (Alexa Fluor® 594) 1/200 (2.5 µg/ml). Goat anti rabbit IgG (Alexa Fluor® 488, **ab150077**) was used as the secondary antibody at 1/1000 (2 µg/ml) dilution. DAPI (blue) was used as nuclear counterstain. PBS instead of the primary antibody was used as the secondary antibody only control.



Immunohistochemistry (Formalin/PFA-fixed paraffin-embedded sections) - Anti-RRM1 antibody [EPR8483] (ab137114)

Immunohistochemical analysis of paraffin-embedded Human colon carcinoma tissue labelling RRM1 with ab137114 at 1/100 dilution. Perform heat mediated antigen retrieval with citrate buffer pH 6 before commencing with IHC staining protocol.

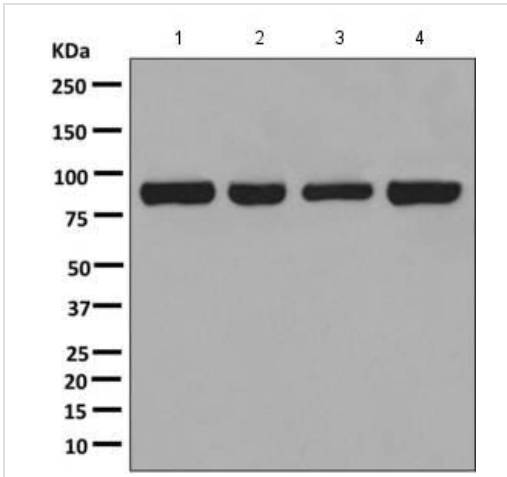


Flow Cytometry (Intracellular) - Anti-RRM1 antibody [EPR8483] (ab137114)

unpurified ab137114 staining RRM1 in the human cell line HeLa (human cervix adenocarcinoma) by intracellular flow cytometry. Cells were fixed with 4% paraformaldehyde, permeabilised with 90% methanol and the sample was incubated with the primary antibody at a dilution of 1/100. A goat anti rabbit IgG (Alexa Fluor® 488) at a dilution of 1/2000 was used as the secondary antibody.

Isotype control: Rabbit monoclonal IgG (Black)

Unlabelled control: Cell without incubation with primary antibody and secondary antibody (Blue)



Western blot - Anti-RRM1 antibody [EPR8483] (ab137114)

All lanes : Anti-RRM1 antibody [EPR8483] (ab137114) at 1/10000 dilution ((unpurified))

Lane 1 : HT29 cell lysate

Lane 2 : A549 cell lysate

Lane 3 : MCF7 cell lysate

Lane 4 : HeLa cell lysate

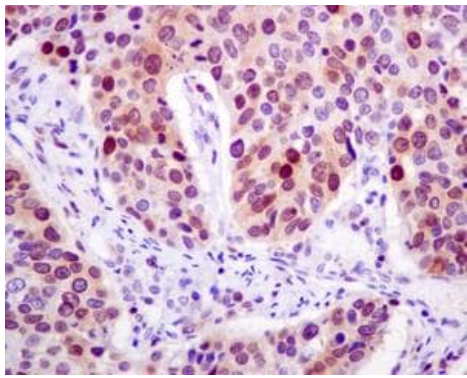
Lysates/proteins at 10 µg per lane.

Secondary

All lanes : Standard HRP-labeled goat anti-rabbit at 1/2000 dilution

Developed using the ECL technique.

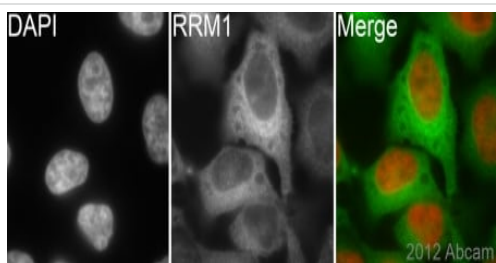
Predicted band size: 90 kDa



Immunohistochemistry (Formalin/PFA-fixed paraffin-embedded sections) - Anti-RRM1 antibody [EPR8483] (ab137114)

Immunohistochemical analysis of paraffin-embedded Human lung carcinoma tissue labelling RRM1 with unpurified ab137114 at 1/100 dilution.

Perform heat mediated antigen retrieval with citrate buffer pH 6 before commencing with IHC staining protocol.




Immunocytochemistry/ Immunofluorescence - Anti-RRM1 antibody [EPR8483] (ab137114)

Image courtesy of an Abreview submitted by Dr. Kirk McManus, Univ. of Manitoba/Cancer Care MCB, Canada

Unpurified ab137114 (1/200) staining RRM1 in HeLa cells (green). Cells were fixed in paraformaldehyde, permeabilised in 0.5% Triton X-100/PBS and counterstained with DAPI in order to highlight the nucleus (red). For further experimental details please refer to Abreview.

Why choose a recombinant antibody?

 Research with confidence Consistent and reproducible results	 Long-term and scalable supply Recombinant technology
 Success from the first experiment Confirmed specificity	 Ethical standards compliant Animal-free production

Anti-RRM1 antibody [EPR8483] (ab137114)

Please note: All products are "FOR RESEARCH USE ONLY. NOT FOR USE IN DIAGNOSTIC PROCEDURES"

Our Abpromise to you: Quality guaranteed and expert technical support

- Replacement or refund for products not performing as stated on the datasheet
- Valid for 12 months from date of delivery
- Response to your inquiry within 24 hours

- We provide support in Chinese, English, French, German, Japanese and Spanish
- Extensive multi-media technical resources to help you
- We investigate all quality concerns to ensure our products perform to the highest standards

If the product does not perform as described on this datasheet, we will offer a refund or replacement. For full details of the Abpromise, please visit <https://www.abcam.com/abpromise> or contact our technical team.

Terms and conditions

- Guarantee only valid for products bought direct from Abcam or one of our authorized distributors