




Product datasheet

Anti-RRP4 antibody ab156698

[3 References](#) [3 Images](#)

Overview

Product name	Anti-RRP4 antibody
Description	Rabbit polyclonal to RRP4
Host species	Rabbit
Tested applications	Suitable for: WB, IP
Species reactivity	Reacts with: Mouse, Human Predicted to work with: Cow, Dog, Pig, Chimpanzee, Macaque monkey, Rhesus monkey, Gorilla, Opossum, Common marmoset, Orangutan, Xenopus tropicalis, Bat, Elephant 
Immunogen	Synthetic peptide corresponding to Human RRP4 aa 200-300. Database link: Q13868
	 Run BLAST with  Run BLAST with
Positive control	HeLa, Jurkat, NIH 3T3 and 293T whole cell lysates.
General notes	<p>The Life Science industry has been in the grips of a reproducibility crisis for a number of years. Abcam is leading the way in addressing this with our range of recombinant monoclonal antibodies and knockout edited cell lines for gold-standard validation. Please check that this product meets your needs before purchasing.</p> <p>If you have any questions, special requirements or concerns, please send us an inquiry and/or contact our Support team ahead of purchase. Recommended alternatives for this product can be found below, along with publications, customer reviews and Q&As</p>

Properties

Form	Liquid
Storage instructions	Shipped at 4°C. Store at +4°C.
Storage buffer	pH: 7 Preservative: 0.09% Sodium azide Constituent: 99% Tris citrate/phosphate
	pH 7 to 8
Purity	Immunogen affinity purified
Purification notes	ab156698 was affinity purified using an epitope specific to EXOSC2 immobilized on solid support.

Clonality	Polyclonal
Isotype	IgG

Applications

The Abpromise guarantee Our **Abpromise guarantee** covers the use of ab156698 in the following tested applications. The application notes include recommended starting dilutions; optimal dilutions/concentrations should be determined by the end user.

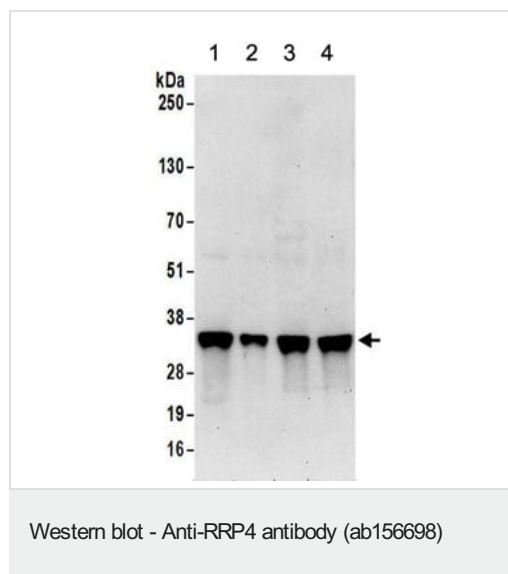
Application	Abreviews	Notes
WB		1/1000 - 1/5000. Predicted molecular weight: 33 kDa.
IP		Use at 2-10 µg/mg of lysate.

Target

Relevance The exosome, present in both the nucleus and cytoplasm of all eukaryotic cells, is a complex of 3'-5' exoribonucleases containing at least nine core components. Recently, it has been demonstrated, mainly by analyses in yeast, that the nuclear exosome is essential for rRNA processing and sn(o)RNA biogenesis. Furthermore, it is involved in the degradation of improperly processed mRNAs. The cytoplasmic exosome participates in normal mRNA turnover and in the degradation of inherently unstable mRNAs that contain AU-rich elements. Therefore, the exosome plays a key role in RNA metabolism.

Cellular localization Cytoplasmic, Exosome and Nuclear

Images



All lanes : Anti-RRP4 antibody (ab156698) at 0.4 µg/ml

Lane 1 : 293T whole cell lysate at 50 µg

Lane 2 : 293T whole cell lysate at 15 µg

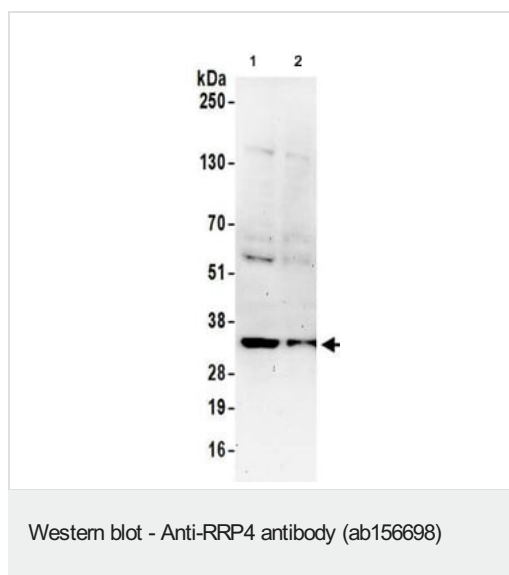
Lane 3 : HeLa whole cell lysate at 50 µg

Lane 4 : Jurkat whole cell lysate at 50 µg

Developed using the ECL technique.

Predicted band size: 33 kDa

Exposure time: 30 seconds



All lanes : Anti-RRP4 antibody (ab156698) at 0.4 µg/ml

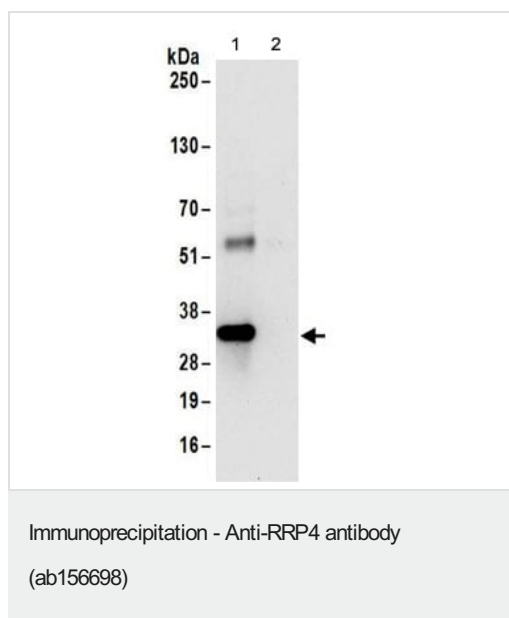
Lane 1 : Mouse NIH 3T3 whole cell lysate at 50 µg

Lane 2 : Mouse NIH 3T3 whole cell lysate at 15 µg

Developed using the ECL technique.

Predicted band size: 33 kDa

Exposure time: 3 minutes



Detection of EXOSC2 in Immunoprecipitates of 293T whole cell lysates (1 mg for IP, 20% of IP loaded) using **ab118807** at 6 µg/mg lysate for IP (Lane 1). For WB detection ab156698 was used at 0.4 µg/ml. Lane 2 represents control IgG IP. Detection: Detection: Chemiluminescence with an exposure time of 30 seconds.

Lane 1 : Alternative anti-RRP4 antibody

Lane 2 : Anti-RRP4 antibody (ab156698) at 0.4 µg/ml

Lane 3 : Control IgG

All lanes : HEK293T whole cell lysate

Please note: All products are "FOR RESEARCH USE ONLY. NOT FOR USE IN DIAGNOSTIC PROCEDURES"

Our Abpromise to you: Quality guaranteed and expert technical support

- Replacement or refund for products not performing as stated on the datasheet
- Valid for 12 months from date of delivery
- Response to your inquiry within 24 hours
- We provide support in Chinese, English, French, German, Japanese and Spanish
- Extensive multi-media technical resources to help you
- We investigate all quality concerns to ensure our products perform to the highest standards

If the product does not perform as described on this datasheet, we will offer a refund or replacement. For full details of the Abpromise,

please visit <https://www.abcam.com/abpromise> or contact our technical team.

Terms and conditions

- Guarantee only valid for products bought direct from Abcam or one of our authorized distributors