


## Product datasheet

# Anti-RRP4 antibody [EPR13606(B)] - C-terminal ab185235

Recombinant RabMAb

4 Images

### Overview

Product name	Anti-RRP4 antibody [EPR13606(B)] - C-terminal
Description	Rabbit monoclonal [EPR13606(B)] to RRP4 - C-terminal
Host species	Rabbit
Tested applications	<b>Suitable for:</b> Flow Cyt (Intra), WB, IHC-P
Species reactivity	<b>Reacts with:</b> Human <b>Predicted to work with:</b> Mouse, Rat 
Immunogen	Synthetic peptide. This information is proprietary to Abcam and/or its suppliers.
Positive control	HepG2, HeLa, 293 and Jurkat cell lysates; Human stomach tissue; HeLa cells.
General notes	<p>This product is a recombinant monoclonal antibody, which offers several advantages including:</p> <ul style="list-style-type: none"> <li>- High batch-to-batch consistency and reproducibility</li> <li>- Improved sensitivity and specificity</li> <li>- Long-term security of supply</li> <li>- Animal-free production</li> </ul> <p>For more information <a href="#">see here</a>.</p> <p>Our RabMAb<sup>®</sup> technology is a patented hybridoma-based technology for making rabbit monoclonal antibodies. For details on our patents, please refer to <a href="#">RabMAb<sup>®</sup> patents</a>.</p>

### Properties

Form	Liquid
Storage instructions	Shipped at 4°C. Store at +4°C short term (1-2 weeks). Upon delivery aliquot. Store at -20°C long term. Avoid freeze / thaw cycle.
Storage buffer	<p>pH: 7.2</p> <p>Preservative: 0.01% Sodium azide</p> <p>Constituents: 59% PBS, 40% Glycerol (glycerin, glycerine), 0.05% BSA</p>
Purity	Protein A purified
Clonality	Monoclonal
Clone number	EPR13606(B)

## Applications

### The Abpromise guarantee

Our **Abpromise guarantee** covers the use of ab185235 in the following tested applications.

The application notes include recommended starting dilutions; optimal dilutions/concentrations should be determined by the end user.

Application	Abreviews	Notes
Flow Cyt (Intra)		1/180. <b>ab172730</b> - Rabbit monoclonal IgG, is suitable for use as an isotype control with this antibody.
WB		1/1000. Detects a band of approximately 33 kDa (predicted molecular weight: 33 kDa).
IHC-P		1/50 - 1/100. Perform heat mediated antigen retrieval with Tris/EDTA buffer pH 9.0 before commencing with IHC staining protocol.

## Target

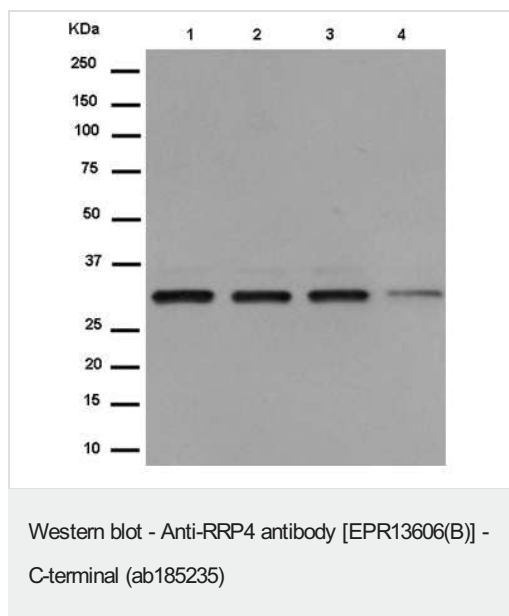
### Relevance

The exosome, present in both the nucleus and cytoplasm of all eukaryotic cells, is a complex of 3'-5' exoribonucleases containing at least nine core components. Recently, it has been demonstrated, mainly by analyses in yeast, that the nuclear exosome is essential for rRNA processing and sn(o)RNA biogenesis. Furthermore, it is involved in the degradation of improperly processed mRNAs. The cytoplasmic exosome participates in normal mRNA turnover and in the degradation of inherently unstable mRNAs that contain AU-rich elements. Therefore, the exosome plays a key role in RNA metabolism.

### Cellular localization

Cytoplasmic, Exosome and Nuclear

## Images



**All lanes :** Anti-RRP4 antibody [EPR13606(B)] - C-terminal (ab185235) at 1/1000 dilution

**Lane 1 :** HepG2 cell lysate

**Lane 2 :** HeLa cell lysate

**Lane 3 :** 293 cell lysate

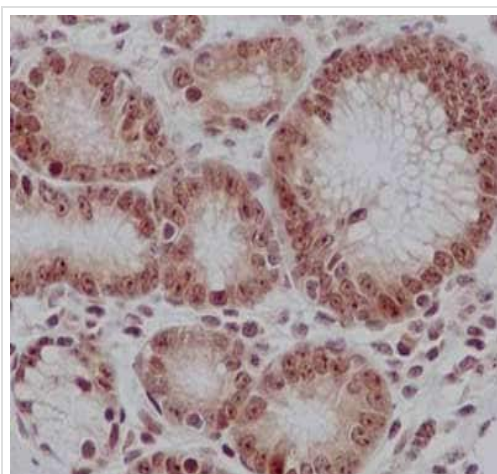
**Lane 4 :** Jurkat cell lysate

Lysates/proteins at 20 µg per lane.

### Secondary

**All lanes :** Goat Anti-Rabbit IgG, (H+L), Peroxidase conjugated at 1/1000 dilution

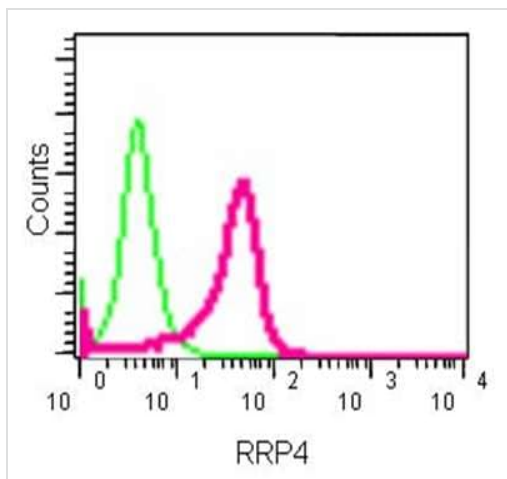
**Predicted band size:** 33 kDa



Immunohistochemistry (Formalin/PFA-fixed paraffin-embedded sections) - Anti-RRP4 antibody [EPR13606(B)] - C-terminal (ab185235)

Immunohistochemical analysis of paraffin-embedded Human stomach tissue labeling RRP4 with ab185235 at 1/100 dilution followed by pre-diluted HRP-conjugated secondary antibody and counter-stained with Hematoxylin.

Perform heat mediated antigen retrieval with EDTA buffer pH 9 before commencing with IHC staining protocol.



Intracellular flow cytometric analysis of HeLa cells (2% paraformaldehyde-fixed) labeling RRP4 with ab185235 at 1/180 dilution (red) or a rabbit IgG (negative) (green), followed by Goat anti rabbit IgG (FITC) secondary at 1/150 dilution.

Flow Cytometry (Intracellular) - Anti-RRP4 antibody  
[EPR13606(B)] - C-terminal (ab185235)

### Why choose a recombinant antibody?



**Research with confidence**  
Consistent and reproducible results



**Long-term and scalable supply**  
Recombinant technology



**Success from the first experiment**  
Confirmed specificity



**Ethical standards compliant**  
Animal-free production

Anti-RRP4 antibody [EPR13606(B)] - C-terminal  
(ab185235)

**Please note:** All products are "FOR RESEARCH USE ONLY. NOT FOR USE IN DIAGNOSTIC PROCEDURES"

### Our Abpromise to you: Quality guaranteed and expert technical support

- Replacement or refund for products not performing as stated on the datasheet
- Valid for 12 months from date of delivery
- Response to your inquiry within 24 hours
- We provide support in Chinese, English, French, German, Japanese and Spanish
- Extensive multi-media technical resources to help you
- We investigate all quality concerns to ensure our products perform to the highest standards

If the product does not perform as described on this datasheet, we will offer a refund or replacement. For full details of the Abpromise, please visit <https://www.abcam.com/abpromise> or contact our technical team.

## Terms and conditions

---

- Guarantee only valid for products bought direct from Abcam or one of our authorized distributors