




Product datasheet

Anti-RRS1 antibody ab188161

[4 References](#) [6 Images](#)

Overview

Product name	Anti-RRS1 antibody
Description	Rabbit polyclonal to RRS1
Host species	Rabbit
Tested applications	Suitable for: IHC-P, ICC/IF, WB
Species reactivity	Reacts with: Human Predicted to work with: Mouse, Rat, Cow 
Immunogen	Recombinant fragment corresponding to Human RRS1 aa 200-300. Database link: Q15050  Run BLAST with  Run BLAST with
Positive control	IHC-P: fallopian tube, pancreas, cerebral cortex and rectum tissue WB: PC-3 and HeLa cell lysate ICC/IF: U-2 OS cells.
General notes	<p>The Life Science industry has been in the grips of a reproducibility crisis for a number of years. Abcam is leading the way in addressing this with our range of recombinant monoclonal antibodies and knockout edited cell lines for gold-standard validation. Please check that this product meets your needs before purchasing.</p> <p>If you have any questions, special requirements or concerns, please send us an inquiry and/or contact our Support team ahead of purchase. Recommended alternatives for this product can be found below, along with publications, customer reviews and Q&As</p>

Properties

Form	Liquid
Storage instructions	Shipped at 4°C. Store at +4°C short term (1-2 weeks). Upon delivery aliquot. Store at -20°C long term. Avoid freeze / thaw cycle.
Storage buffer	pH: 7.20 Preservative: 0.02% Sodium azide Constituents: 59% PBS, 40% Glycerol (glycerin, glycerine)
Purity	Immunogen affinity purified
Clonality	Polyclonal
Isotype	IgG

Applications

The Abpromise guarantee

Our **Abpromise guarantee** covers the use of ab188161 in the following tested applications.

The application notes include recommended starting dilutions; optimal dilutions/concentrations should be determined by the end user.

Application	Abreviews	Notes
IHC-P		1/1000 - 1/2500. Perform heat mediated antigen retrieval with citrate buffer pH 6 before commencing with IHC staining protocol.
ICC/IF		Use a concentration of 0.25 - 2 µg/ml.
WB		Use a concentration of 0.04 - 0.4 µg/ml. Predicted molecular weight: 41 kDa.

Target

Function

Involved in ribosome biogenesis.

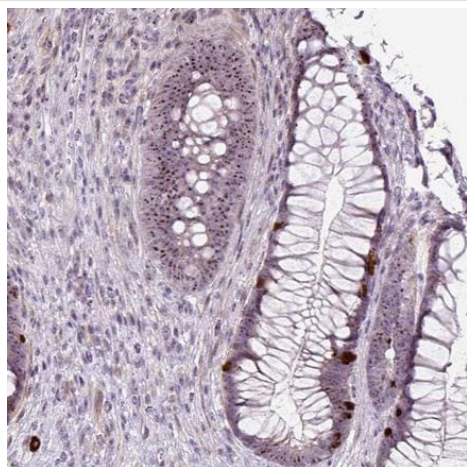
Sequence similarities

Belongs to the RRS1 family.

Cellular localization

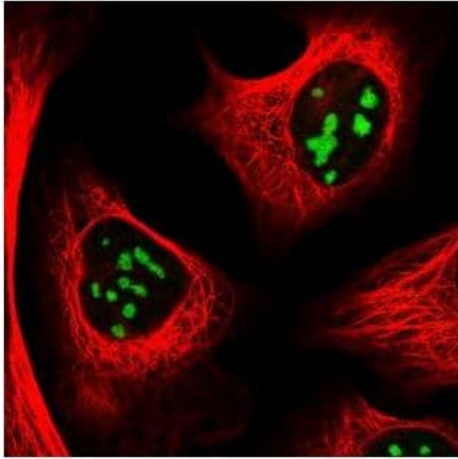
Nucleus > nucleolus.

Images



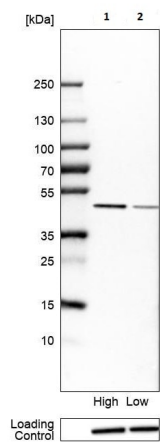
Immunohistochemical analysis of human rectum tissue labeling RRS1 with ab188161 at 1/1000 dilution.

Immunohistochemistry (Formalin/PFA-fixed paraffin-embedded sections) - Anti-RRS1 antibody (ab188161)



Immunocytochemistry/ Immunofluorescence - Anti-RRS1 antibody (ab188161)

Immunofluorescence analysis of Human cell line U-2 OS labeling RRS1 with ab188161 at 4 $\mu\text{g/ml}$.



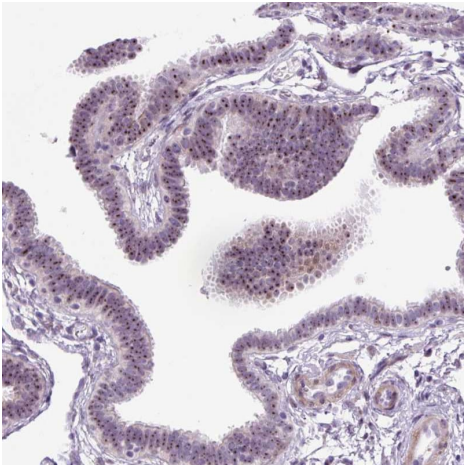
Western blot - Anti-RRS1 antibody (ab188161)

All lanes : Anti-RRS1 antibody (ab188161) at 0.4 $\mu\text{g/ml}$

Lane 1 : PC-3 cell lysate

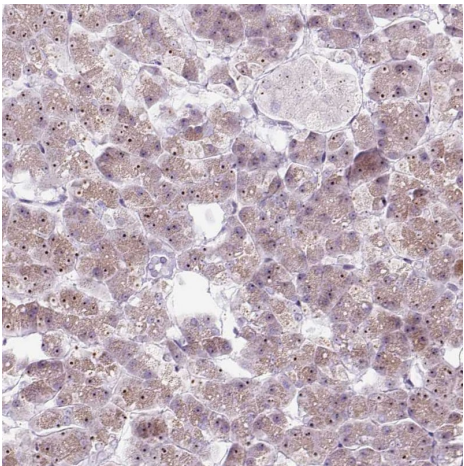
Lane 2 : HeLa cell lysate

Predicted band size: 41 kDa



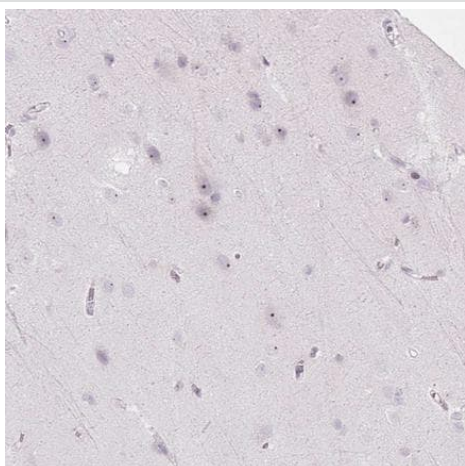
Immunohistochemical analysis of human fallopian tube tissue labeling RRS1 with ab188161 at 1/1000 dilution.

Immunohistochemistry (Formalin/PFA-fixed paraffin-embedded sections) - Anti-RRS1 antibody (ab188161)



Immunohistochemical analysis of human pancreas tissue labeling RRS1 with ab188161 at 1/1000 dilution.

Immunohistochemistry (Formalin/PFA-fixed paraffin-embedded sections) - Anti-RRS1 antibody (ab188161)



Immunohistochemical analysis of human cerebral cortex tissue labeling RRS1 with ab188161 at 1/1000 dilution.

Immunohistochemistry (Formalin/PFA-fixed paraffin-embedded sections) - Anti-RRS1 antibody (ab188161)

Please note: All products are "FOR RESEARCH USE ONLY. NOT FOR USE IN DIAGNOSTIC PROCEDURES"

Our Abpromise to you: Quality guaranteed and expert technical support

- Replacement or refund for products not performing as stated on the datasheet
- Valid for 12 months from date of delivery
- Response to your inquiry within 24 hours
- We provide support in Chinese, English, French, German, Japanese and Spanish
- Extensive multi-media technical resources to help you
- We investigate all quality concerns to ensure our products perform to the highest standards

If the product does not perform as described on this datasheet, we will offer a refund or replacement. For full details of the Abpromise, please visit <https://www.abcam.com/abpromise> or contact our technical team.

Terms and conditions

- Guarantee only valid for products bought direct from Abcam or one of our authorized distributors