


## Product datasheet

# Anti-rSec6 antibody [EPR10812] ab156568

Recombinant RabMAb

★★★★★ [2 Abreviews](#) [1 References](#) [6 Images](#)

### Overview

<b>Product name</b>	Anti-rSec6 antibody [EPR10812]
<b>Description</b>	Rabbit monoclonal [EPR10812] to rSec6
<b>Host species</b>	Rabbit
<b>Tested applications</b>	<b>Suitable for:</b> WB, IP, IHC-P, ICC/IF <b>Unsuitable for:</b> Flow Cyt
<b>Species reactivity</b>	<b>Reacts with:</b> Human <b>Predicted to work with:</b> Mouse, Rat 
<b>Immunogen</b>	Synthetic peptide within Human rSec6. The exact sequence is proprietary. Database link: <a href="#">O60645</a>
<b>Positive control</b>	HeLa, MCF7, HepG2, and fetal brain lysates, Human kidney and Human pancreas tissues, HeLa cells
<b>General notes</b>	This product is a recombinant monoclonal antibody, which offers several advantages including: <ul style="list-style-type: none"><li>- High batch-to-batch consistency and reproducibility</li><li>- Improved sensitivity and specificity</li><li>- Long-term security of supply</li><li>- Animal-free production</li></ul> For more information <a href="#">see here</a> . Our RabMAb <sup>®</sup> technology is a patented hybridoma-based technology for making rabbit monoclonal antibodies. For details on our patents, please refer to <a href="#">RabMAb<sup>®</sup> patents</a> .

### Properties

<b>Form</b>	Liquid
<b>Storage instructions</b>	Shipped at 4°C. Upon delivery aliquot and store at -20°C. Avoid freeze / thaw cycles.
<b>Storage buffer</b>	pH: 7.2 Preservative: 0.01% Sodium azide Constituents: 59% PBS, 40% Glycerol (glycerin, glycerine), 0.5% BSA
<b>Purity</b>	Protein A purified
<b>Clonality</b>	Monoclonal

Clone number                   EPR10812  
Isotype                            IgG

## Applications

**The Abpromise guarantee**           Our **Abpromise guarantee** covers the use of ab156568 in the following tested applications.

The application notes include recommended starting dilutions; optimal dilutions/concentrations should be determined by the end user.

Application	Abreviews	Notes
WB	★★★★★ (2)	1/1000 - 1/10000. Detects a band of approximately 85 kDa (predicted molecular weight: 87 kDa).
IP		1/10 - 1/100.
IHC-P		1/100 - 1/250. Perform heat mediated antigen retrieval with citrate buffer pH 6 before commencing with IHC staining protocol.
ICC/IF		1/100 - 1/250.

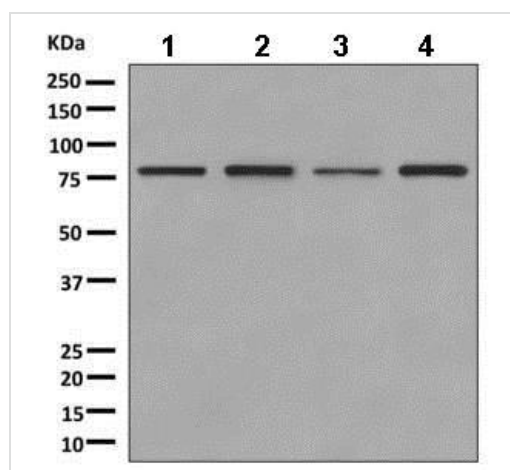
**Application notes**                    Is unsuitable for Flow Cyt.

## Target

**Function**                               Component of the exocyst complex involved in the docking of exocytic vesicles with fusion sites on the plasma membrane.

**Sequence similarities**                Belongs to the SEC6 family.

## Images



Western blot - Anti-rSec6 antibody [EPR10812] (ab156568)

**All lanes** : Anti-rSec6 antibody [EPR10812] (ab156568) at 1/1000 dilution

**Lane 1** : HeLa cell lysate

**Lane 2** : MCF7 cell lysate

**Lane 3** : HepG2 cell lysate

**Lane 4** : fetal brain tissue lysate

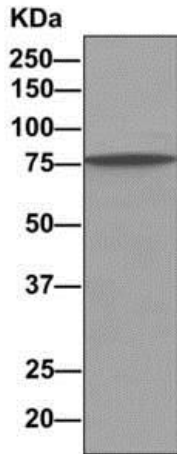
Lysates/proteins at 10 µg per lane.

### Secondary

**All lanes** : HRP labelled goat anti-rabbit at 1/2000 dilution

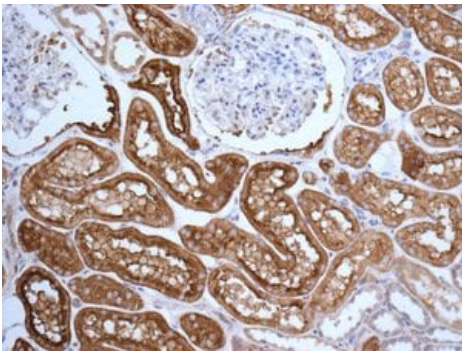
**Predicted band size:** 87 kDa

**Observed band size:** 85 kDa



Immunoprecipitation - Anti-rSec6 antibody  
[EPR10812] (ab156568)

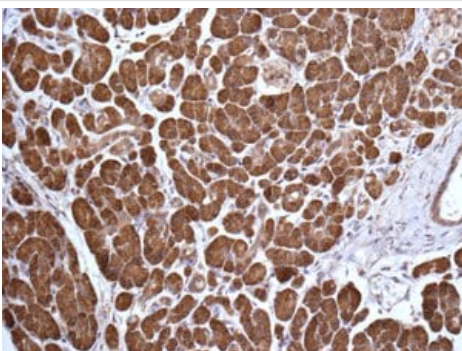
Immunoprecipitation. ab156568 at 1/1000 staining rSec6 in MCF7 lysate immunoprecipitated using ab156568 at 1/10. Predicted band size : 85 kDa.



Immunohistochemistry (Formalin/PFA-fixed paraffin-embedded sections) - Anti-rSec6 antibody  
[EPR10812] (ab156568)

Immunohistochemical analysis of paraffin embedded Human kidney tissue labeling rSec6 with ab156568 antibody at 1/100.

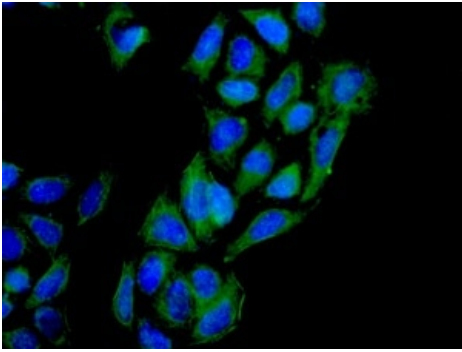
Perform heat mediated antigen retrieval with citrate buffer pH 6 before commencing with IHC staining protocol.



Immunohistochemistry (Formalin/PFA-fixed paraffin-embedded sections) - Anti-rSec6 antibody  
[EPR10812] (ab156568)

Immunohistochemical analysis of paraffin embedded Human pancreas tissue labeling rSec6 with ab156568 antibody at 1/100.

Perform heat mediated antigen retrieval with citrate buffer pH 6 before commencing with IHC staining protocol.



Immunofluorescent analysis of HeLa cells labeling rSec6 with ab156568 at 1/100.

Immunocytochemistry/ Immunofluorescence - Anti-rSec6 antibody [EPR10812] (ab156568)

Why choose a recombinant antibody?



**Research with confidence**  
Consistent and reproducible results



**Long-term and scalable supply**  
Recombinant technology



**Success from the first experiment**  
Confirmed specificity



**Ethical standards compliant**  
Animal-free production

Anti-rSec6 antibody [EPR10812] (ab156568)

**Please note:** All products are "FOR RESEARCH USE ONLY. NOT FOR USE IN DIAGNOSTIC PROCEDURES"

### Our Abpromise to you: Quality guaranteed and expert technical support

- Replacement or refund for products not performing as stated on the datasheet
- Valid for 12 months from date of delivery
- Response to your inquiry within 24 hours
- We provide support in Chinese, English, French, German, Japanese and Spanish
- Extensive multi-media technical resources to help you
- We investigate all quality concerns to ensure our products perform to the highest standards

If the product does not perform as described on this datasheet, we will offer a refund or replacement. For full details of the Abpromise, please visit <https://www.abcam.com/abpromise> or contact our technical team.

### Terms and conditions

- Guarantee only valid for products bought direct from Abcam or one of our authorized distributors

