


## Product datasheet

### Anti-Rsk 2 / MAPKAP Kinase 1b antibody [Y82] ab32062

KO **VALIDATED** Recombinant RabMAb<sup>®</sup>

[2 References](#) [5 Images](#)

#### Overview

<b>Product name</b>	Anti-Rsk 2 / MAPKAP Kinase 1b antibody [Y82]
<b>Description</b>	Rabbit monoclonal [Y82] to Rsk 2 / MAPKAP Kinase 1b
<b>Host species</b>	Rabbit
<b>Specificity</b>	This antibody is specific for human Rsk 2 / MAPKAP Kinase 1b.
<b>Tested applications</b>	<b>Suitable for:</b> Flow Cyt (Intra), WB, IHC-P <b>Unsuitable for:</b> ICC/IF
<b>Species reactivity</b>	<b>Reacts with:</b> Human <b>Predicted to work with:</b> Mouse, Rat 
<b>Immunogen</b>	Synthetic peptide within Human Rsk 2/ MAPKAP Kinase 1b (C terminal). The exact sequence is proprietary.
<b>Epitope</b>	ab32062 reacts with an epitope located in the C terminal region of Rsk 2 / MAPKAP Kinase 1b.
<b>Positive control</b>	Flow Cyt (intra): MCF7 cells.
<b>General notes</b>	This product is a recombinant monoclonal antibody, which offers several advantages including: <ul style="list-style-type: none"> <li>- High batch-to-batch consistency and reproducibility</li> <li>- Improved sensitivity and specificity</li> <li>- Long-term security of supply</li> <li>- Animal-free production</li> </ul> For more information <a href="#">see here</a> . Our RabMAb <sup>®</sup> technology is a patented hybridoma-based technology for making rabbit monoclonal antibodies. For details on our patents, please refer to <a href="#">RabMAb<sup>®</sup> patents</a> .

#### Properties

<b>Form</b>	Liquid
<b>Storage instructions</b>	Shipped at 4°C. Store at +4°C short term (1-2 weeks). Upon delivery aliquot. Store at -20°C. Avoid freeze / thaw cycle.
<b>Storage buffer</b>	pH: 7.20 Preservative: 0.01% Sodium azide Constituents: 59% PBS, 40% Glycerol (glycerin, glycerine), 0.05% BSA

<b>Purity</b>	Protein A purified
<b>Clonality</b>	Monoclonal
<b>Clone number</b>	Y82
<b>Isotype</b>	IgG

## Applications

**The Abpromise guarantee** Our **Abpromise guarantee** covers the use of ab32062 in the following tested applications. The application notes include recommended starting dilutions; optimal dilutions/concentrations should be determined by the end user.

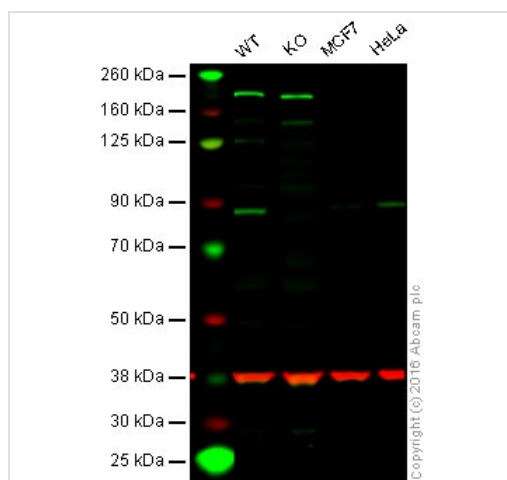
Application	Abreviews	Notes
<b>Flow Cyt (Intra)</b>		1/100 - 1/1000. <b>ab172730</b> - Rabbit monoclonal IgG, is suitable for use as an isotype control with this antibody.
<b>WB</b>		1/1000. Predicted molecular weight: 90 kDa.
<b>IHC-P</b>		Use at an assay dependent concentration. Perform heat mediated antigen retrieval with citrate buffer pH 6 before commencing with IHC staining protocol.

**Application notes** Is unsuitable for ICC/IF.

## Target

<b>Function</b>	Serine/threonine kinase that may play a role in mediating the growth-factor and stress induced activation of the transcription factor CREB.
<b>Tissue specificity</b>	Expressed in many tissues, highest levels in skeletal muscle.
<b>Involvement in disease</b>	Defects in RPS6KA3 are the cause of Coffin-Lowry syndrome (CLS) [MIM:303600]; an X-linked dominant disorder characterized by severe mental retardation with facial and digital dysmorphisms, and progressive skeletal deformations.
<b>Sequence similarities</b>	Belongs to the protein kinase superfamily. AGC Ser/Thr protein kinase family. S6 kinase subfamily. Contains 1 AGC-kinase C-terminal domain. Contains 2 protein kinase domains.
<b>Post-translational modifications</b>	Autophosphorylated on Ser-386, as part of the activation process. Ser-227 phosphorylation promotes Ser-386 phosphorylation and leads to basal activation. Full activation by growth factors requires additional phosphorylation on Ser-369.

## Images



Western blot - Anti-Rsk 2 / MAPKAP Kinase 1b antibody [Y82] (ab32062)

**Lane 1:** Wild-type HAP1 cell lysate (40 µg)

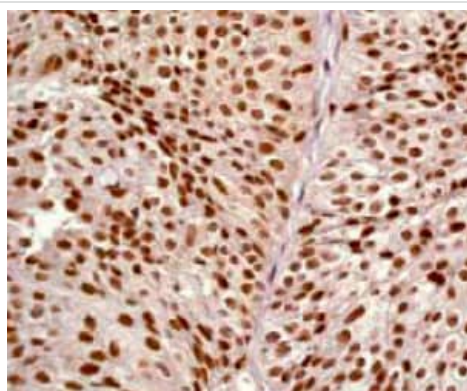
**Lane 2:** Rsk 2 / MAPKAP Kinase 1b knockout HAP1 cell lysate (40 µg)

**Lane 3:** MCF7 cell lysate (40 µg)

**Lane 4:** HeLa cell lysate (40 µg)

**Lanes 1 - 4:** Merged signal (red and green). Green - ab32062 observed at 88 kDa. Red - loading control, **ab8245**, observed at 37 kDa.

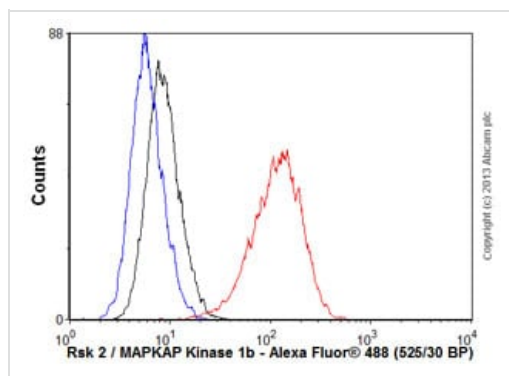
ab32062 was shown to recognize Rsk 2 / MAPKAP Kinase 1b when Rsk 2 / MAPKAP Kinase 1b knockout samples were used, along with additional cross-reactive bands. Wild-type and Rsk 2 / MAPKAP Kinase 1b knockout samples were subjected to SDS-PAGE. Ab32062 and **ab8245** (loading control to GAPDH) were diluted at 1/500 and 1/10000 dilution respectively and incubated overnight at 4°C. Blots were developed with Goat anti-Rabbit IgG H&L (IRDye® 800CW) preadsorbed **ab216773** and Goat anti-Mouse IgG H&L (IRDye® 680RD) preadsorbed **ab216776** secondary antibodies at 1/10000 dilution for 1 hour at room temperature before imaging.



Immunohistochemistry (Formalin/PFA-fixed paraffin-embedded sections) - Anti-Rsk 2 / MAPKAP Kinase 1b antibody [Y82] (ab32062)

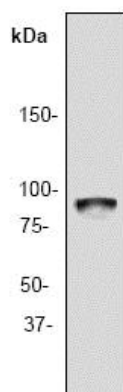
ab32062 at a 1:250 - 1:500 dilution staining Rsk 2 / MAPKAP Kinase 1b in human urinary bladder carcinoma, using Immunohistochemistry, Paraffin Embedded Tissue.

Perform heat mediated antigen retrieval with citrate buffer pH 6 before commencing with IHC staining protocol.



Flow Cytometry (Intracellular) - Anti-Rsk 2 /  
MAPKAP Kinase 1b antibody [Y82] (ab32062)

Overlay histogram showing MCF7 cells stained with ab32062 (red line). The cells were fixed with 4% paraformaldehyde (10 min) and then permeabilized with 0.1% PBS-Tween for 20 min. The cells were then incubated in 1x PBS / 10% normal goat serum / 0.3M glycine to block non-specific protein-protein interactions followed by the antibody (ab32062, 1/1000 dilution) for 30 min at 22°C. The secondary antibody used was Alexa Fluor® 488 goat anti-rabbit IgG (H&L) (**ab150077**) at 1/2000 dilution for 30 min at 22°C. Isotype control antibody (black line) was rabbit IgG (monoclonal) (0.1µg/1x10<sup>6</sup> cells) used under the same conditions. Unlabelled sample (blue line) was also used as a control. Acquisition of >5,000 events were collected using a 20mW Argon ion laser (488nm) and 525/30 bandpass filter. This antibody gave a positive signal in MCF7 cells fixed with 80% methanol (5 min)/permeabilized with 0.1% PBS-Tween for 20 min used under the same conditions.



Western blot - Anti-Rsk 2 / MAPKAP Kinase 1b  
antibody [Y82] (ab32062)

Anti-Rsk 2 / MAPKAP Kinase 1b antibody [Y82] (ab32062) at  
1/1000 dilution + MCF7 cell lysate

**Predicted band size:** 90 kDa

**Observed band size:** 90 kDa

### Why choose a recombinant antibody?



**Research with confidence**  
Consistent and reproducible results



**Long-term and scalable supply**  
Recombinant technology



**Success from the first experiment**  
Confirmed specificity



**Ethical standards compliant**  
Animal-free production

Anti-Rsk 2 / MAPKAP Kinase 1b antibody [Y82]  
(ab32062)

**Please note:** All products are "FOR RESEARCH USE ONLY. NOT FOR USE IN DIAGNOSTIC PROCEDURES"

### Our Abpromise to you: Quality guaranteed and expert technical support

---

- Replacement or refund for products not performing as stated on the datasheet
- Valid for 12 months from date of delivery
- Response to your inquiry within 24 hours
- We provide support in Chinese, English, French, German, Japanese and Spanish
- Extensive multi-media technical resources to help you
- We investigate all quality concerns to ensure our products perform to the highest standards

If the product does not perform as described on this datasheet, we will offer a refund or replacement. For full details of the Abpromise, please visit <https://www.abcam.com/abpromise> or contact our technical team.

### Terms and conditions

---

- Guarantee only valid for products bought direct from Abcam or one of our authorized distributors