




Product datasheet

Anti-RSPO3 antibody ab233113

[1 References](#) [7 Images](#)

Overview

Product name	Anti-RSPO3 antibody
Description	Rabbit polyclonal to RSPO3
Host species	Rabbit
Tested applications	Suitable for: WB, IHC-P
Species reactivity	Reacts with: Human, Pig Predicted to work with: Cow 
Immunogen	Recombinant full length protein (His-T7-tag) corresponding to Human RSPO3 aa 1 to the C-terminus. (Expressed in E.coli). Database link: Q9BXY4  Run BLAST with  Run BLAST with
Positive control	IHC-P: Human breast cancer, pancreatic cancer, glioma, liver and bile duct cancer tissues. WB: Pig small intestine lysate; Recombinant human RSPO3 protein.
General notes	<p>The Life Science industry has been in the grips of a reproducibility crisis for a number of years. Abcam is leading the way in addressing this with our range of recombinant monoclonal antibodies and knockout edited cell lines for gold-standard validation. Please check that this product meets your needs before purchasing.</p> <p>If you have any questions, special requirements or concerns, please send us an inquiry and/or contact our Support team ahead of purchase. Recommended alternatives for this product can be found below, along with publications, customer reviews and Q&As</p>

Properties

Form	Liquid
Storage instructions	Shipped at 4°C. Store at +4°C short term (1-2 weeks). Upon delivery aliquot. Store at -20°C long term. Avoid freeze / thaw cycle.
Storage buffer	pH: 7.40 Preservative: 0.011% Proclin 300 Constituents: 55.77% Glycerol (glycerin, glycerine), 44.219% PBS
Purity	Immunogen affinity purified
Purification notes	ab233113 was purified by antigen-specific affinity chromatography followed by Protein A affinity chromatography.

Clonality	Polyclonal
Isotype	IgG

Applications

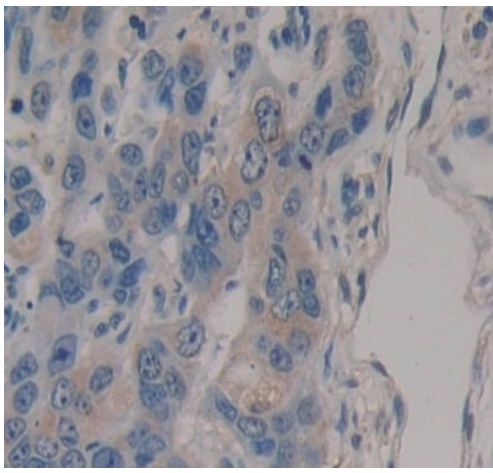
The Abpromise guarantee Our **Abpromise guarantee** covers the use of ab233113 in the following tested applications. The application notes include recommended starting dilutions; optimal dilutions/concentrations should be determined by the end user.

Application	Abreviews	Notes
WB		Use a concentration of 0.2 - 2 µg/ml. Predicted molecular weight: 31 kDa.
IHC-P		Use a concentration of 5 - 20 µg/ml.

Target

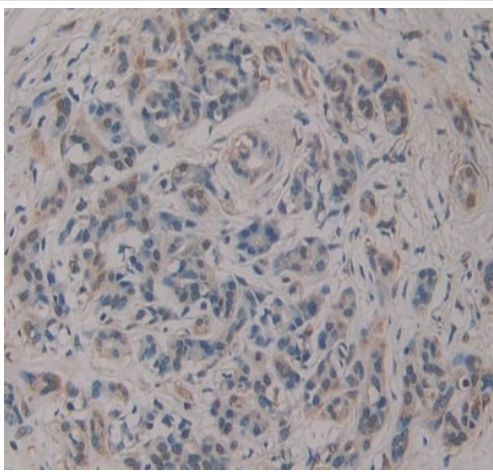
Function	Activator of the beta-catenin signaling cascade, leading to TCF-dependent gene activation. Acts both in the canonical Wnt/beta-catenin-dependent pathway, possibly via a direct interaction with Wnt proteins, and in a Wnt-independent beta catenin pathway through a receptor signaling pathway that may not use frizzled/LRP receptors. Acts as a ligand for frizzled FZD8 and LRP6. May negatively regulate the TGF-beta pathway.
Tissue specificity	Ubiquitously expressed. Expressed at higher level in placenta, small intestine, fetal thymus and lymph node.
Sequence similarities	Belongs to the R-spondin family. Contains 2 FU (furin-like) repeats. Contains 1 TSP type-1 domain.
Domain	The FU repeats are required for activation and stabilization of beta-catenin.
Cellular localization	Secreted.

Images



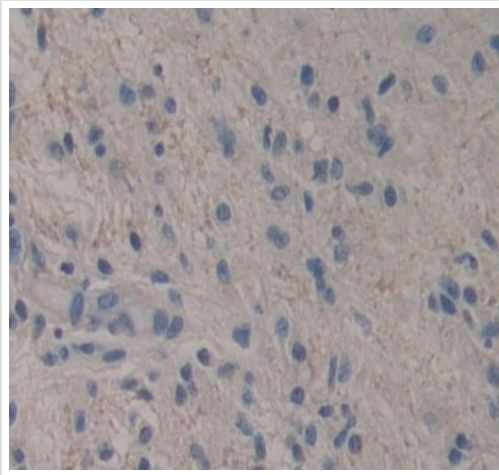
Immunohistochemistry (Formalin/PFA-fixed paraffin-embedded sections) - Anti-RSPO3 antibody (ab233113)

Paraffin-embedded human breast cancer tissue stained for RSPO3 using ab233113 at 20 µg/ml in immunohistochemical analysis. DAB staining.



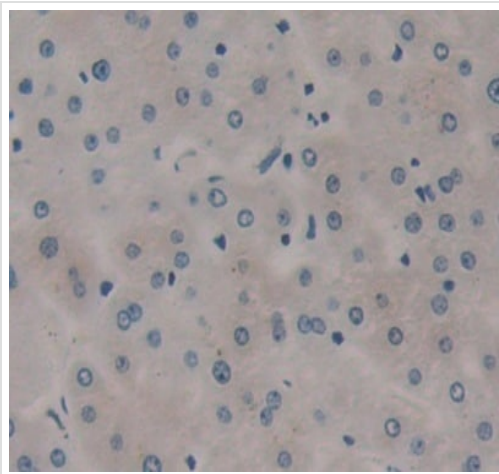
Immunohistochemistry (Formalin/PFA-fixed paraffin-embedded sections) - Anti-RSPO3 antibody (ab233113)

Paraffin-embedded human pancreatic cancer tissue stained for RSPO3 using ab233113 at 20 µg/ml in immunohistochemical analysis. DAB staining.



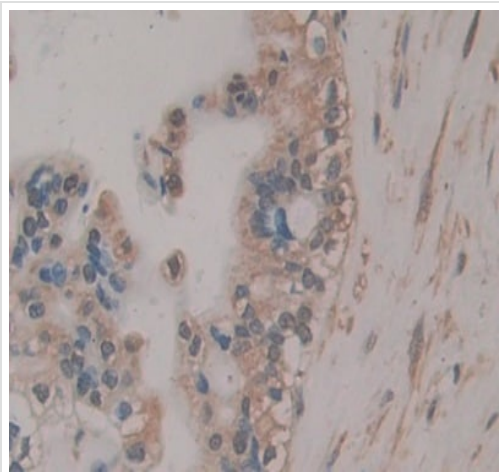
Paraffin-embedded human glioma tissue stained for RSPO3 using ab233113 at 20 µg/ml in immunohistochemical analysis. DAB staining.

Immunohistochemistry (Formalin/PFA-fixed paraffin-embedded sections) - Anti-RSPO3 antibody (ab233113)



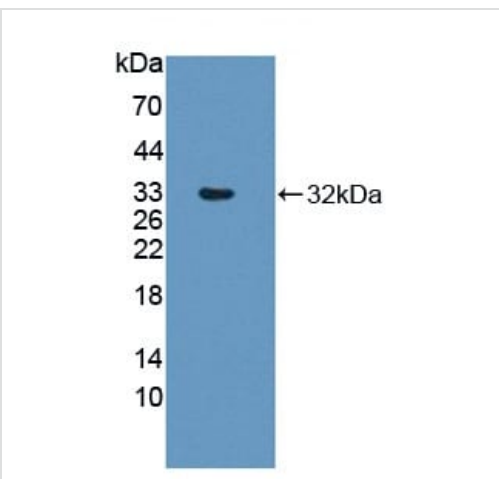
Paraffin-embedded human liver tissue stained for RSPO3 using ab233113 at 20 µg/ml in immunohistochemical analysis. DAB staining.

Immunohistochemistry (Formalin/PFA-fixed paraffin-embedded sections) - Anti-RSPO3 antibody (ab233113)



Immunohistochemistry (Formalin/PFA-fixed paraffin-embedded sections) - Anti-RSPO3 antibody (ab233113)

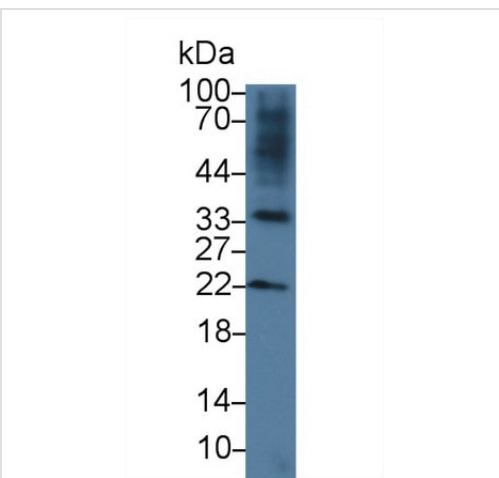
Paraffin-embedded human bile duct cancer tissue stained for RSPO3 using ab233113 at 20 $\mu\text{g/ml}$ in immunohistochemical analysis. DAB staining.



Western blot - Anti-RSPO3 antibody (ab233113)

Anti-RSPO3 antibody (ab233113) at 2 $\mu\text{g/ml}$ + Recombinant human RSPO3 protein

Predicted band size: 31 kDa



Western blot - Anti-RSPO3 antibody (ab233113)

Anti-RSPO3 antibody (ab233113) at 2 $\mu\text{g/ml}$ + Pig small intestine lysate

Predicted band size: 31 kDa

Our Abpromise to you: Quality guaranteed and expert technical support

- Replacement or refund for products not performing as stated on the datasheet
- Valid for 12 months from date of delivery
- Response to your inquiry within 24 hours

- We provide support in Chinese, English, French, German, Japanese and Spanish
- Extensive multi-media technical resources to help you
- We investigate all quality concerns to ensure our products perform to the highest standards

If the product does not perform as described on this datasheet, we will offer a refund or replacement. For full details of the Abpromise, please visit <https://www.abcam.com/abpromise> or contact our technical team.

Terms and conditions

- Guarantee only valid for products bought direct from Abcam or one of our authorized distributors