

Product datasheet

Anti-RSRC1 antibody ab106650

[2 References](#) [1 Image](#)

Overview

Product name	Anti-RSRC1 antibody
Description	Rabbit polyclonal to RSRC1
Host species	Rabbit
Specificity	Two isoforms of RSRC1 are known to exist; ab106650 will detect both.
Tested applications	Suitable for: WB
Species reactivity	Reacts with: Human
Immunogen	A 19 amino acid synthetic peptide near the C terminus of Human RSRC1 (NP_057709).
Positive control	WB: HepG2 cell lysate;
General notes	<p>The Life Science industry has been in the grips of a reproducibility crisis for a number of years. Abcam is leading the way in addressing this with our range of recombinant monoclonal antibodies and knockout edited cell lines for gold-standard validation. Please check that this product meets your needs before purchasing.</p> <p>If you have any questions, special requirements or concerns, please send us an inquiry and/or contact our Support team ahead of purchase. Recommended alternatives for this product can be found below, along with publications, customer reviews and Q&As</p>

Properties

Form	Liquid
Storage instructions	Shipped at 4°C. Store at 4°C (stable for up to 12 months).
Storage buffer	pH: 7.2 Preservative: 0.02% Sodium azide Constituent: PBS
Purity	Immunogen affinity purified
Clonality	Polyclonal
Isotype	IgG

Applications

The **Abpromise guarantee** Our **Abpromise guarantee** covers the use of ab106650 in the following tested applications.

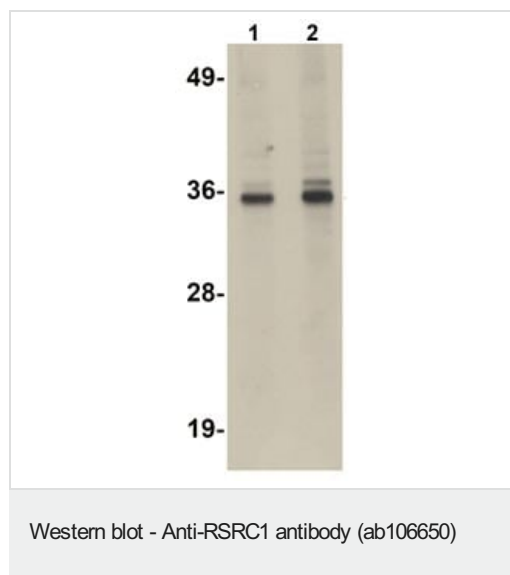
The application notes include recommended starting dilutions; optimal dilutions/concentrations should be determined by the end user.

Application	Abreviews	Notes
WB		Use a concentration of 1 - 2 µg/ml. Predicted molecular weight: 39 kDa.

Target

Function	Plays a role in pre-mRNA splicing. Involved in both constitutive and alternative pre-mRNA splicing. May have a role in the recognition of the 3' splice site during the second step of splicing.
Post-translational modifications	Phosphorylated.
Cellular localization	Nucleus. Nucleus speckle. Cytoplasm. Shuttles between the nucleus and cytoplasm.

Images



Lane 1 : Anti-RSRC1 antibody (ab106650) at 1 µg/ml

Lane 2 : Anti-RSRC1 antibody (ab106650) at 2 µg/ml

All lanes : HepG2 cell lysate

Lysates/proteins at 15 µg per lane.

Predicted band size: 39 kDa

Please note: All products are "FOR RESEARCH USE ONLY. NOT FOR USE IN DIAGNOSTIC PROCEDURES"

Our Abpromise to you: Quality guaranteed and expert technical support

- Replacement or refund for products not performing as stated on the datasheet
- Valid for 12 months from date of delivery
- Response to your inquiry within 24 hours
- We provide support in Chinese, English, French, German, Japanese and Spanish
- Extensive multi-media technical resources to help you
- We investigate all quality concerns to ensure our products perform to the highest standards

If the product does not perform as described on this datasheet, we will offer a refund or replacement. For full details of the Abpromise,

please visit <https://www.abcam.com/abpromise> or contact our technical team.

Terms and conditions

- Guarantee only valid for products bought direct from Abcam or one of our authorized distributors