


Product datasheet

Anti-RTR antibody ab38816

★★★★★ [5 Abreviews](#) [4 References](#) [2 Images](#)

Overview

Product name	Anti-RTR antibody
Description	Rabbit polyclonal to RTR
Host species	Rabbit
Tested applications	Suitable for: WB
Species reactivity	Reacts with: Human Predicted to work with: Mouse, Rat 
Immunogen	Synthetic peptide corresponding to Human RTR aa 150-250 conjugated to keyhole limpet haemocyanin. (Peptide available as ab38815)
General notes	<p>The Life Science industry has been in the grips of a reproducibility crisis for a number of years. Abcam is leading the way in addressing this with our range of recombinant monoclonal antibodies and knockout edited cell lines for gold-standard validation. Please check that this product meets your needs before purchasing.</p> <p>If you have any questions, special requirements or concerns, please send us an inquiry and/or contact our Support team ahead of purchase. Recommended alternatives for this product can be found below, along with publications, customer reviews and Q&As</p>

Properties

Form	Liquid
Storage instructions	Shipped at 4°C. Store at +4°C short term (1-2 weeks). Upon delivery aliquot. Store at -20°C or -80°C. Avoid freeze / thaw cycle.
Storage buffer	<p>pH: 7.40</p> <p>Preservative: 0.02% Sodium azide</p> <p>Constituent: PBS</p> <p>Batches of this product that have a concentration < 1mg/ml may have BSA added as a stabilising agent. If you would like information about the formulation of a specific lot, please contact our scientific support team who will be happy to help.</p>
Purity	Immunogen affinity purified
Clonality	Polyclonal

Isotype

IgG

Applications

The Abpromise guarantee

Our **Abpromise guarantee** covers the use of ab38816 in the following tested applications.

The application notes include recommended starting dilutions; optimal dilutions/concentrations should be determined by the end user.

Application	Abreviews	Notes
WB	★★★★★ (1)	1/250. Detects a band of approximately 53 kDa (predicted molecular weight: 54 kDa).

Target

Function

Orphan nuclear receptor. Binds to a response element containing the sequence 5'-TCAAGGTCA-3'. May be involved in the regulation of gene expression in germ cell development during gametogenesis.

Tissue specificity

Shows highest expression in the germ cells of the adult testis.

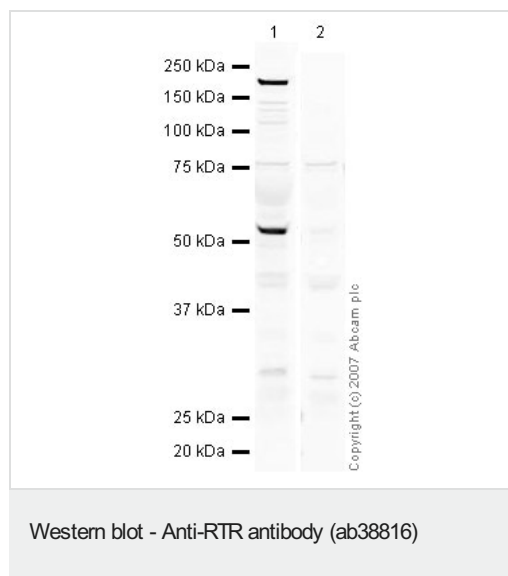
Sequence similarities

Belongs to the nuclear hormone receptor family. NR6 subfamily.
Contains 1 nuclear receptor DNA-binding domain.

Cellular localization

Nucleus.

Images



All lanes : Anti-RTR antibody (ab38816) at 1/250 dilution

Lane 1 : Human testis tissue lysate - total protein (**ab30257**)

Lane 2 : Human testis tissue lysate - total protein (**ab30257**) with Human RTR peptide (**ab38815**) at 1 µg/ml

Lysates/proteins at 20 µg per lane.

Secondary

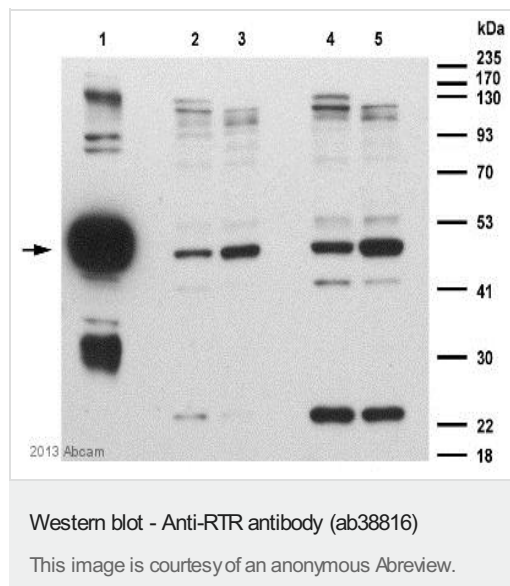
All lanes : IRDye 680 Conjugated Goat Anti-Rabbit IgG (H+L) at 1/10000 dilution

Performed under reducing conditions.

Predicted band size: 54 kDa

Observed band size: 53 kDa

Additional bands at: 230 kDa (possible cross reactivity)



All lanes : Anti-RTR antibody (ab38816) at 1/80 dilution

Lane 1 : Cell extract of HAmGCNF expressing COS-1 cells.

Lane 2 : Nuclear extract of Dox+ control mES cells treated with RA for 1.5 days. at 20 µg

Lane 3 : Nuclear extract of Dox- biohGCNF expressing mES cells treated with RA for 1.5 days. at 20 µg

Lane 4 : Nuclear extract of Dox+ control mES cells treated with RA for 1.5 days. at 40 µg

Lane 5 : Nuclear extract of Dox- biohGCNF expressing mES cells treated with RA for 1.5 days. at 40 µg

Secondary

All lanes : Goat anti-rabbit (Santa Cruz) at 1/2500 dilution

Developed using the ECL technique.

Performed under reducing conditions.

Predicted band size: 54 kDa

Observed band size: 50 kDa

Exposure time: 5 minutes

Please note: All products are "FOR RESEARCH USE ONLY. NOT FOR USE IN DIAGNOSTIC PROCEDURES"

Our Abpromise to you: Quality guaranteed and expert technical support

- Replacement or refund for products not performing as stated on the datasheet
- Valid for 12 months from date of delivery
- Response to your inquiry within 24 hours
- We provide support in Chinese, English, French, German, Japanese and Spanish
- Extensive multi-media technical resources to help you
- We investigate all quality concerns to ensure our products perform to the highest standards

If the product does not perform as described on this datasheet, we will offer a refund or replacement. For full details of the Abpromise, please visit <https://www.abcam.com/abpromise> or contact our technical team.

Terms and conditions

- Guarantee only valid for products bought direct from Abcam or one of our authorized distributors