


Anti-RUNX1T1/ETO/CDR antibody ab124269

[3 References](#) [2 Images](#)

Overview

| | |
|----------------------------|---|
| Product name | Anti-RUNX1T1/ETO/CDR antibody |
| Description | Rabbit polyclonal to RUNX1T1/ETO/CDR |
| Host species | Rabbit |
| Tested applications | Suitable for: WB, IP |
| Species reactivity | Reacts with: Human Predicted to work with: Mouse, Rat, Rabbit, Horse, Guinea pig, Cow, Dog, Pig, Chimpanzee, Rhesus monkey, Gorilla, Orangutan  |
| Immunogen | Synthetic peptide corresponding to Human RUNX1T1/ETO/CDR aa 554-604. Database link: NP_001185555.1 |
| Positive control | 293T whole cell lysate |
| General notes | <p>The Life Science industry has been in the grips of a reproducibility crisis for a number of years. Abcam is leading the way in addressing this with our range of recombinant monoclonal antibodies and knockout edited cell lines for gold-standard validation. Please check that this product meets your needs before purchasing.</p> <p>If you have any questions, special requirements or concerns, please send us an inquiry and/or contact our Support team ahead of purchase. Recommended alternatives for this product can be found below, along with publications, customer reviews and Q&As</p> |

Properties

| | |
|-----------------------------|---|
| Form | Liquid |
| Storage instructions | Shipped at 4°C. Upon delivery aliquot and store at -20°C. Avoid freeze / thaw cycles. |
| Storage buffer | pH: 7 Preservative: 0.09% Sodium azide Constituent: 99% Tris citrate/phosphate |
| | pH 7 to 8 |
| Purity | Immunogen affinity purified |
| Purification notes | ab124269 was affinity purified using an epitope specific to RUNX1T1/ETO/CDR immobilized on solid support. |
| Clonality | Polyclonal |

Isotype

IgG

Applications

The Abpromise guarantee

Our **Abpromise guarantee** covers the use of ab124269 in the following tested applications.

The application notes include recommended starting dilutions; optimal dilutions/concentrations should be determined by the end user.

| Application | Abreviews | Notes |
|-------------|-----------|------------------------------|
| WB | | 1/500 - 1/2000. |
| IP | | Use at 2-10 µg/mg of lysate. |

Target

Function

Transcription regulator that exerts its function by binding to histone deacetylases and transcription factors. Can repress transactivation mediated by TCF12.

Tissue specificity

Most abundantly expressed in brain. Lower levels in lung, heart, testis and ovary.

Involvement in disease

Note=A chromosomal aberration involving RUNX1T1 is a cause of acute myeloid leukemia (AML-M2). Translocation t(8;21)(q22;q22) with RUNX1/AML1.
Defects in RUNX1T1 may be a cause of colorectal cancer (CRC) [MIM:114500].

Sequence similarities

Belongs to the CBFA2T family.
Contains 1 MYND-type zinc finger.
Contains 1 TAFH (NHR1) domain.

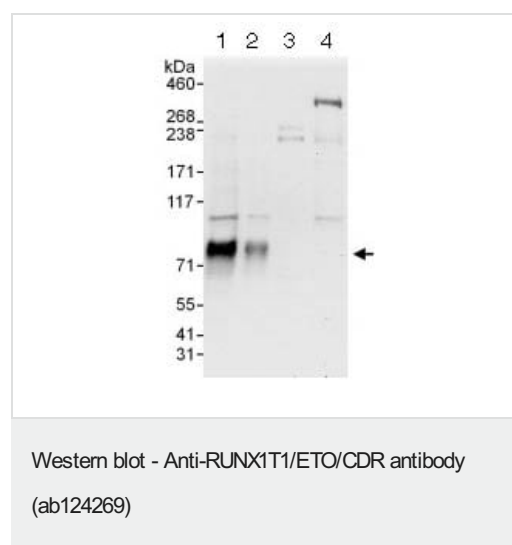
Domain

The TAFH domain mediates interaction with transcription regulators.

Cellular localization

Nucleus.

Images



All lanes : Anti-RUNX1T1/ETO/CDR antibody (ab124269) at 0.4 µg/ml

Lane 1 : 293T whole cell lysate at 50 µg

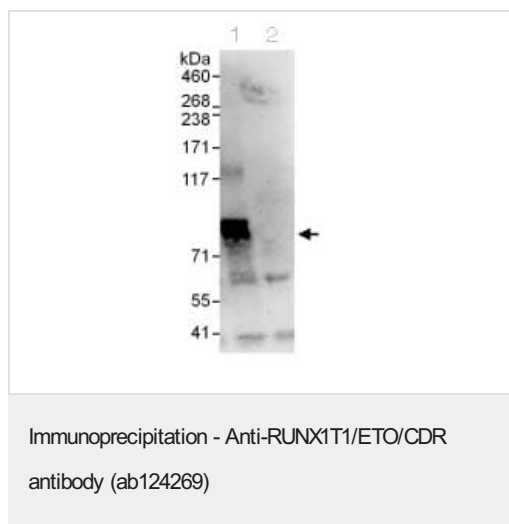
Lane 2 : 293T whole cell lysate at 15 µg

Lane 3 : Jurkat whole cell lysate at 50 µg

Lane 4 : HeLa whole cell lysate at 50 µg

Developed using the ECL technique.

Exposure time: 30 seconds



ab124269 at 1 µg/ml staining RUNX1T1/ETO/CDR in 293T whole cell lysate immunoprecipitated using ab124269 at 6 µg/mg lysate (1 mg/IP; 20% of IP loaded/lane). Lane 2: control IgG. Predicted band size : 68 kDa. Exposure time: 30 seconds

Please note: All products are "FOR RESEARCH USE ONLY. NOT FOR USE IN DIAGNOSTIC PROCEDURES"

Our Abpromise to you: Quality guaranteed and expert technical support

- Replacement or refund for products not performing as stated on the datasheet
- Valid for 12 months from date of delivery
- Response to your inquiry within 24 hours
- We provide support in Chinese, English, French, German, Japanese and Spanish
- Extensive multi-media technical resources to help you
- We investigate all quality concerns to ensure our products perform to the highest standards

If the product does not perform as described on this datasheet, we will offer a refund or replacement. For full details of the Abpromise, please visit <https://www.abcam.com/abpromise> or contact our technical team.

Terms and conditions

- Guarantee only valid for products bought direct from Abcam or one of our authorized distributors