


## Product datasheet

# Anti-RWDD1 antibody [EPR13715(B)] ab181994

Recombinant RabMAb

[4 Images](#)

### Overview

<b>Product name</b>	Anti-RWDD1 antibody [EPR13715(B)]
<b>Description</b>	Rabbit monoclonal [EPR13715(B)] to RWDD1
<b>Host species</b>	Rabbit
<b>Tested applications</b>	<b>Suitable for:</b> Flow Cyt (Intra), WB, IP
<b>Species reactivity</b>	<b>Reacts with:</b> Human <b>Predicted to work with:</b> Mouse, Rat 
<b>Immunogen</b>	Synthetic peptide. This information is proprietary to Abcam and/or its suppliers.
<b>Positive control</b>	HeLa cells; Jurkat, HeLa, 293, A673 cell lysate
<b>General notes</b>	<p>This product is a recombinant monoclonal antibody, which offers several advantages including:</p> <ul style="list-style-type: none"><li>- High batch-to-batch consistency and reproducibility</li><li>- Improved sensitivity and specificity</li><li>- Long-term security of supply</li><li>- Animal-free production</li></ul> <p>For more information <a href="#">see here</a>.</p> <p>Our RabMAb<sup>®</sup> technology is a patented hybridoma-based technology for making rabbit monoclonal antibodies. For details on our patents, please refer to <a href="#">RabMAb<sup>®</sup> patents</a>.</p>

### Properties

<b>Form</b>	Liquid
<b>Storage instructions</b>	Shipped at 4°C. Store at +4°C short term (1-2 weeks). Upon delivery aliquot. Store at -20°C long term. Avoid freeze / thaw cycle.
<b>Storage buffer</b>	Preservative: 0.01% Sodium azide Constituents: 59% PBS, 40% Glycerol (glycerin, glycerine), 0.05% BSA
<b>Purity</b>	Tissue culture supernatant
<b>Clonality</b>	Monoclonal
<b>Clone number</b>	EPR13715(B)
<b>Isotype</b>	IgG

## Applications

### The Abpromise guarantee

Our **Abpromise guarantee** covers the use of ab181994 in the following tested applications.

The application notes include recommended starting dilutions; optimal dilutions/concentrations should be determined by the end user.

Application	Abreviews	Notes
Flow Cyt (Intra)		1/10. <b>ab172730</b> - Rabbit monoclonal IgG, is suitable for use as an isotype control with this antibody.
WB		1/10000 - 1/50000. Detects a band of approximately 30 kDa (predicted molecular weight: 28 kDa).
IP		1/60.

## Target

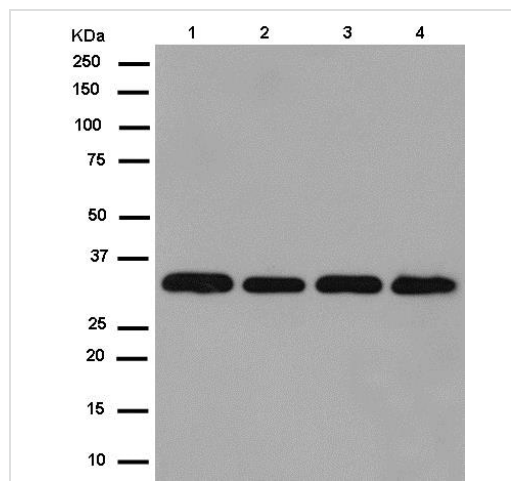
### Function

Protects DRG2 from proteolytic degradation.

### Sequence similarities

Belongs to the RWDD1/GIR2 family.  
Contains 1 RWD domain.

## Images



Western blot - Anti-RWDD1 antibody [EPR13715(B)] (ab181994)

**All lanes** : Anti-RWDD1 antibody [EPR13715(B)] (ab181994) at 1/50000 dilution

**Lane 1** : Jurkat cell lysate

**Lane 2** : HeLa cell lysate

**Lane 3** : 293 cell lysate

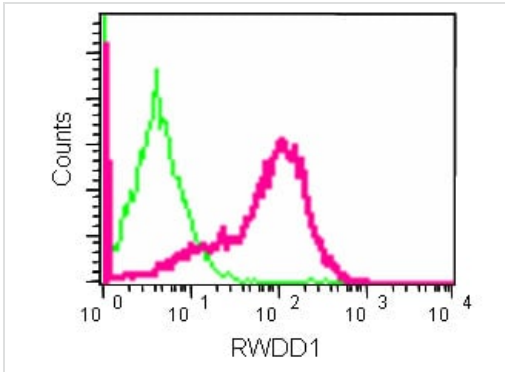
**Lane 4** : A673 cell lysate

Lysates/proteins at 20 µg per lane.

### Secondary

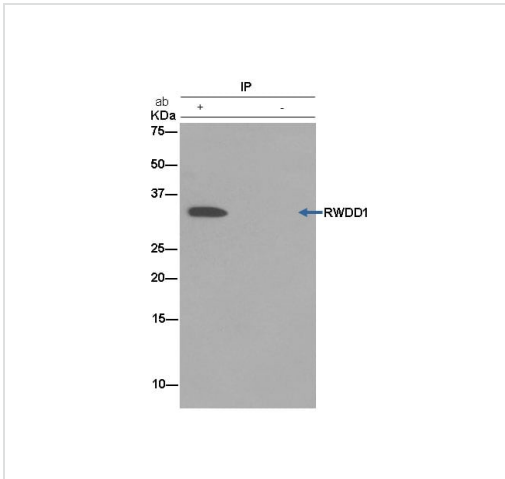
**All lanes** : Goat Anti-Rabbit IgG, (H+L), Peroxidase conjugated at 1/1000 dilution

**Predicted band size:** 28 kDa



Flow Cytometry (Intracellular) - Anti-RWDD1 antibody [EPR13715(B)] (ab181994)

Intracellular flow cytometric analysis of 2% paraformaldehyde-fixed Helacells labeling RWDD1 with ab181994 at a 1/10 dilution, or with rabbit IgG isotype control. Goat anti rabbit IgG (FITC) at a 1/150 dilution was used as a secondary antibody.







Immunoprecipitation - Anti-RWDD1 antibody [EPR13715(B)] (ab181994)

Immunoprecipitation of Jurkat labeling RWDD1 using ab181994 at a 1/60 dilution (lane 1). Lane 2 shows the negative control. Anti-Rabbit IgG (HRP), specific to the non-reduced form of IgG, was used as a secondary antibody at a dilution of 1/1500.

Blocking/dilution buffer and concentration: 5% NFDm/TBST

Why choose a recombinant antibody?

 <p><b>Research with confidence</b> Consistent and reproducible results</p>	 <p><b>Long-term and scalable supply</b> Recombinant technology</p>
 <p><b>Success from the first experiment</b> Confirmed specificity</p>	 <p><b>Ethical standards compliant</b> Animal-free production</p>

Anti-RWDD1 antibody [EPR13715(B)] (ab181994)

**Please note:** All products are "FOR RESEARCH USE ONLY. NOT FOR USE IN DIAGNOSTIC PROCEDURES"

### **Our Abpromise to you: Quality guaranteed and expert technical support**

---

- Replacement or refund for products not performing as stated on the datasheet
- Valid for 12 months from date of delivery
- Response to your inquiry within 24 hours
  
- We provide support in Chinese, English, French, German, Japanese and Spanish
- Extensive multi-media technical resources to help you
- We investigate all quality concerns to ensure our products perform to the highest standards

If the product does not perform as described on this datasheet, we will offer a refund or replacement. For full details of the Abpromise, please visit <https://www.abcam.com/abpromise> or contact our technical team.

### **Terms and conditions**

---

- Guarantee only valid for products bought direct from Abcam or one of our authorized distributors