

Product datasheet

Anti-S100 alpha 2/S100A2 antibody ab103423

[2 Abreviews](#) [3 Images](#)

Overview

Product name	Anti-S100 alpha 2/S100A2 antibody
Description	Rabbit polyclonal to S100 alpha 2/S100A2
Host species	Rabbit
Tested applications	Suitable for: WB
Species reactivity	Reacts with: Mouse, Human
Immunogen	Recombinant full length protein within Human S100 alpha 2/S100A2 aa 1-100. The exact immunogen sequence used to generate this antibody is proprietary information. If additional detail on the immunogen is needed to determine the suitability of the antibody for your needs, please contact our Scientific Support team to discuss your requirements. (AAH02829) Database link: P29034 Run BLAST with Run BLAST with
Positive control	Human pancreas and Mouse liver tissue lysates; S100 alpha 2/S100A2 transfected 293T cell lysate
General notes	<p>The Life Science industry has been in the grips of a reproducibility crisis for a number of years. Abcam is leading the way in addressing this with our range of recombinant monoclonal antibodies and knockout edited cell lines for gold-standard validation. Please check that this product meets your needs before purchasing.</p> <p>If you have any questions, special requirements or concerns, please send us an inquiry and/or contact our Support team ahead of purchase. Recommended alternatives for this product can be found below, along with publications, customer reviews and Q&As</p>

Properties

Form	Liquid
Storage instructions	Shipped at 4°C. Upon delivery aliquot. Store at -20°C or -80°C. Avoid freeze / thaw cycle.
Storage buffer	pH: 7.40 Constituent: 100% PBS
Purity	Protein A purified
Clonality	Polyclonal
Isotype	IgG

Applications

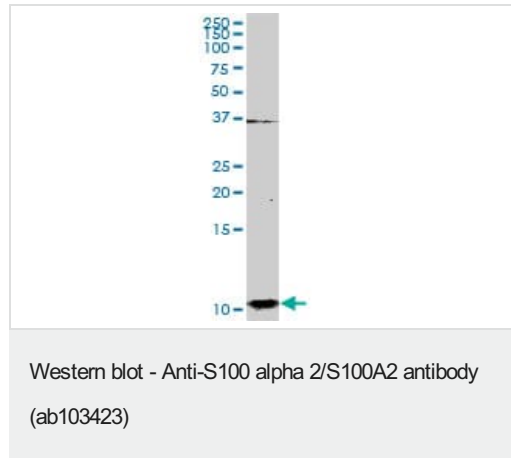
The Abpromise guarantee Our **Abpromise guarantee** covers the use of ab103423 in the following tested applications. The application notes include recommended starting dilutions; optimal dilutions/concentrations should be determined by the end user.

Application	Abreviews	Notes
WB		1/500 - 1/1000. Predicted molecular weight: 11 kDa.

Target

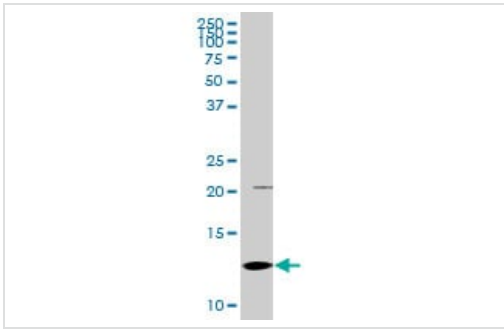
Function	May function as calcium sensor and modulator, contributing to cellular calcium signaling. May function by interacting with other proteins, such as TPR-containing proteins, and indirectly play a role in many physiological processes. May also play a role in suppressing tumor cell growth.
Tissue specificity	A subset of epithelial cells including normal human mammary epithelial cells and keratinocytes.
Sequence similarities	Belongs to the S-100 family. Contains 2 EF-hand domains.
Developmental stage	Preferentially expressed in normal human mammary epithelial cells as opposed to tumor-derived ones. The level of S100L was shown to correlate inversely with tumor progression.

Images



Anti-S100 alpha 2/S100A2 antibody (ab103423) at 1/500 dilution + Human pancreas tissue lysate at 50 µg

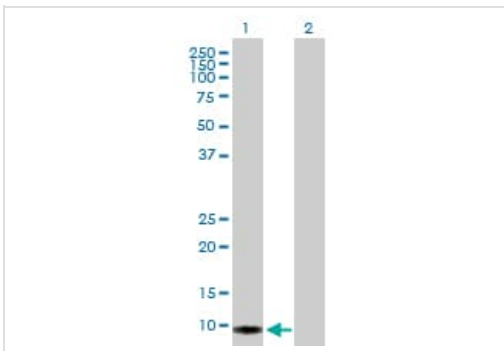
Predicted band size: 11 kDa



Western blot - Anti-S100 alpha 2/S100A2 antibody (ab103423)

Anti-S100 alpha 2/S100A2 antibody (ab103423) at 1/500 dilution +
 Mouse liver tissue lysate at 50 µg

Predicted band size: 11 kDa



Western blot - Anti-S100 alpha 2/S100A2 antibody (ab103423)

All lanes : Anti-S100 alpha 2/S100A2 antibody (ab103423) at
 1/500 dilution

Lane 1 : S100 alpha 2/S100A2 transfected 293T cell lysate

Lane 2 : Non-transfected 293T cell lysate

Lysates/proteins at 25 µg per lane.

Predicted band size: 11 kDa

Please note: All products are "FOR RESEARCH USE ONLY. NOT FOR USE IN DIAGNOSTIC PROCEDURES"

Our Abpromise to you: Quality guaranteed and expert technical support

- Replacement or refund for products not performing as stated on the datasheet
- Valid for 12 months from date of delivery
- Response to your inquiry within 24 hours
- We provide support in Chinese, English, French, German, Japanese and Spanish
- Extensive multi-media technical resources to help you
- We investigate all quality concerns to ensure our products perform to the highest standards

If the product does not perform as described on this datasheet, we will offer a refund or replacement. For full details of the Abpromise, please visit <https://www.abcam.com/abpromise> or contact our technical team.

Terms and conditions

- Guarantee only valid for products bought direct from Abcam or one of our authorized distributors