


## Product datasheet

# Anti-S100 beta antibody [4C4.9] - BSA and Azide free ab212816

[2 References](#) [2 Images](#)

### Overview

---

<b>Product name</b>	Anti-S100 beta antibody [4C4.9] - BSA and Azide free
<b>Description</b>	Mouse monoclonal [4C4.9] to S100 beta - BSA and Azide free
<b>Host species</b>	Mouse
<b>Tested applications</b>	<b>Suitable for:</b> IHC-P, WB
<b>Species reactivity</b>	<b>Reacts with:</b> Human <b>Predicted to work with:</b> Orangutan 
<b>Immunogen</b>	Full length native protein (purified) corresponding to Cow S100 beta. Purified bovine brain protein. Database link: <a href="#">P04271</a>
<b>Positive control</b>	Human melanoma and brain tissues; Human cerebellum lysate; A2058 cells.
<b>General notes</b>	<p>The Life Science industry has been in the grips of a reproducibility crisis for a number of years. Abcam is leading the way in addressing this with our range of recombinant monoclonal antibodies and knockout edited cell lines for gold-standard validation. Please check that this product meets your needs before purchasing.</p> <p>If you have any questions, special requirements or concerns, please send us an inquiry and/or contact our Support team ahead of purchase. Recommended alternatives for this product can be found below, along with publications, customer reviews and Q&amp;As</p>

### Properties

---

<b>Form</b>	Liquid
<b>Storage instructions</b>	Shipped at 4°C. Store at +4°C short term (1-2 weeks). Upon delivery aliquot. Store at -20°C long term. Avoid freeze / thaw cycle.
<b>Storage buffer</b>	pH: 7.2 Constituent: 100% PBS
<b>Carrier free</b>	Yes
<b>Purity</b>	Protein A purified
<b>Purification notes</b>	ab212816 was purified from Bioreactor Concentrate by Protein A/G.
<b>Clonality</b>	Monoclonal

Clone number	4C4.9
Isotype	IgG2a
Light chain type	kappa

## Applications

**The Abpromise guarantee** Our **Abpromise guarantee** covers the use of ab212816 in the following tested applications.

The application notes include recommended starting dilutions; optimal dilutions/concentrations should be determined by the end user.

Application	Abreviews	Notes
IHC-P		Use a concentration of 0.25 - 0.5 µg/ml. Perform heat mediated antigen retrieval with citrate buffer pH 6 before commencing with IHC staining protocol. (Primary incubation for 30 minutes at RT).
WB		Use a concentration of 0.5 - 1 µg/ml. Predicted molecular weight: 11 kDa.

## Target

### Function

Weakly binds calcium but binds zinc very tightly-distinct binding sites with different affinities exist for both ions on each monomer. Physiological concentrations of potassium ion antagonize the binding of both divalent cations, especially affecting high-affinity calcium-binding sites. Binds to and initiates the activation of STK38 by releasing autoinhibitory intramolecular interactions within the kinase. Interaction with AGER after myocardial infarction may play a role in myocyte apoptosis by activating ERK1/2 and p53/TP53 signaling.

### Tissue specificity

Although predominant among the water-soluble brain proteins, S100 is also found in a variety of other tissues.

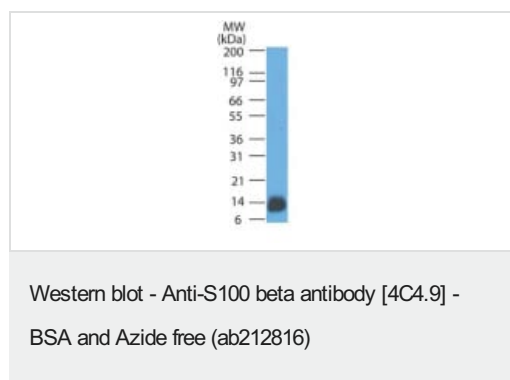
### Sequence similarities

Belongs to the S-101 family.  
Contains 2 EF-hand domains.

### Cellular localization

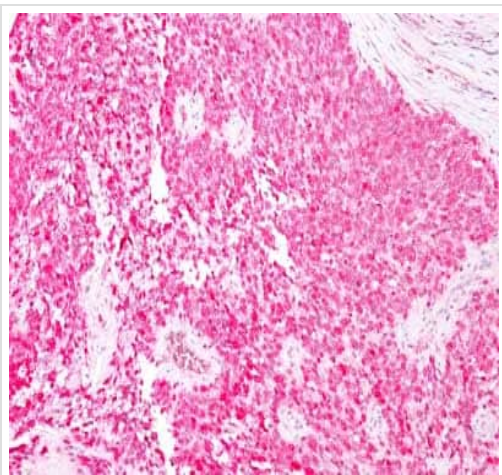
Cytoplasm. Nucleus.

## Images



Anti-S100 beta antibody [4C4.9] - BSA and Azide free (ab212816)  
at 1 µg/ml + Human cerebellum lysate

**Predicted band size:** 11 kDa



Immunohistochemical analysis of formalin-fixed, paraffin-embedded Human melanoma tissue labeling S100 with ab212816 at 0.5 µg/ml, with AEC chromogen.

Immunohistochemistry (Formalin/PFA-fixed paraffin-embedded sections) - Anti-S100 beta antibody [4C4.9] - BSA and Azide free (ab212816)

**Please note:** All products are "FOR RESEARCH USE ONLY. NOT FOR USE IN DIAGNOSTIC PROCEDURES"

#### **Our Abpromise to you: Quality guaranteed and expert technical support**

---

- Replacement or refund for products not performing as stated on the datasheet
- Valid for 12 months from date of delivery
- Response to your inquiry within 24 hours
- We provide support in Chinese, English, French, German, Japanese and Spanish
- Extensive multi-media technical resources to help you
- We investigate all quality concerns to ensure our products perform to the highest standards

If the product does not perform as described on this datasheet, we will offer a refund or replacement. For full details of the Abpromise, please visit <https://www.abcam.com/abpromise> or contact our technical team.

#### **Terms and conditions**

---

- Guarantee only valid for products bought direct from Abcam or one of our authorized distributors