




Product datasheet

Anti-S100 beta antibody - Astrocyte Marker ab227914

[2 References](#) [6 Images](#)

Overview

Product name	Anti-S100 beta antibody - Astrocyte Marker
Description	Rabbit polyclonal to S100 beta - Astrocyte Marker
Host species	Rabbit
Tested applications	Suitable for: IHC-P, WB, IHC-Fr
Species reactivity	Reacts with: Mouse, Rat, Human Predicted to work with: Rabbit, Cow, Rhesus monkey 
Immunogen	Recombinant full length protein corresponding to Human S100 beta aa 1 to the C-terminus. Database link: P04271  Run BLAST with  Run BLAST with
Positive control	WB: S100 beta transfected HEK-293T whole cell extracts; A-375 whole cell extracts; Mouse and rat brain tissue extracts. IHC-P: Mouse hind brain tissue. IHC-Fr: Adult mouse retina tissue.
General notes	<p>The Life Science industry has been in the grips of a reproducibility crisis for a number of years. Abcam is leading the way in addressing this with our range of recombinant monoclonal antibodies and knockout edited cell lines for gold-standard validation. Please check that this product meets your needs before purchasing.</p> <p>If you have any questions, special requirements or concerns, please send us an inquiry and/or contact our Support team ahead of purchase. Recommended alternatives for this product can be found below, along with publications, customer reviews and Q&As</p>

Properties

Form	Liquid
Storage instructions	Shipped at 4°C. Store at +4°C short term (1-2 weeks). Upon delivery aliquot. Store at -20°C long term. Avoid freeze / thaw cycle.
Storage buffer	pH: 7.00 Preservative: 0.025% Proclin 300 Constituents: 79% PBS, 20% Glycerol (glycerin, glycerine)
Purity	Immunogen affinity purified
Clonality	Polyclonal
Isotype	IgG

Applications

The Abpromise guarantee

Our **Abpromise guarantee** covers the use of ab227914 in the following tested applications.

The application notes include recommended starting dilutions; optimal dilutions/concentrations should be determined by the end user.

Application	Abreviews	Notes
IHC-P		1/100 - 1/1000.
WB		1/500 - 1/3000. Predicted molecular weight: 11 kDa.
IHC-Fr		1/100 - 1/1000.

Target

Function

Weakly binds calcium but binds zinc very tightly-distinct binding sites with different affinities exist for both ions on each monomer. Physiological concentrations of potassium ion antagonize the binding of both divalent cations, especially affecting high-affinity calcium-binding sites. Binds to and initiates the activation of STK38 by releasing autoinhibitory intramolecular interactions within the kinase. Interaction with AGER after myocardial infarction may play a role in myocyte apoptosis by activating ERK1/2 and p53/TP53 signaling.

Tissue specificity

Although predominant among the water-soluble brain proteins, S100 is also found in a variety of other tissues.

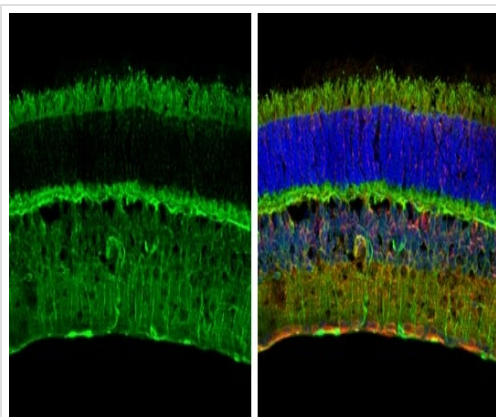
Sequence similarities

Belongs to the S-101 family.
Contains 2 EF-hand domains.

Cellular localization

Cytoplasm. Nucleus.

Images

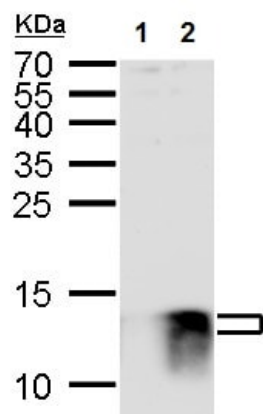


Immunohistochemistry (Frozen sections) - Anti-S100 beta antibody - Astrocyte Marker (ab227914)

Frozen sections of adult mouse retina tissue stained for S100 beta using ab227914 at 1/250 dilution in immunohistochemical analysis.

Counter stain: beta Tubulin 3/ TUJ1, stained by beta Tubulin 3/ TUJ1 antibody at 1/250 dilution (red).

Nuclear counter stain: Fluoroshield with DAPI (blue).



Western blot - Anti-S100 beta antibody - Astrocyte Marker (ab227914)

All lanes : Anti-S100 beta antibody - Astrocyte Marker (ab227914) at 1/1000 dilution

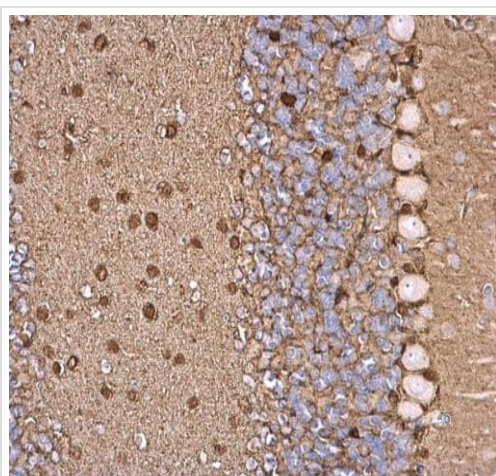
Lane 1 : Non-transfected HEK-293T (human epithelial cell line from embryonic kidney transformed with large T antigen) whole cell extract

Lane 2 : HEK-293T (human epithelial cell line from embryonic kidney transformed with large T antigen) transfected with V5-human S100 beta, whole cell extract

Lysates/proteins at 30 µg per lane.

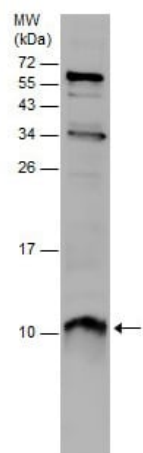
Predicted band size: 11 kDa

15% SDS-PAGE gel.



Immunohistochemistry (Formalin/PFA-fixed paraffin-embedded sections) - Anti-S100 beta antibody - Astrocyte Marker (ab227914)

Paraffin-embedded mouse hind brain tissue stained for S100 beta using ab227914 at 1/500 dilution in immunohistochemical analysis.

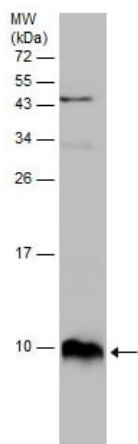


Anti-S100 beta antibody - Astrocyte Marker (ab227914) at 1/500 dilution + A-375 (human malignant melanoma cell line) whole cell extract at 30 μ g

Predicted band size: 11 kDa

15% SDS-PAGE gel.

Western blot - Anti-S100 beta antibody - Astrocyte Marker (ab227914)

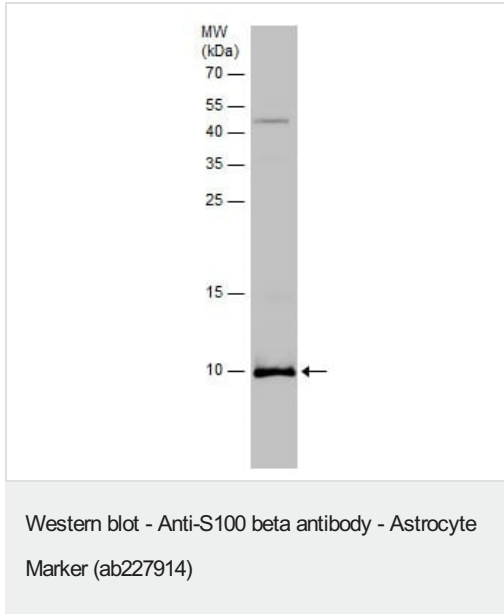


Anti-S100 beta antibody - Astrocyte Marker (ab227914) at 1/1000 dilution + Mouse brain tissue extract at 50 μ g

Predicted band size: 11 kDa

15% SDS-PAGE gel.

Western blot - Anti-S100 beta antibody - Astrocyte Marker (ab227914)



Anti-S100 beta antibody - Astrocyte Marker (ab227914) at 1/1000 dilution + Rat brain tissue extract at 50 µg

Predicted band size: 11 kDa

15% SDS-PAGE gel.

Please note: All products are "FOR RESEARCH USE ONLY. NOT FOR USE IN DIAGNOSTIC PROCEDURES"

Our Abpromise to you: Quality guaranteed and expert technical support

- Replacement or refund for products not performing as stated on the datasheet
- Valid for 12 months from date of delivery
- Response to your inquiry within 24 hours
- We provide support in Chinese, English, French, German, Japanese and Spanish
- Extensive multi-media technical resources to help you
- We investigate all quality concerns to ensure our products perform to the highest standards

If the product does not perform as described on this datasheet, we will offer a refund or replacement. For full details of the Abpromise, please visit <https://www.abcam.com/abpromise> or contact our technical team.

Terms and conditions

- Guarantee only valid for products bought direct from Abcam or one of our authorized distributors