

Product datasheet

Anti-S100A12/CGRP antibody ab37657

★★★★★ [1 Abreviews](#) [11 References](#) [2 Images](#)

Overview

Product name	Anti-S100A12/CGRP antibody
Description	Rabbit polyclonal to S100A12/CGRP
Host species	Rabbit
Tested applications	Suitable for: IHC-Fr, WB
Species reactivity	Reacts with: Human, Recombinant fragment
Immunogen	Fusion protein corresponding to Human S100A12/CGRP.
General notes	<p>The Life Science industry has been in the grips of a reproducibility crisis for a number of years. Abcam is leading the way in addressing this with our range of recombinant monoclonal antibodies and knockout edited cell lines for gold-standard validation. Please check that this product meets your needs before purchasing.</p> <p>If you have any questions, special requirements or concerns, please send us an inquiry and/or contact our Support team ahead of purchase. Recommended alternatives for this product can be found below, along with publications, customer reviews and Q&As</p>

Properties

Form	Liquid
Storage instructions	Shipped at 4°C. Store at +4°C short term (1-2 weeks). Upon delivery aliquot. Store at -20°C or -80°C. Avoid freeze / thaw cycle.
Storage buffer	Preservative: 0.1% Sodium azide Constituents: 50% Glycerol, PBS
Purity	Immunogen affinity purified
Clonality	Polyclonal
Isotype	IgG

Applications

The Abpromise guarantee Our **Abpromise guarantee** covers the use of ab37657 in the following tested applications. The application notes include recommended starting dilutions; optimal dilutions/concentrations should be determined by the end user.

Application	Abreviews	Notes
IHC-Fr		1/2000.
WB		1/1000 - 1/10000. Detects a band of approximately 10.5 kDa (predicted molecular weight: 10.5 kDa).

Target	
Function	Calcitermin possesses antifungal activity against <i>C.albicans</i> and is also active against <i>E.coli</i> and <i>P.aeruginosa</i> but not <i>L.monocytogenes</i> and <i>S.aureus</i> . Binds calcium, zinc and copper. Presence of zinc increases the affinity for calcium. Plays an important role in the inflammatory response. Interaction with AGER on endothelium, mononuclear phagocytes, and lymphocytes triggers cellular activation, with generation of key proinflammatory mediators.
Tissue specificity	Monocytes and lymphocytes.
Sequence similarities	Belongs to the S-101 family. Contains 2 EF-hand domains.

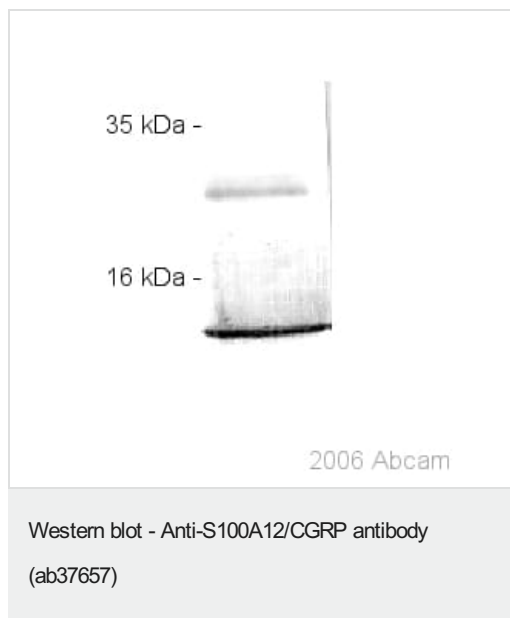
Images



2006 Abcam

Anti-S100A12/CGRP antibody (ab37657) detects macrophage infiltrates expressing S100A12/CGRP in colon tissues from a patient with Crohn's disease.

Immunohistochemistry (Frozen sections) - Anti-S100A12/CGRP antibody (ab37657)



Anti-S100A12/CGRP antibody (ab37657) + 200 ng recombinant human S100A12/CGRP

Secondary

anti-rabbit IgG alkaline phosphatase conjugate

Predicted band size: 10.5 kDa

Observed band size: 10.5 kDa

Additional bands at: 21 kDa (possible dimer)

Please note: All products are "FOR RESEARCH USE ONLY. NOT FOR USE IN DIAGNOSTIC PROCEDURES"

Our Abpromise to you: Quality guaranteed and expert technical support

- Replacement or refund for products not performing as stated on the datasheet
- Valid for 12 months from date of delivery
- Response to your inquiry within 24 hours
- We provide support in Chinese, English, French, German, Japanese and Spanish
- Extensive multi-media technical resources to help you
- We investigate all quality concerns to ensure our products perform to the highest standards

If the product does not perform as described on this datasheet, we will offer a refund or replacement. For full details of the Abpromise, please visit <https://www.abcam.com/abpromise> or contact our technical team.

Terms and conditions

- Guarantee only valid for products bought direct from Abcam or one of our authorized distributors