




Product datasheet

Anti-S100P binding protein antibody ab203689

1 Image

Overview

Product name	Anti-S100P binding protein antibody
Description	Rabbit polyclonal to S100P binding protein
Host species	Rabbit
Tested applications	Suitable for: IHC-P
Species reactivity	Reacts with: Mouse Predicted to work with: Rat, Human 
Immunogen	Synthetic peptide within Human S100P binding protein aa 350 to the C-terminus (C terminal) conjugated to keyhole limpet haemocyanin. The exact immunogen sequence used to generate this antibody is proprietary information. If additional detail on the immunogen is needed to determine the suitability of the antibody for your needs, please contact our Scientific Support team to discuss your requirements. Database link: Q96BU1  Run BLAST with  Run BLAST with
Positive control	Mouse spleen tissue.
General notes	The Life Science industry has been in the grips of a reproducibility crisis for a number of years. Abcam is leading the way in addressing this with our range of recombinant monoclonal antibodies and knockout edited cell lines for gold-standard validation. Please check that this product meets your needs before purchasing. If you have any questions, special requirements or concerns, please send us an inquiry and/or contact our Support team ahead of purchase. Recommended alternatives for this product can be found below, along with publications, customer reviews and Q&As

Properties

Form	Liquid
Storage instructions	Shipped at 4°C. Store at +4°C short term (1-2 weeks). Upon delivery aliquot. Store at -20°C long term. Avoid freeze / thaw cycle.
Storage buffer	pH: 7.40 Preservative: 0.02% Proclin 300 Constituents: 50% Glycerol (glycerin, glycerine), 1% BSA, 48.98% TBS, 1X
Purity	Protein A purified

Clonality	Polyclonal
Isotype	IgG

Applications

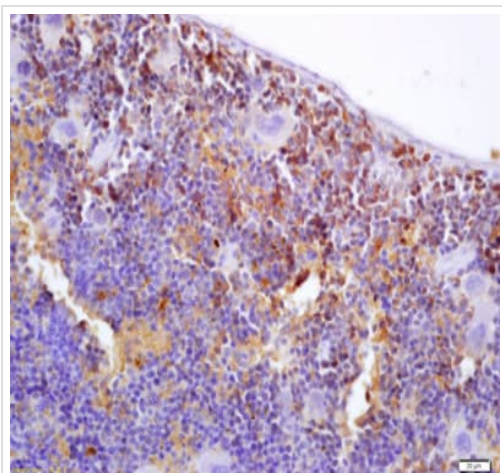
The Abpromise guarantee Our **Abpromise guarantee** covers the use of ab203689 in the following tested applications. The application notes include recommended starting dilutions; optimal dilutions/concentrations should be determined by the end user.

Application	Abreviews	Notes
IHC-P		1/100 - 1/500. Perform heat mediated antigen retrieval with citrate buffer pH 6 before commencing with IHC staining protocol.

Target

Tissue specificity	Expressed in brain, spleen, and lung. Not detected in pancreas or liver. In pancreas, expressed predominantly in islet cells and to a lesser extent in acinar cells, but not expressed in ductal cells. Up-regulated in various pancreatic ductal adenocarcinomas and pancreatic intraepithelial neoplasias. Detected in pancreatic ductal adenocarcinoma cells (at protein level). Not detected in non-neoplastic ductal epithelium (at protein level).
Cellular localization	Nucleus. Colocalizes with S100P in the nucleus.

Images



Immunohistochemical analysis of formalin-fixed, paraffin-embedded Mouse spleen tissue labeling S100P binding protein with ab203689 at 1/200 dilution followed by conjugation to the secondary antibody and DAB staining.

Immunohistochemistry (Formalin/PFA-fixed paraffin-embedded sections) - Anti-S100P binding protein antibody (ab203689)

Please note: All products are "FOR RESEARCH USE ONLY. NOT FOR USE IN DIAGNOSTIC PROCEDURES"

Our Abpromise to you: Quality guaranteed and expert technical support

- Replacement or refund for products not performing as stated on the datasheet
- Valid for 12 months from date of delivery
- Response to your inquiry within 24 hours

- We provide support in Chinese, English, French, German, Japanese and Spanish
- Extensive multi-media technical resources to help you
- We investigate all quality concerns to ensure our products perform to the highest standards

If the product does not perform as described on this datasheet, we will offer a refund or replacement. For full details of the Abpromise, please visit <https://www.abcam.com/abpromise> or contact our technical team.

Terms and conditions

- Guarantee only valid for products bought direct from Abcam or one of our authorized distributors