




## Product datasheet

### Anti-S1P1/EDG1 antibody ab11424

★ ★ ★ ★ ★ [3 Abreviews](#) [28 References](#) [3 Images](#)

#### Overview

<b>Product name</b>	Anti-S1P1/EDG1 antibody
<b>Description</b>	Rabbit polyclonal to S1P1/EDG1
<b>Host species</b>	Rabbit
<b>Specificity</b>	ab11424 detects S1P1/EDG1 protein in transfected human cell samples. This antibody shows no cross-reactivity to S1P3.
<b>Tested applications</b>	<b>Suitable for:</b> IP, ICC/IF, IHC-P, WB, Flow Cyt, ICC
<b>Species reactivity</b>	<b>Reacts with:</b> Mouse, Rat, Human <b>Predicted to work with:</b> Horse, Cow, Cat, Monkey 
<b>Immunogen</b>	Synthetic peptide corresponding to Mouse S1P1/EDG1 aa 359-372. Sequence: SHPQKDDGDNPETI  (Peptide available as <a href="#">ab39763</a> ) <div>  <a href="#">Run BLAST with</a>  <a href="#">Run BLAST with</a> </div>
<b>Positive control</b>	WB: Rat brain tissue lysate; Neuro-2a cell lysate. ICC: CCL39 and Neuro-2a cells.
<b>General notes</b>	<p>The Life Science industry has been in the grips of a reproducibility crisis for a number of years. Abcam is leading the way in addressing this with our range of recombinant monoclonal antibodies and knockout edited cell lines for gold-standard validation. Please check that this product meets your needs before purchasing.</p> <p>If you have any questions, special requirements or concerns, please send us an inquiry and/or contact our Support team ahead of purchase. Recommended alternatives for this product can be found below, along with publications, customer reviews and Q&amp;As</p>

#### Properties

<b>Form</b>	Liquid
<b>Storage instructions</b>	Shipped at 4°C. Store at +4°C short term (1-2 weeks). Upon delivery aliquot. Store at -20°C or -80°C. Avoid freeze / thaw cycle.
<b>Storage buffer</b>	Preservative: 0.05% Sodium azide Constituents: PBS, 1% BSA
<b>Purity</b>	Immunogen affinity purified

Clonality	Polyclonal
Isotype	IgG

## Applications

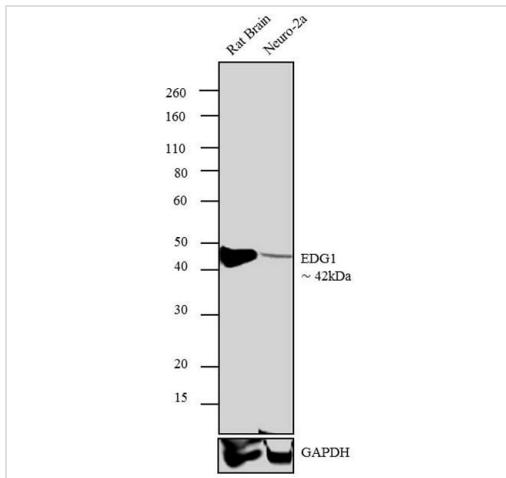
**The Abpromise guarantee** Our **Abpromise guarantee** covers the use of ab11424 in the following tested applications. The application notes include recommended starting dilutions; optimal dilutions/concentrations should be determined by the end user.

Application	Abreviews	Notes
IP		Use at an assay dependent concentration.
ICC/IF		Use at an assay dependent concentration.
IHC-P		Use at an assay dependent concentration.
WB	★ ★ ★ ★ ★ (3)	Use a concentration of 1 µg/ml. Detects a band of approximately 44 kDa. Band represents recombinant S1P1 from transfected HEK293 cells.
Flow Cyt		Use at an assay dependent concentration. PubMed: 20733200 <b>ab171870</b> - Rabbit polyclonal IgG, is suitable for use as an isotype control with this antibody.
ICC		Use a concentration of 2 µg/ml.

## Target

<b>Function</b>	Receptor for the lysosphingolipid sphingosine 1-phosphate (S1P). S1P is a bioactive lysophospholipid that elicits diverse physiological effect on most types of cells and tissues. This inducible epithelial cell G-protein-coupled receptor may be involved in the processes that regulate the differentiation of endothelial cells. Seems to be coupled to the G(i) subclass of heteromeric G proteins.
<b>Tissue specificity</b>	Endothelial cells, and to a lesser extent, in vascular smooth muscle cells, fibroblasts, melanocytes, and cells of epithelioid origin.
<b>Sequence similarities</b>	Belongs to the G-protein coupled receptor 1 family.
<b>Post-translational modifications</b>	S1P-induced endothelial cell migration requires the PKB/AKT1-mediated phosphorylation of the third intracellular loop at the Thr-236 residue.
<b>Cellular localization</b>	Cell membrane.

## Images



Western blot - Anti-S1P1/EDG1 antibody (ab11424)

**Lane 1 :** Anti-S1P1/EDG1 antibody (ab11424) at 2 µg/ml

**Lane 2 :** Anti-S1P1/EDG1 antibody (ab11424) at 2 mg/ml

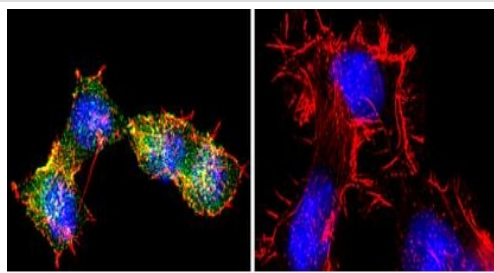
**Lane 1 :** Rat brain tissue extract

**Lane 2 :** Neuro-2a Cells

### Secondary

**All lanes :** Goat anti-rabbit IgG (H+L), HRP conjugated at 0.4 µg/ml

Developed using the ECL technique.



Immunocytochemistry - Anti-S1P1/EDG1 antibody (ab11424)

Immunocytochemical analysis of Neuro-2a cells, labeling

S1P1/EDG1 with ab11424. Cells were fixed in 4%

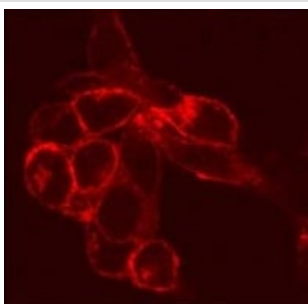
paraformaldehyde for 10 minutes, permeabilized with 0.1% Triton™ X-100 for 10 minutes, and blocked with 1% BSA for 1 hour at room temperature. Immunostaining with anti-EDG1 diluted 2µg/ml in 0.1% BSA for 3 hours at room temperature.

Green staining - ab11424

Blue staining - DAPI for nuclear localization

Red staining - F-actin

The right-most image is a control (no primary antibody staining).



Immunocytochemistry/ Immunofluorescence - Anti-S1P1/EDG1 antibody (ab11424)

ab11424 staining S1P1/EDG1 in transfected CCL39 cells by Immunocytochemistry/ Immunofluorescence.

## **Our Abpromise to you: Quality guaranteed and expert technical support**

---

- Replacement or refund for products not performing as stated on the datasheet
- Valid for 12 months from date of delivery
- Response to your inquiry within 24 hours
  
- We provide support in Chinese, English, French, German, Japanese and Spanish
- Extensive multi-media technical resources to help you
- We investigate all quality concerns to ensure our products perform to the highest standards

If the product does not perform as described on this datasheet, we will offer a refund or replacement. For full details of the Abpromise, please visit <https://www.abcam.com/abpromise> or contact our technical team.

## **Terms and conditions**

---

- Guarantee only valid for products bought direct from Abcam or one of our authorized distributors