

## Product datasheet

### Anti-S1P1/EDG1 antibody [EPR21202] **ab233386**

Recombinant **RabMAb**

[2 References](#) [8 Images](#)

#### Overview

<b>Product name</b>	Anti-S1P1/EDG1 antibody [EPR21202]
<b>Description</b>	Rabbit monoclonal [EPR21202] to S1P1/EDG1
<b>Host species</b>	Rabbit
<b>Specificity</b>	WB is not recommended for mouse samples.
<b>Tested applications</b>	<b>Suitable for:</b> WB, IHC-P <b>Unsuitable for:</b> Flow Cyt, ICC/IF or IP
<b>Species reactivity</b>	<b>Reacts with:</b> Mouse, Human
<b>Immunogen</b>	Synthetic peptide. This information is proprietary to Abcam and/or its suppliers.
<b>Positive control</b>	WB: Jurkat and BxPC-3 whole cell lysates. IHC-P: Human colon, diffuse large B-cell lymphoma and kidney tissue; Mouse kidney, cerebral cortex and spleen tissue.
<b>General notes</b>	<p>This product is a recombinant monoclonal antibody, which offers several advantages including:</p> <ul style="list-style-type: none"> <li>- High batch-to-batch consistency and reproducibility</li> <li>- Improved sensitivity and specificity</li> <li>- Long-term security of supply</li> <li>- Animal-free production</li> </ul> <p>For more information <a href="#">see here</a>.</p> <p>Our RabMAb<sup>®</sup> technology is a patented hybridoma-based technology for making rabbit monoclonal antibodies. For details on our patents, please refer to <a href="#">RabMAb<sup>®</sup> patents</a>.</p>

#### Properties

<b>Form</b>	Liquid
<b>Storage instructions</b>	Shipped at 4°C. Store at +4°C short term (1-2 weeks). Upon delivery aliquot. Store at -20°C long term. Avoid freeze / thaw cycle.
<b>Storage buffer</b>	pH: 7.2 Preservative: 0.01% Sodium azide Constituents: PBS, 40% Glycerol (glycerin, glycerine), 0.05% BSA
<b>Purity</b>	Protein A purified
<b>Clonality</b>	Monoclonal

Clone number                      EPR21202

Isotype                                IgG

## Applications

**The Abpromise guarantee**                      Our **Abpromise guarantee** covers the use of ab233386 in the following tested applications. The application notes include recommended starting dilutions; optimal dilutions/concentrations should be determined by the end user.

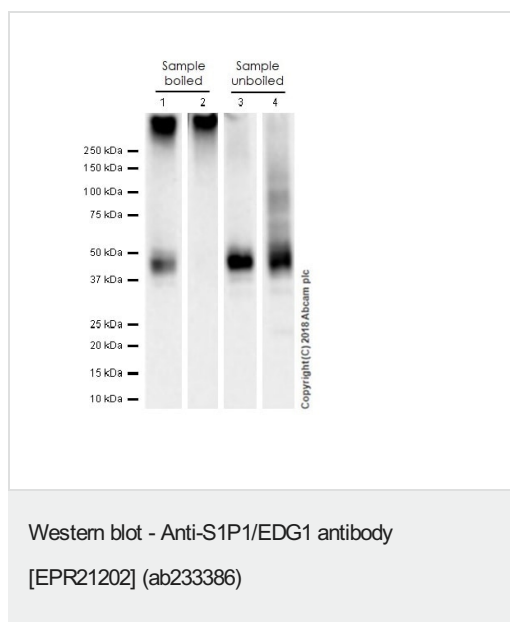
Application	Abreviews	Notes
WB		1/1000. Detects a band of approximately 43 kDa (predicted molecular weight: 43 kDa). Not recommended for mouse.  Please do not boil the sample before loading the gel.
IHC-P		1/1000. Perform heat mediated antigen retrieval with Tris/EDTA buffer pH 9.0 before commencing with IHC staining protocol.

**Application notes**                                Is unsuitable for Flow Cyt, ICC/IF or IP.

## Target

<b>Function</b>	Receptor for the lysosphingolipid sphingosine 1-phosphate (S1P). S1P is a bioactive lysophospholipid that elicits diverse physiological effect on most types of cells and tissues. This inducible epithelial cell G-protein-coupled receptor may be involved in the processes that regulate the differentiation of endothelial cells. Seems to be coupled to the G(i) subclass of heteromeric G proteins.
<b>Tissue specificity</b>	Endothelial cells, and to a lesser extent, in vascular smooth muscle cells, fibroblasts, melanocytes, and cells of epithelioid origin.
<b>Sequence similarities</b>	Belongs to the G-protein coupled receptor 1 family.
<b>Post-translational modifications</b>	S1P-induced endothelial cell migration requires the PKB/AKT1-mediated phosphorylation of the third intracellular loop at the Thr-236 residue.
<b>Cellular localization</b>	Cell membrane.

## Images



**All lanes :** Anti-S1P1/EDG1 antibody [EPR21202] (ab233386) at 1/1000 dilution

**Lanes 1 & 3 :** Jurkat (human T cell leukemia cell line from peripheral blood) whole cell lysate with NFDm/TBST

**Lanes 2 & 4 :** BxPC-3 (human pancreas adenocarcinoma cell line) whole cell lysate with NFDm/TBST

Lysates/proteins at 20 µg per lane.

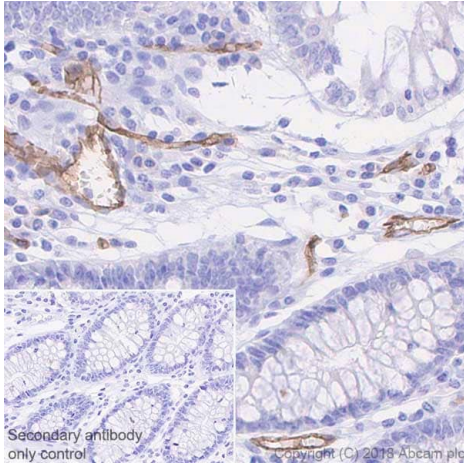
Blocking peptides at 5 % per lane.

### Secondary

**All lanes :** Goat Anti-Rabbit IgG H&L (HRP) (**ab97051**) at 1/100000 dilution (Goat Anti-Rabbit IgG, (H+L), Peroxidase conjugated)

**Predicted band size:** 43 kDa

**Exposure time:** 114 seconds

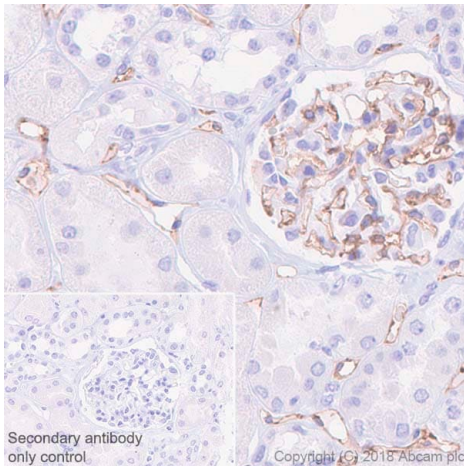


Immunohistochemistry (Formalin/PFA-fixed paraffin-embedded sections) - Anti-S1P1/EDG1 antibody [EPR21202] (ab233386)

Immunohistochemical analysis of paraffin-embedded human colon tissue labeling S1P1/EDG1 with ab233386 at 1/1000 dilution, followed by a ready to use Goat Anti-Rabbit IgG H&L (HRP). Membranous and cytoplasmic staining in endothelial cells of human colon (PMID:25588843) is observed. Counterstained with hematoxylin.

**Secondary antibody only control:** Used PBS instead of primary antibody, secondary antibody is a ready to use Goat Anti-Rabbit IgG H&L (HRP).

Perform heat mediated antigen retrieval using **ab93684** (Tris/EDTA buffer, pH 9.0).

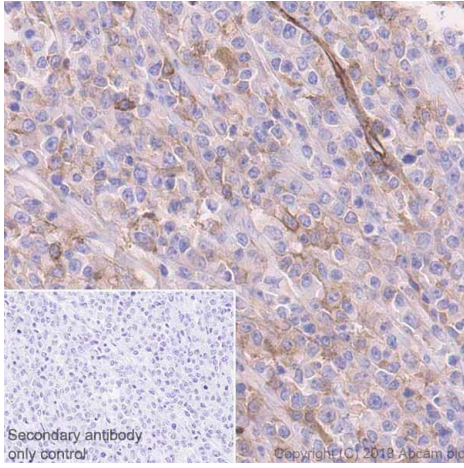


Immunohistochemistry (Formalin/PFA-fixed paraffin-embedded sections) - Anti-S1P1/EDG1 antibody [EPR21202] (ab233386)

Immunohistochemical analysis of paraffin-embedded human kidney tissue labeling S1P1/EDG1 with ab233386 at 1/1000 dilution, followed by a ready to use Goat Anti-Rabbit IgG H&L (HRP). Membranous and cytoplasmic staining in endothelial cells of human kidney (PMID:25588843) is observed. Counterstained with hematoxylin.

**Secondary antibody only control:** Used PBS instead of primary antibody, secondary antibody is a ready to use Goat Anti-Rabbit IgG H&L (HRP).

Perform heat mediated antigen retrieval using **ab93684** (Tris/EDTA buffer, pH 9.0).

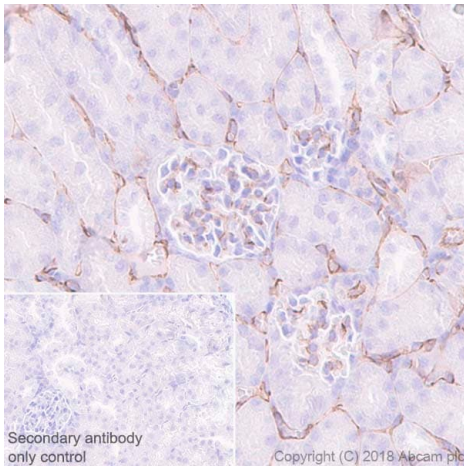


Immunohistochemistry (Formalin/PFA-fixed paraffin-embedded sections) - Anti-S1P1/EDG1 antibody [EPR21202] (ab233386)

Immunohistochemical analysis of paraffin-embedded human diffuse large B-cell lymphoma tissue labeling S1P1/EDG1 with ab233386 at 1/1000 dilution, followed by a ready to use Goat Anti-Rabbit IgG H&L (HRP). Membranous and cytoplasmic in endothelial cells and tumor cells of human diffuse large B-cell lymphoma (PMID: 22745305) is observed. Counterstained with hematoxylin.

**Secondary antibody only control:** Used PBS instead of primary antibody, secondary antibody is a ready to use Goat Anti-Rabbit IgG H&L (HRP).

Perform heat mediated antigen retrieval using [ab93684](#) (Tris/EDTA buffer, pH 9.0).



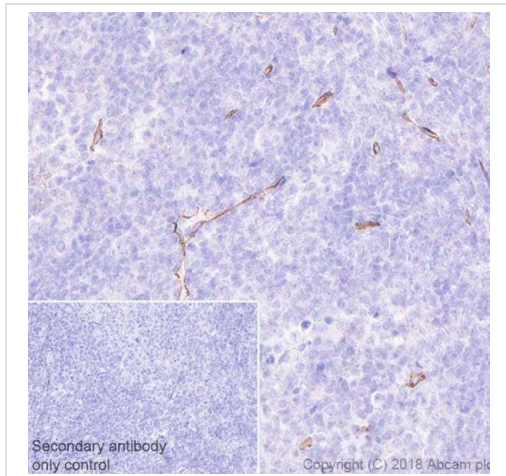
Immunohistochemistry (Formalin/PFA-fixed paraffin-embedded sections) - Anti-S1P1/EDG1 antibody [EPR21202] (ab233386)

Immunohistochemical analysis of paraffin-embedded mouse kidney tissue labeling S1P1/EDG1 with ab233386 at 1/1000 dilution, followed by a ready to use Goat Anti-Rabbit IgG H&L (HRP). Membranous and cytoplasmic in endothelial cells of mouse kidney (PMID: 25588843) is observed. Counterstained with hematoxylin.

**Secondary antibody only control:** Used PBS instead of primary antibody, secondary antibody is a ready to use Goat Anti-Rabbit IgG H&L (HRP).

Perform heat mediated antigen retrieval using [ab93684](#) (Tris/EDTA buffer, pH 9.0).



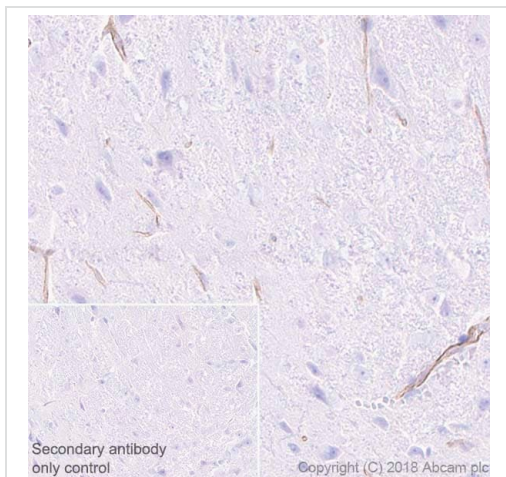


Immunohistochemistry (Formalin/PFA-fixed paraffin-embedded sections) - Anti-S1P1/EDG1 antibody [EPR21202] (ab233386)

Immunohistochemical analysis of paraffin-embedded mouse spleen tissue labeling S1P1/EDG1 with ab233386 at 1/1000 dilution, followed by a ready to use Goat Anti-Rabbit IgG H&L (HRP). Membranous and cytoplasmic in endothelial cells of mouse spleen(PMID: 25588843) is observed. Counterstained with hematoxylin.

**Secondary antibody only control:** Used PBS instead of primary antibody, secondary antibody is a ready to use Goat Anti-Rabbit IgG H&L (HRP).

Perform heat mediated antigen retrieval using **ab93684** (Tris/EDTA buffer, pH 9.0).



Immunohistochemistry (Formalin/PFA-fixed paraffin-embedded sections) - Anti-S1P1/EDG1 antibody [EPR21202] (ab233386)

Immunohistochemical analysis of paraffin-embedded mouse cerebral cortex tissue labeling S1P1/EDG1 with ab233386 at 1/1000 dilution, followed by a ready to use Goat Anti-Rabbit IgG H&L (HRP). Membranous and cytoplasmic in endothelial cells of mouse cerebral cortex (PMID: 25588843) is observed.

Counterstained with hematoxylin.

**Secondary antibody only control:** Used PBS instead of primary antibody, secondary antibody is a ready to use Goat Anti-Rabbit IgG H&L (HRP).

Perform heat mediated antigen retrieval using **ab93684** (Tris/EDTA buffer, pH 9.0).

### Why choose a recombinant antibody?



**Research with confidence**  
Consistent and reproducible results



**Long-term and scalable supply**  
Recombinant technology



**Success from the first experiment**  
Confirmed specificity



**Ethical standards compliant**  
Animal-free production

Anti-S1P1/EDG1 antibody [EPR21202] (ab233386)

**Please note:** All products are "FOR RESEARCH USE ONLY. NOT FOR USE IN DIAGNOSTIC PROCEDURES"

### **Our Abpromise to you: Quality guaranteed and expert technical support**

---

- Replacement or refund for products not performing as stated on the datasheet
- Valid for 12 months from date of delivery
- Response to your inquiry within 24 hours
- We provide support in Chinese, English, French, German, Japanese and Spanish
- Extensive multi-media technical resources to help you
- We investigate all quality concerns to ensure our products perform to the highest standards

If the product does not perform as described on this datasheet, we will offer a refund or replacement. For full details of the Abpromise, please visit <https://www.abcam.com/abpromise> or contact our technical team.

### **Terms and conditions**

---

- Guarantee only valid for products bought direct from Abcam or one of our authorized distributors