

Anti-SAE1 antibody [EPR15397(B)] - BSA and Azide free ab232618

Recombinant RabMAb

4 Images

Overview

Product name	Anti-SAE1 antibody [EPR15397(B)] - BSA and Azide free
Description	Rabbit monoclonal [EPR15397(B)] to SAE1 - BSA and Azide free
Host species	Rabbit
Tested applications	Suitable for: WB, ICC/IF
Species reactivity	Reacts with: Mouse, Human
Immunogen	Synthetic peptide. This information is proprietary to Abcam and/or its suppliers.
Positive control	ICC/IF: MCF7 cells.
General notes	ab232618 is the carrier-free version of ab185949 .

Our **carrier-free** antibodies are typically supplied in a PBS-only formulation, purified and free of BSA, sodium azide and glycerol. The carrier-free buffer and high concentration allow for increased conjugation efficiency.

This conjugation-ready format is designed for use with fluorochromes, metal isotopes, oligonucleotides, and enzymes, which makes them ideal for antibody labelling, functional and cell-based assays, flow-based assays (e.g. mass cytometry) and Multiplex Imaging applications.

Use our **conjugation kits** for antibody conjugates that are ready-to-use in as little as 20 minutes with <1 minute hands-on-time and 100% antibody recovery: available for fluorescent dyes, HRP, biotin and gold.

This product is compatible with the Maxpar[®] Antibody Labeling Kit from Fluidigm, without the need for antibody preparation. Maxpar[®] is a trademark of Fluidigm Canada Inc.

This product is a recombinant monoclonal antibody, which offers several advantages including:

- High batch-to-batch consistency and reproducibility
- Improved sensitivity and specificity
- Long-term security of supply
- Animal-free production

For more information [see here](#).

Our RabMAb[®] technology is a patented hybridoma-based technology for making rabbit monoclonal antibodies. For details on our patents, please refer to [RabMAb[®] patents](#).

Properties

Form	Liquid
Storage instructions	Shipped at 4°C. Store at +4°C. Do Not Freeze.
Storage buffer	pH: 7.2 Constituent: PBS
Carrier free	Yes
Purity	Protein A purified
Clonality	Monoclonal
Clone number	EPR15397(B)
Isotype	IgG

Applications

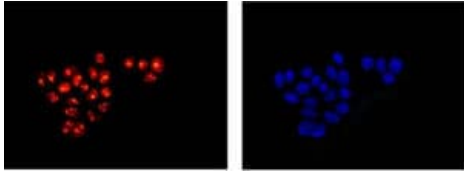
The Abpromise guarantee Our **Abpromise guarantee** covers the use of ab232618 in the following tested applications. The application notes include recommended starting dilutions; optimal dilutions/concentrations should be determined by the end user.

Application	Abreviews	Notes
WB		Use at an assay dependent concentration. Detects a band of approximately 38 kDa (predicted molecular weight: 38 kDa).
ICC/IF		Use at an assay dependent concentration.

Target

Function	The heterodimer acts as a E1 ligase for SUMO1, SUMO2, SUMO3, and probably SUMO4. It mediates ATP-dependent activation of SUMO proteins followed by formation of a thioester bond between a SUMO protein and a conserved active site cysteine residue on UBA2/SAE2.
Tissue specificity	Expression level increases during S phase and drops in G2 phase (at protein level).
Pathway	Protein modification; protein sumoylation.
Sequence similarities	Belongs to the ubiquitin-activating E1 family.
Post-translational modifications	Phosphorylated upon DNA damage, probably by ATM or ATR.
Cellular localization	Nucleus.

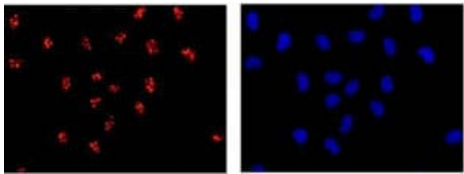
Images



Immunocytochemistry/ Immunofluorescence - Anti-SAE1 antibody [EPR15397(B)] - BSA and Azide free (ab232618)

Immunofluorescent analysis of 4% paraformaldehyde-fixed MCF7 (Human breast adenocarcinoma cell line) cells labeling SAE1 with **ab185949** at 1/100 dilution (red). Secondary antibody is a Goat anti-rabbit IgG (Alexa Fluor®555) at 1/200 dilution. Counterstain: DAPI (blue).

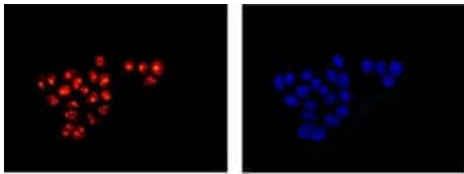
This data was developed using the same antibody clone in a different buffer formulation containing PBS, BSA, glycerol, and sodium azide (**ab185949**).



Immunocytochemistry/ Immunofluorescence - Anti-SAE1 antibody [EPR15397(B)] - BSA and Azide free (ab232618)

Immunofluorescent analysis of -20° acetone-fixed HeLa cells labeling SAE1 with **ab185949** at 1/100 dilution. Secondary ab: Goat anti rabbit IgG (Alexa Fluor®555) at 1/200 dilution. Counter stain: Dapi (blue).

This data was developed using the same antibody clone in a different buffer formulation containing PBS, BSA, glycerol, and sodium azide (**ab185949**).

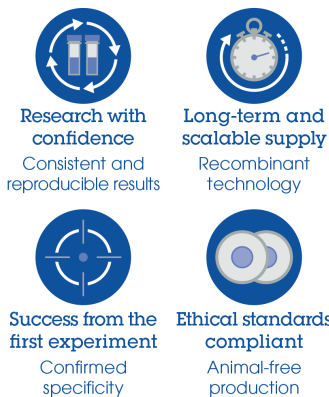


Immunocytochemistry/ Immunofluorescence - Anti-SAE1 antibody [EPR15397(B)] - BSA and Azide free (ab232618)

Immunofluorescent analysis of 4% paraformaldehyde-fixed MCF7 (Human breast adenocarcinoma cell line) cells labeling SAE1 with **ab185949** at 1/100 dilution (red). Secondary antibody is a Goat anti-rabbit IgG (Alexa Fluor®555) at 1/200 dilution. Counterstain: DAPI (blue).

This data was developed using the same antibody clone in a different buffer formulation containing PBS, BSA, glycerol, and sodium azide (**ab185949**).

Why choose a recombinant antibody?



Anti-SAE1 antibody [EPR15397(B)] - BSA and Azide free (ab232618)

Our Abpromise to you: Quality guaranteed and expert technical support

- Replacement or refund for products not performing as stated on the datasheet
- Valid for 12 months from date of delivery
- Response to your inquiry within 24 hours
- We provide support in Chinese, English, French, German, Japanese and Spanish
- Extensive multi-media technical resources to help you
- We investigate all quality concerns to ensure our products perform to the highest standards

If the product does not perform as described on this datasheet, we will offer a refund or replacement. For full details of the Abpromise, please visit <https://www.abcam.com/abpromise> or contact our technical team.

Terms and conditions

- Guarantee only valid for products bought direct from Abcam or one of our authorized distributors