



## Product datasheet

### Anti-SAF-B2 antibody [6F7] ab67344

1 Image

#### Overview

<b>Product name</b>	Anti-SAF-B2 antibody [6F7]
<b>Description</b>	Mouse monoclonal [6F7] to SAF-B2
<b>Host species</b>	Mouse
<b>Tested applications</b>	<b>Suitable for:</b> IHC-P
<b>Species reactivity</b>	<b>Reacts with:</b> Human
<b>Immunogen</b>	Synthetic peptide corresponding to Human SAF-B2 aa 345-357. Sequence: PEARDSKEDGRKF <div>  <a href="#">Run BLAST with</a>  <a href="#">Run BLAST with</a> </div>
<b>Positive control</b>	Human brain cortex tissue.
<b>General notes</b>	<p>The Life Science industry has been in the grips of a reproducibility crisis for a number of years. Abcam is leading the way in addressing this with our range of recombinant monoclonal antibodies and knockout edited cell lines for gold-standard validation. Please check that this product meets your needs before purchasing.</p> <p>If you have any questions, special requirements or concerns, please send us an inquiry and/or contact our Support team ahead of purchase. Recommended alternatives for this product can be found below, along with publications, customer reviews and Q&amp;As</p>

#### Properties

<b>Form</b>	Liquid
<b>Storage instructions</b>	Shipped at 4°C. Upon delivery aliquot. Store at -20°C. Avoid freeze / thaw cycle.
<b>Storage buffer</b>	pH: 7.4 Constituent: PBS
<b>Purity</b>	Protein G purified
<b>Clonality</b>	Monoclonal
<b>Clone number</b>	6F7
<b>Isotype</b>	IgG1

#### Applications

**The Abpromise guarantee**

Our **Abpromise guarantee** covers the use of ab67344 in the following tested applications.

The application notes include recommended starting dilutions; optimal dilutions/concentrations should be determined by the end user.

Application	Abreviews	Notes
IHC-P		

**Application notes**

ICC/IF: Use at an assay dependent dilution.

IHC-P: Use at a concentration of 5 µg/ml.

IP: Use at an assay dependent dilution.

WB: Use at an assay dependent dilution. Predicted molecular weight: 108 kDa.

N.B. on SDS PAGE gels, Scaffold attachment factor B2 runs as an approximately 130 kDa protein. This aberrant migration is due to a large number of charged amino acid residues.

Not yet tested in other applications.

Optimal dilutions/concentrations should be determined by the end user.

**Target****Function**

Binds to scaffold/matrix attachment region (S/MAR) DNA. Can function as an estrogen receptor corepressor and can also inhibit cell proliferation.

**Tissue specificity**

Expressed at high levels in the CNS and at low levels in the liver. Expressed in a wide number of breast cancer cell lines.

**Sequence similarities**

Contains 1 RRM (RNA recognition motif) domain.

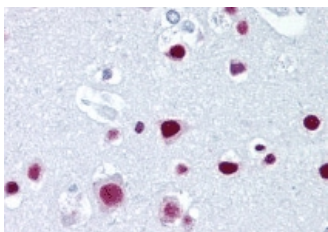
Contains 1 SAP domain.

**Post-translational modifications**

Phosphorylated upon DNA damage, probably by ATM or ATR.

**Cellular localization**

Cytoplasm. Nucleus.

**Images**

ab67344 at 5µg/ml dilution staining SAF-B2 in human brain cortex by Immunohistochemistry, Formalin-fixed, Paraffin-embedded tissue.

Immunohistochemistry (Formalin/PFA-fixed paraffin-embedded sections) - Anti-SAF-B2 antibody [6F7] (ab67344)

### **Our Abpromise to you: Quality guaranteed and expert technical support**

---

- Replacement or refund for products not performing as stated on the datasheet
- Valid for 12 months from date of delivery
- Response to your inquiry within 24 hours
  
- We provide support in Chinese, English, French, German, Japanese and Spanish
- Extensive multi-media technical resources to help you
- We investigate all quality concerns to ensure our products perform to the highest standards

If the product does not perform as described on this datasheet, we will offer a refund or replacement. For full details of the Abpromise, please visit <https://www.abcam.com/abpromise> or contact our technical team.

### **Terms and conditions**

---

- Guarantee only valid for products bought direct from Abcam or one of our authorized distributors