

# Anti-Salivary alpha amylase antibody ab125230

[1 References](#) [3 Images](#)

### Overview

<b>Product name</b>	Anti-Salivary alpha amylase antibody
<b>Description</b>	Rabbit polyclonal to Salivary alpha amylase
<b>Host species</b>	Rabbit
<b>Tested applications</b>	<b>Suitable for:</b> WB, IHC-P
<b>Species reactivity</b>	<b>Reacts with:</b> Mouse, Rat, Human
<b>Immunogen</b>	Synthetic peptide corresponding to Human Salivary alpha amylase (N terminal).
<b>Positive control</b>	IHC-P: Rat spleen tissue. WB: Rat and mouse pancreas tissue lysate, human PANC-1 whole cell lysates. Rat liver tissue lysate, Rat small intestine tissue lysate
<b>General notes</b>	<p>The Life Science industry has been in the grips of a reproducibility crisis for a number of years. Abcam is leading the way in addressing this with our range of recombinant monoclonal antibodies and knockout edited cell lines for gold-standard validation. Please check that this product meets your needs before purchasing.</p> <p>If you have any questions, special requirements or concerns, please send us an inquiry and/or contact our Support team ahead of purchase. Recommended alternatives for this product can be found below, along with publications, customer reviews and Q&amp;As</p>

### Properties

<b>Form</b>	Liquid
<b>Storage instructions</b>	Shipped at 4°C. Store at +4°C short term (1-2 weeks). Upon delivery aliquot. Store at -20°C long term.
<b>Storage buffer</b>	Preservatives: 0.025% Thimerosal (merthiolate), 0.025% Sodium azide Constituents: 2.5% BSA, 0.45% Sodium chloride, 0.1% Dibasic monohydrogen sodium phosphate
<b>Purity</b>	Immunogen affinity purified
<b>Clonality</b>	Polyclonal
<b>Isotype</b>	IgG

### Applications

## The Abpromise guarantee

Our **Abpromise guarantee** covers the use of ab125230 in the following tested applications.

The application notes include recommended starting dilutions; optimal dilutions/concentrations should be determined by the end user.

Application	Abreviews	Notes
WB		Use a concentration of 0.5 - 1 µg/ml. Predicted molecular weight: 57 kDa.
IHC-P		Use a concentration of 1 µg/ml. Perform heat mediated antigen retrieval before commencing with IHC staining protocol.

## Target

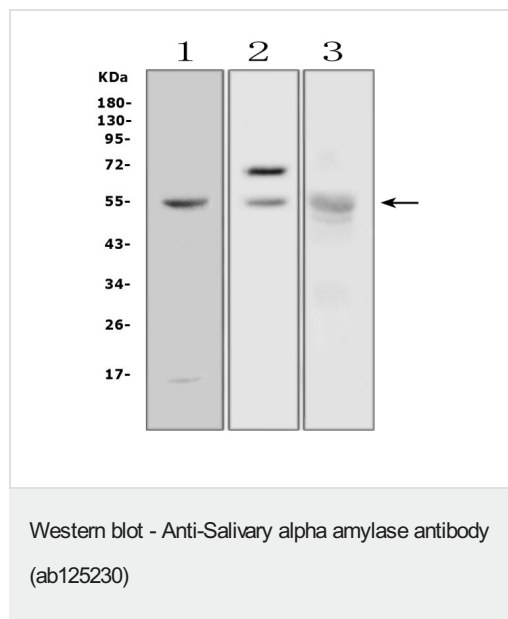
### Sequence similarities

Belongs to the glycosyl hydrolase 13 family.

### Cellular localization

Secreted.

## Images



**All lanes :** Anti-Salivary alpha amylase antibody (ab125230) at 0.5 µg/ml

**Lane 1 :** human PANC-1 whole cell lysates

**Lane 2 :** rat pancreas tissue lysates

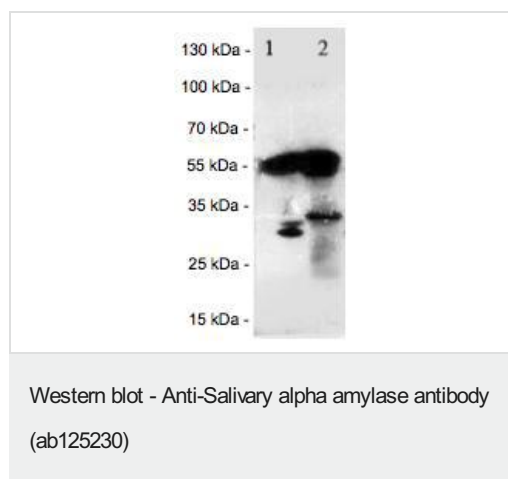
**Lane 3 :** mouse pancreas tissue lysates

Lysates/proteins at 50 µg per lane.

### Secondary

**All lanes :** goat anti-rabbit IgG-HRP at 1/10000 dilution

**Predicted band size:** 57 kDa

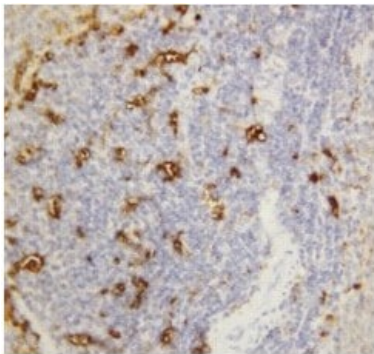


**All lanes :** Anti-Salivary alpha amylase antibody (ab125230) at 1 µg/ml

**Lane 1 :** Rat liver tissue lysate

**Lane 2 :** Rat small intestine tissue lysate

**Predicted band size:** 57 kDa



ab125230 at 1µg/ml staining Alpha Amylase in paraffin embedded Rat Spleen Tissue by immunohistochemistry.

Immunohistochemistry (Formalin/PFA-fixed paraffin-embedded sections) - Anti-Salivary alpha amylase antibody (ab125230)

**Please note:** All products are "FOR RESEARCH USE ONLY. NOT FOR USE IN DIAGNOSTIC PROCEDURES"

### Our Abpromise to you: Quality guaranteed and expert technical support

---

- Replacement or refund for products not performing as stated on the datasheet
- Valid for 12 months from date of delivery
- Response to your inquiry within 24 hours
- We provide support in Chinese, English, French, German, Japanese and Spanish
- Extensive multi-media technical resources to help you
- We investigate all quality concerns to ensure our products perform to the highest standards

If the product does not perform as described on this datasheet, we will offer a refund or replacement. For full details of the Abpromise, please visit <https://www.abcam.com/abpromise> or contact our technical team.

### Terms and conditions

---

- Guarantee only valid for products bought direct from Abcam or one of our authorized distributors