


Product datasheet

Anti-SAMM50/SAM50 antibody ab246987

[1 References](#) [8 Images](#)

Overview

Product name	Anti-SAMM50/SAM50 antibody
Description	Rabbit polyclonal to SAMM50/SAM50
Host species	Rabbit
Tested applications	Suitable for: WB, IHC-P, ICC/IF
Species reactivity	Reacts with: Mouse, Rat, Human Predicted to work with: Cow 
Immunogen	Recombinant fragment corresponding to Human SAMM50/SAM50 aa 1-150. Database link: Q9Y512 Run BLAST with Run BLAST with
Positive control	WB: HL-60, NIH/3T3 and NBT-II whole cell lysates. IHC-P: Human parathyroid gland, pancreas, small intestine, testis and kidney tissue. ICC/IF: A431 cells.
General notes	<p>The Life Science industry has been in the grips of a reproducibility crisis for a number of years. Abcam is leading the way in addressing this with our range of recombinant monoclonal antibodies and knockout edited cell lines for gold-standard validation. Please check that this product meets your needs before purchasing.</p> <p>If you have any questions, special requirements or concerns, please send us an inquiry and/or contact our Support team ahead of purchase. Recommended alternatives for this product can be found below, along with publications, customer reviews and Q&As</p>

Properties

Form	Liquid
Storage instructions	Shipped at 4°C. Store at +4°C short term (1-2 weeks). Upon delivery aliquot. Store at -20°C long term. Avoid freeze / thaw cycle.
Storage buffer	pH: 7.20 Preservative: 0.02% Sodium azide Constituents: 40% Glycerol (glycerin, glycerine), PBS
Purity	Immunogen affinity purified
Clonality	Polyclonal
Isotype	IgG

Applications

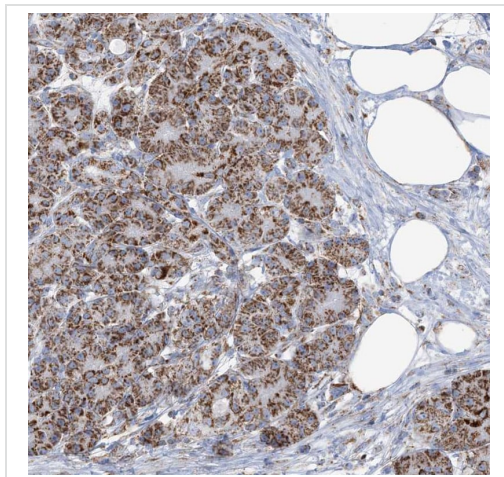
The Abpromise guarantee Our **Abpromise guarantee** covers the use of ab246987 in the following tested applications. The application notes include recommended starting dilutions; optimal dilutions/concentrations should be determined by the end user.

Application	Abreviews	Notes
WB		Use a concentration of 0.04 - 0.4 µg/ml. Predicted molecular weight: 52 kDa.
IHC-P		1/1000 - 1/2500. Perform heat mediated antigen retrieval with citrate buffer pH 6 before commencing with IHC staining protocol.
ICC/IF		Use a concentration of 0.25 - 2 µg/ml. Fixation/Permeabilization: PFA/Triton X-100

Target

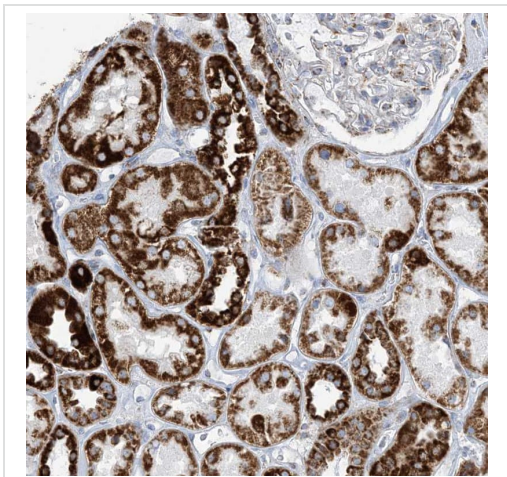
Function	May be required for the assembly pathway of mitochondrial outer membrane proteins.
Sequence similarities	Belongs to the SAM50/omp85 family.
Domain	Its C-terminal part seems to contain many membrane-spanning sided beta-sheets, that have the potential to adopt a transmembrane beta-barrel type structure.
Cellular localization	Mitochondrion outer membrane. Cytoplasm.

Images



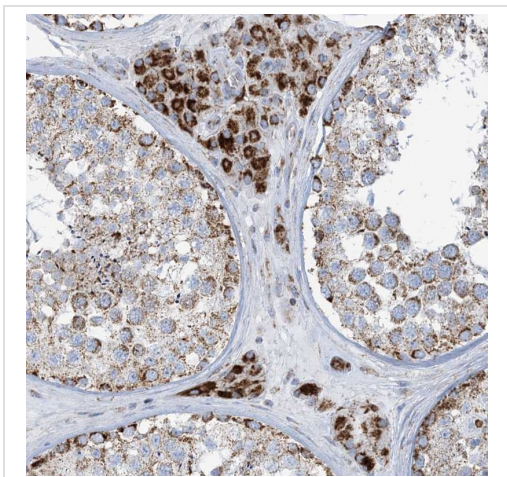
Formalin-fixed, paraffin-embedded human pancreas tissue stained for SAMM50 with ab246987 at a 1/1000 dilution in immunohistochemical analysis.

Immunohistochemistry (Formalin/PFA-fixed paraffin-embedded sections) - Anti-SAMM50/SAM50 antibody (ab246987)



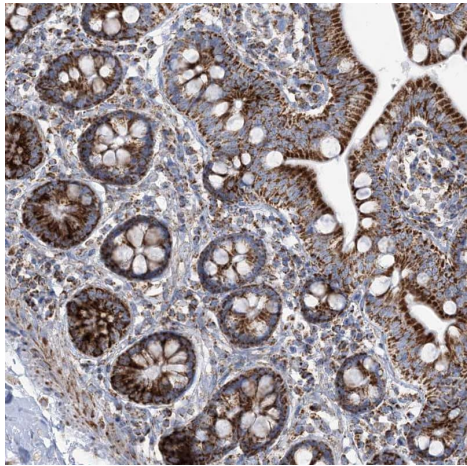
Formalin-fixed, paraffin-embedded human kidney tissue stained for SAMM50 with ab246987 at a 1/1000 dilution in immunohistochemical analysis.

Immunohistochemistry (Formalin/PFA-fixed paraffin-embedded sections) - Anti-SAMM50/SAM50 antibody (ab246987)



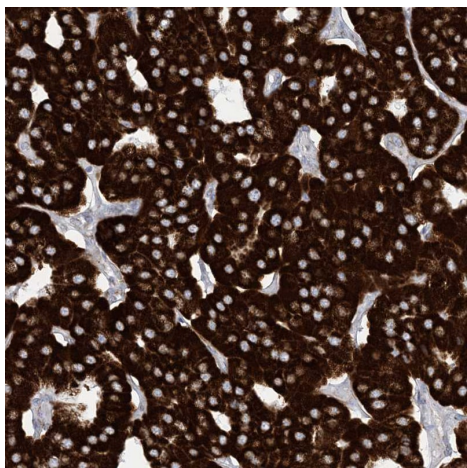
Formalin-fixed, paraffin-embedded human testis tissue stained for SAMM50 with ab246987 at a 1/1000 dilution in immunohistochemical analysis.

Immunohistochemistry (Formalin/PFA-fixed paraffin-embedded sections) - Anti-SAMM50/SAM50 antibody (ab246987)



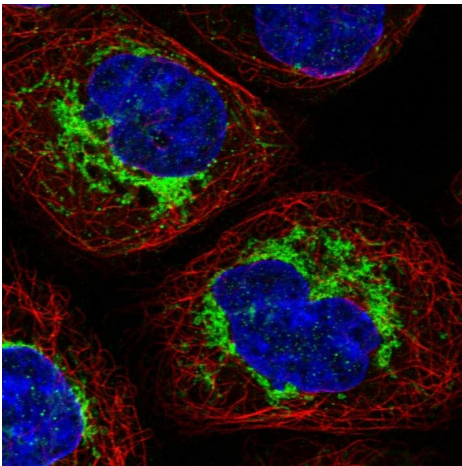
Formalin-fixed, paraffin-embedded human small intestine tissue stained for SAMM50 with ab246987 at a 1/1000 dilution in immunohistochemical analysis.

Immunohistochemistry (Formalin/PFA-fixed paraffin-embedded sections) - Anti-SAMM50/SAM50 antibody (ab246987)



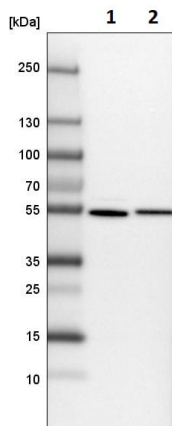
Formalin-fixed, paraffin-embedded human parathyroid gland tissue stained for SAMM50 with ab246987 at a 1/1000 dilution in immunohistochemical analysis.

Immunohistochemistry (Formalin/PFA-fixed paraffin-embedded sections) - Anti-SAMM50/SAM50 antibody (ab246987)



Immunocytochemistry/ Immunofluorescence - Anti-SAMM50/SAM50 antibody (ab246987)

PFA-fixed, Triton X-100 permeabilized A431 (human epidermoid carcinoma cell line) cells stained for SAMM50/SAM50 (green) using ab246987 at 4 $\mu\text{g/ml}$ in ICC/IF.



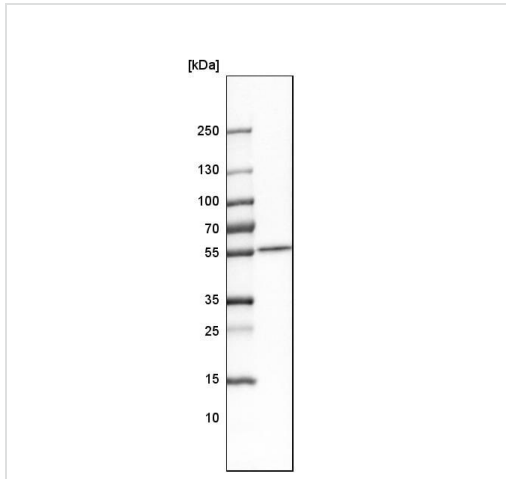
Western blot - Anti-SAMM50/SAM50 antibody (ab246987)

All lanes : Anti-SAMM50/SAM50 antibody (ab246987) at 0.4 $\mu\text{g/ml}$

Lane 1 : NIH/3T3 (mouse embryo fibroblast cell line) whole cell lysate

Lane 2 : NBT-II (rat Wistar bladder tumor cell line) whole cell lysate

Predicted band size: 52 kDa



Western blot - Anti-SAMM50/SAM50 antibody
(ab246987)

Anti-SAMM50/SAM50 antibody (ab246987) at 0.4 μ g + HL-60
(human promyelocytic leukemia cell line) whole cell lysate

Predicted band size: 52 kDa

Please note: All products are "FOR RESEARCH USE ONLY. NOT FOR USE IN DIAGNOSTIC PROCEDURES"

Our Abpromise to you: Quality guaranteed and expert technical support

- Replacement or refund for products not performing as stated on the datasheet
- Valid for 12 months from date of delivery
- Response to your inquiry within 24 hours
- We provide support in Chinese, English, French, German, Japanese and Spanish
- Extensive multi-media technical resources to help you
- We investigate all quality concerns to ensure our products perform to the highest standards

If the product does not perform as described on this datasheet, we will offer a refund or replacement. For full details of the Abpromise, please visit <https://www.abcam.com/abpromise> or contact our technical team.

Terms and conditions

- Guarantee only valid for products bought direct from Abcam or one of our authorized distributors