


Product datasheet

Anti-SAMM50/SAM50 antibody [EPR8718] ab133709

Recombinant RabMAb

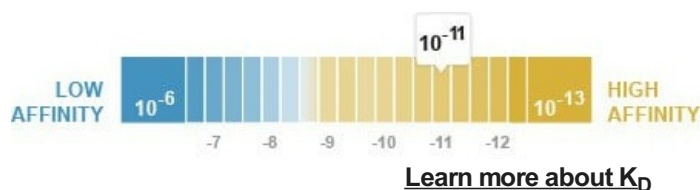
★★★★★ [1 Abreviews](#) [5 References](#) [5 Images](#)

Overview

Product name	Anti-SAMM50/SAM50 antibody [EPR8718]
Description	Rabbit monoclonal [EPR8718] to SAMM50/SAM50
Host species	Rabbit
Tested applications	Suitable for: WB, IHC-P Unsuitable for: ICC/IF or IP
Species reactivity	Reacts with: Human Predicted to work with: Mouse, Rat 
Immunogen	Synthetic peptide. This information is proprietary to Abcam and/or its suppliers.
Positive control	WB: Human fetal heart lysate, A431 cell lysate, HeLa cell lysate, HepG2 cell lysate IHC-P: Human kidney tissue, Human ovarian carcinoma tissue
General notes	<p>This product is a recombinant monoclonal antibody, which offers several advantages including:</p> <ul style="list-style-type: none"> - High batch-to-batch consistency and reproducibility - Improved sensitivity and specificity - Long-term security of supply - Animal-free production <p>For more information see here.</p> <p>Our RabMAb[®] technology is a patented hybridoma-based technology for making rabbit monoclonal antibodies. For details on our patents, please refer to RabMAb[®] patents.</p>

Properties

Form	Liquid
Storage instructions	Shipped at 4°C. Store at -20°C. Stable for 12 months at -20°C.
Dissociation constant (K _D)	K _D = 1.30 x 10 ⁻¹¹ M



Storage buffer	pH: 7.20 Preservative: 0.01% Sodium azide Constituents: 9% PBS, 40% Glycerol (glycerin, glycerine), 0.05% BSA, 50% Tissue culture supernatant
Purity	Protein A purified
Clonality	Monoclonal
Clone number	EPR8718
Isotype	IgG

Applications

The Abpromise guarantee Our **Abpromise guarantee** covers the use of ab133709 in the following tested applications. The application notes include recommended starting dilutions; optimal dilutions/concentrations should be determined by the end user.

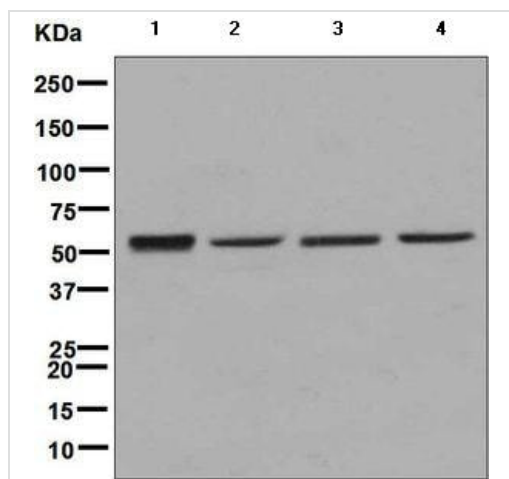
Application	Abreviews	Notes
WB	★★★★★ (1)	1/1000 - 1/10000. Detects a band of approximately 52 kDa (predicted molecular weight: 52 kDa).
IHC-P		1/50 - 1/100. Perform heat mediated antigen retrieval with citrate buffer pH 6 before commencing with IHC staining protocol. Perform antigen retrieval before commencing with IHC staining protocol

Application notes Is unsuitable for ICC/IF or IP.

Target

Function	May be required for the assembly pathway of mitochondrial outer membrane proteins.
Sequence similarities	Belongs to the SAM50/omp85 family.
Domain	Its C-terminal part seems to contain many membrane-spanning sided beta-sheets, that have the potential to adopt a transmembrane beta-barrel type structure.
Cellular localization	Mitochondrion outer membrane. Cytoplasm.

Images



Western blot - Anti-SAMM50/SAM50 antibody [EPR8718] (ab133709)

All lanes : Anti-SAMM50/SAM50 antibody [EPR8718] (ab133709) at 1/1000 dilution

Lane 1 : Human fetal heart tissue lysate

Lane 2 : A431 cell lysate

Lane 3 : HeLa cell lysate

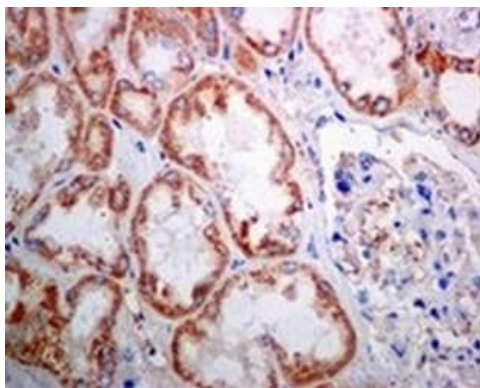
Lane 4 : HepG2 cell lysate

Lysates/proteins at 10 µg per lane.

Secondary

All lanes : Goat anti-rabbit HRP conjugated at 1/2000 dilution

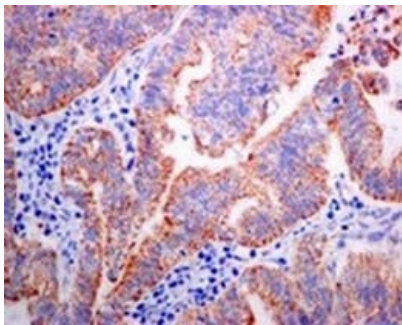
Predicted band size: 52 kDa



Immunohistochemistry (Formalin/PFA-fixed paraffin-embedded sections) - Anti-SAMM50/SAM50 antibody [EPR8718] (ab133709)

ab133709, at 1/50 dilution, staining SAMM50/SAM50 in paraffin embedded Human kidney tissue using immunohistochemical analysis.

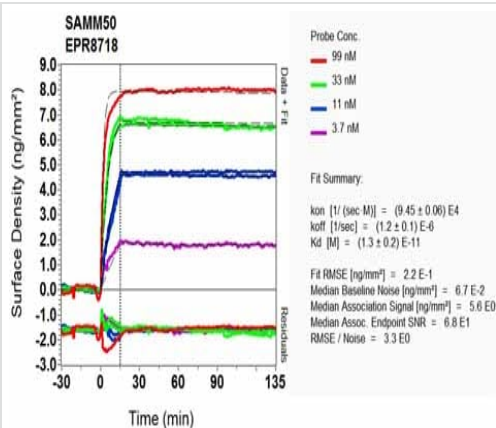
Perform heat mediated antigen retrieval with citrate buffer pH 6 before commencing with IHC staining protocol.



Immunohistochemistry (Formalin/PFA-fixed paraffin-embedded sections) - Anti-SAMM50/SAM50 antibody [EPR8718] (ab133709)

ab133709, at 1/50 dilution, staining SAMM50/SAM50 in paraffin embedded Human ovarian carcinoma tissue using immunohistochemical analysis.

Perform heat mediated antigen retrieval with citrate buffer pH 6 before commencing with IHC staining protocol.



SPR Scanning - Anti-SAMM50/SAM50 antibody [EPR8718] (ab133709)

Equilibrium dissociation constant (K_D)

Learn more about K_D

[Click here to learn more about \$K_D\$](#)

Why choose a recombinant antibody?



Research with confidence
Consistent and reproducible results



Long-term and scalable supply
Recombinant technology



Success from the first experiment
Confirmed specificity



Ethical standards compliant
Animal-free production

Anti-SAMM50/SAM50 antibody [EPR8718]
(ab133709)

Please note: All products are "FOR RESEARCH USE ONLY. NOT FOR USE IN DIAGNOSTIC PROCEDURES"

Our Abpromise to you: Quality guaranteed and expert technical support

- Replacement or refund for products not performing as stated on the datasheet
- Valid for 12 months from date of delivery
- Response to your inquiry within 24 hours
- We provide support in Chinese, English, French, German, Japanese and Spanish
- Extensive multi-media technical resources to help you
- We investigate all quality concerns to ensure our products perform to the highest standards

If the product does not perform as described on this datasheet, we will offer a refund or replacement. For full details of the Abpromise, please visit <https://www.abcam.com/abpromise> or contact our technical team.

Terms and conditions

- Guarantee only valid for products bought direct from Abcam or one of our authorized distributors