


Anti-SAPS3 antibody ab72034

[1 References](#) [2 Images](#)

Overview

Product name	Anti-SAPS3 antibody
Description	Rabbit polyclonal to SAPS3
Host species	Rabbit
Tested applications	Suitable for: WB, IP
Species reactivity	Reacts with: Human Predicted to work with: Chimpanzee, Gorilla 
Immunogen	Synthetic peptide from a region between residue 743 and the C-terminus (residue 793) of human SAPS3,(NP_060782.2).
Positive control	Whole cell lysate from Hela cells.
General notes	<p>The Life Science industry has been in the grips of a reproducibility crisis for a number of years. Abcam is leading the way in addressing this with our range of recombinant monoclonal antibodies and knockout edited cell lines for gold-standard validation. Please check that this product meets your needs before purchasing.</p> <p>If you have any questions, special requirements or concerns, please send us an inquiry and/or contact our Support team ahead of purchase. Recommended alternatives for this product can be found below, along with publications, customer reviews and Q&As</p>

Properties

Form	Liquid
Storage instructions	Shipped at 4°C. Upon delivery aliquot and store at -20°C. Avoid freeze / thaw cycles.
Storage buffer	pH: 6.8 Preservative: 0.09% Sodium azide Constituents: 0.1% BSA, Tris buffered saline
Purity	Immunogen affinity purified
Clonality	Polyclonal
Isotype	IgG

Applications

The Abpromise guarantee

Our **Abpromise guarantee** covers the use of ab72034 in the following tested applications.

The application notes include recommended starting dilutions; optimal dilutions/concentrations should be determined by the end user.

Application	Abreviews	Notes
WB		1/2000 - 1/10000. Detects a band of approximately 120 kDa (predicted molecular weight: 98 kDa).
IP		Use at 2-5 µg/mg of lysate.

Target

Function

Regulatory subunit of protein phosphatase 6 (PP6). May function as a scaffolding PP6 subunit. May have an important role in maintaining immune self-tolerance.

Tissue specificity

Expressed in skeletal muscle, placenta, heart, pancreas, testis, brain, lung, liver, kidney, spleen, thymus, prostate, small intestine, colon and leukocytes.

Sequence similarities

Belongs to the SAPS family.

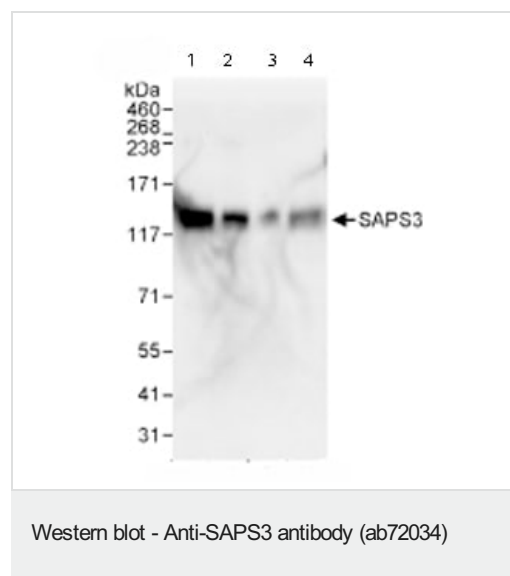
Post-translational modifications

Phosphorylated upon DNA damage, probably by ATM or ATR.

Cellular localization

Cytoplasm. Nucleus.

Images



All lanes : Anti-SAPS3 antibody (ab72034) at 0.02 µg/ml

Lane 1 : Whole cell lysate from Hela cells at 50 µg

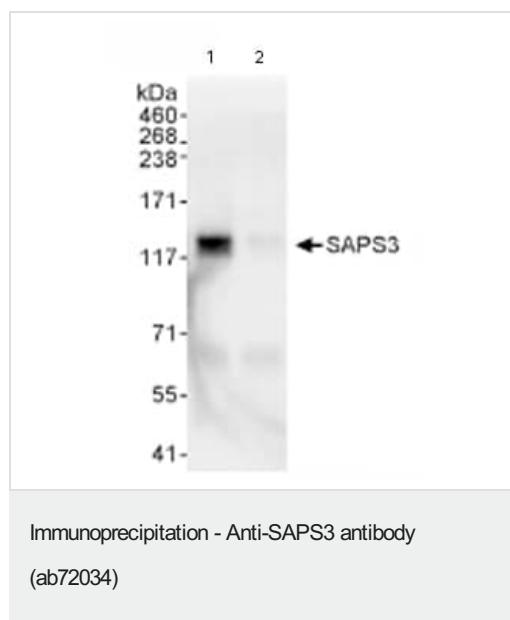
Lane 2 : Whole cell lysate from Hela cells at 15 µg

Lane 3 : Whole cell lysate from Hela cells at 5 µg

Lane 4 : Whole cell lysate from 293T cells at 50 µg

Predicted band size: 98 kDa

Observed band size: 120 kDa



Immunoprecipitation/ Western Blot of SAPS3.

Lane 1: For IP: ab72034 at 3µg/mg whole cell lysate, with ab72034 at 0.04µg/ml for subsequent WB.

Lane 2: Control IgG.

Whole cell lysate from Hela cells at 1mg for IP, 20% of IP loaded.

Chemiluminescence with an exposure time of 3 seconds.

Please note: All products are "FOR RESEARCH USE ONLY. NOT FOR USE IN DIAGNOSTIC PROCEDURES"

Our Abpromise to you: Quality guaranteed and expert technical support

- Replacement or refund for products not performing as stated on the datasheet
- Valid for 12 months from date of delivery
- Response to your inquiry within 24 hours
- We provide support in Chinese, English, French, German, Japanese and Spanish
- Extensive multi-media technical resources to help you
- We investigate all quality concerns to ensure our products perform to the highest standards

If the product does not perform as described on this datasheet, we will offer a refund or replacement. For full details of the Abpromise, please visit <https://www.abcam.com/abpromise> or contact our technical team.

Terms and conditions

- Guarantee only valid for products bought direct from Abcam or one of our authorized distributors