


## Product datasheet

# Anti-SAR1 antibody ab125871

[3 References](#) [2 Images](#)

### Overview

---

<b>Product name</b>	Anti-SAR1 antibody
<b>Description</b>	Rabbit polyclonal to SAR1
<b>Host species</b>	Rabbit
<b>Tested applications</b>	<b>Suitable for:</b> WB, ICC/IF
<b>Species reactivity</b>	<b>Reacts with:</b> Human <b>Predicted to work with:</b> Mouse, Rat, Cow, Pig, Xenopus laevis, Zebrafish 
<b>Immunogen</b>	Recombinant fragment, corresponding to a region within N terminal amino acids 6-180 of Human SAR1 (Q9NR31).
<b>Positive control</b>	293T and A431 whole cell lysates; A431 cells.
<b>General notes</b>	<p>The Life Science industry has been in the grips of a reproducibility crisis for a number of years. Abcam is leading the way in addressing this with our range of recombinant monoclonal antibodies and knockout edited cell lines for gold-standard validation. Please check that this product meets your needs before purchasing.</p> <p>If you have any questions, special requirements or concerns, please send us an inquiry and/or contact our Support team ahead of purchase. Recommended alternatives for this product can be found below, along with publications, customer reviews and Q&amp;As</p>

### Properties

---

<b>Form</b>	Liquid
<b>Storage instructions</b>	Shipped at 4°C. Upon delivery aliquot and store at -20°C or -80°C. Avoid repeated freeze / thaw cycles.
<b>Storage buffer</b>	pH: 7.00 Preservative: 0.01% Thimerosal (merthiolate) Constituents: 78.99% PBS, 1% BSA, 20% Glycerol (glycerin, glycerine)
<b>Purity</b>	Immunogen affinity purified
<b>Purification notes</b>	ab125871 is purified by antigen-affinity chromatography.
<b>Clonality</b>	Polyclonal
<b>Isotype</b>	IgG

## Applications

### The Abpromise guarantee

Our **Abpromise guarantee** covers the use of ab125871 in the following tested applications.

The application notes include recommended starting dilutions; optimal dilutions/concentrations should be determined by the end user.

Application	Abreviews	Notes
WB		1/500 - 1/3000. Predicted molecular weight: 22 kDa.
ICC/IF		1/100 - 1/500.

## Target

### Function

Involved in transport from the endoplasmic reticulum to the Golgi apparatus (By similarity). Required to maintain SEC16A localization at discrete locations on the ER membrane perhaps by preventing its dissociation. SAR1A-GTP-dependent assembly of SEC16A on the ER membrane forms an organized scaffold defining endoplasmic reticulum exit sites (ERES).

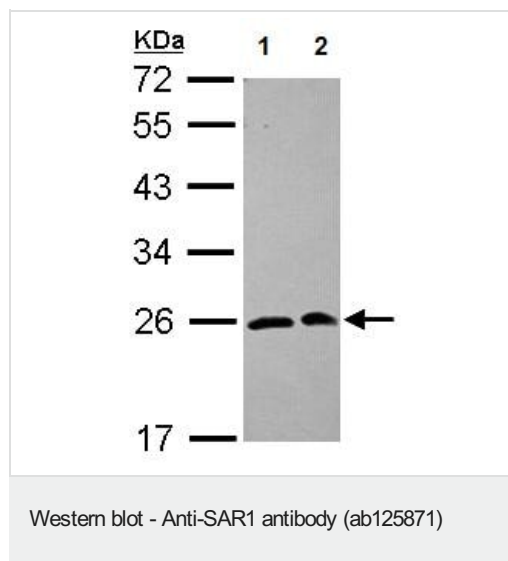
### Sequence similarities

Belongs to the small GTPase superfamily. SAR1 family.

### Cellular localization

Endoplasmic reticulum. Golgi apparatus.

## Images



**All lanes** : Anti-SAR1 antibody (ab125871) at 1/1000 dilution

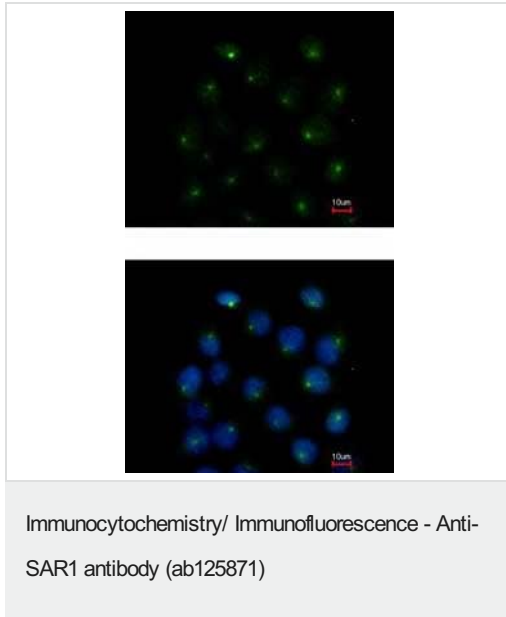
**Lane 1** : 293T whole cell lysate

**Lane 2** : A431 whole cell lysate

Lysates/proteins at 30 µg per lane.

**Predicted band size:** 22 kDa

12% SDS PAGE



ab125871, at 1/500, staining SAR1 in methanol-fixed A431 cells by Immunofluorescence. Lower image is co-stained with Hoechst 33342.

**Please note:** All products are "FOR RESEARCH USE ONLY. NOT FOR USE IN DIAGNOSTIC PROCEDURES"

### Our Abpromise to you: Quality guaranteed and expert technical support

---

- Replacement or refund for products not performing as stated on the datasheet
- Valid for 12 months from date of delivery
- Response to your inquiry within 24 hours
- We provide support in Chinese, English, French, German, Japanese and Spanish
- Extensive multi-media technical resources to help you
- We investigate all quality concerns to ensure our products perform to the highest standards

If the product does not perform as described on this datasheet, we will offer a refund or replacement. For full details of the Abpromise, please visit <https://www.abcam.com/abpromise> or contact our technical team.

### Terms and conditions

---

- Guarantee only valid for products bought direct from Abcam or one of our authorized distributors