


## Product datasheet

# Anti-Sarcomeric Alpha Actinin antibody ab137346

★★★★★ [8 Abreviews](#) [35 References](#) [6 Images](#)

### Overview

<b>Product name</b>	Anti-Sarcomeric Alpha Actinin antibody
<b>Description</b>	Rabbit polyclonal to Sarcomeric Alpha Actinin
<b>Host species</b>	Rabbit
<b>Tested applications</b>	<b>Suitable for:</b> WB, ICC/IF, IHC-P
<b>Species reactivity</b>	<b>Reacts with:</b> Mouse, Rat, Human <b>Predicted to work with:</b> Chicken, Cow, Xenopus laevis, Xenopus tropicalis 
<b>Immunogen</b>	Recombinant fragment corresponding to Human Sarcomeric Alpha Actinin. The immunogen is within the center region of the protein. Database link: <a href="#">P35609</a>
<b>General notes</b>	<p>The Life Science industry has been in the grips of a reproducibility crisis for a number of years. Abcam is leading the way in addressing this with our range of recombinant monoclonal antibodies and knockout edited cell lines for gold-standard validation. Please check that this product meets your needs before purchasing.</p> <p>If you have any questions, special requirements or concerns, please send us an inquiry and/or contact our Support team ahead of purchase. Recommended alternatives for this product can be found below, along with publications, customer reviews and Q&amp;As</p>

### Properties

<b>Form</b>	Liquid
<b>Storage instructions</b>	Shipped at 4°C. Upon delivery aliquot. Store at -20°C or -80°C. Avoid freeze / thaw cycle.
<b>Storage buffer</b>	pH: 7.00 Preservative: 0.025% Proclin 300 Constituents: 78% PBS, 1% BSA, 20% Glycerol (glycerin, glycerine)
<b>Purity</b>	Immunogen affinity purified
<b>Clonality</b>	Polyclonal
<b>Isotype</b>	IgG

### Applications

## The Abpromise guarantee

Our **Abpromise guarantee** covers the use of ab137346 in the following tested applications.

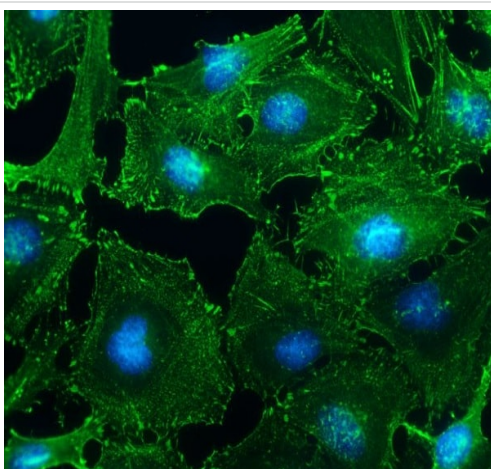
The application notes include recommended starting dilutions; optimal dilutions/concentrations should be determined by the end user.

Application	Abreviews	Notes
WB		1/500 - 1/3000. Predicted molecular weight: 103 kDa.
ICC/IF	★★★★★ (4)	1/100 - 1/1000. Use ice-cold Methanol as fixation.
IHC-P		1/100 - 1/1000. Suggested antigen retrieval using heat mediated 10mM Citrate buffer (pH6.0) or Tris-EDTA buffer (pH8.0).

## Target

Function	F-actin cross-linking protein which is thought to anchor actin to a variety of intracellular structures. This is a bundling protein.
Tissue specificity	Expressed in both skeletal and cardiac muscle.
Involvement in disease	Defects in ACTN2 are the cause of cardiomyopathy dilated type 1AA (CMD1AA) [MIM:612158]. Dilated cardiomyopathy is a disorder characterized by ventricular dilation and impaired systolic function, resulting in congestive heart failure and arrhythmia. Patients are at risk of premature death.
Sequence similarities	Belongs to the alpha-actinin family. Contains 1 actin-binding domain. Contains 2 CH (calponin-homology) domains. Contains 2 EF-hand domains. Contains 4 spectrin repeats.
Cellular localization	Cytoplasm > myofibril > sarcomere > Z line. Colocalizes with MYOZ1 and FLNC at the Z-lines of skeletal muscle.

## Images

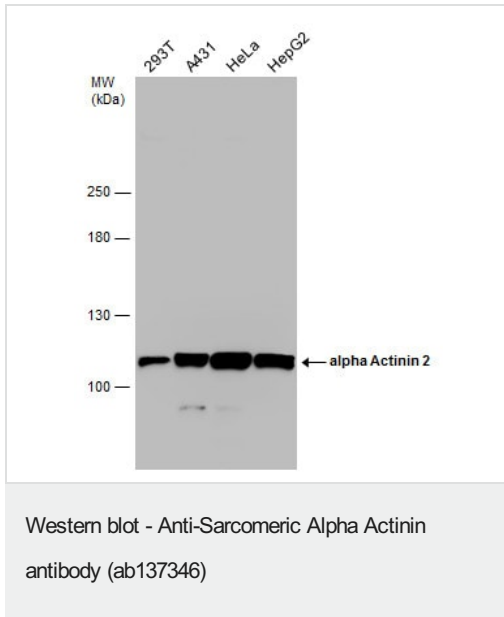


Immunocytochemistry/ Immunofluorescence - Anti-Sarcomeric Alpha Actinin antibody (ab137346)

Immunofluorescent analysis of ice-cold methanol fixed (5 minutes) HeLa cells labeling Sarcomeric Alpha Actinin with ab137346 at 1/500 dilution (4°C overnight), followed by Rabbit IgG antibody (Alexa Fluor 488) (keep from light) at 1/2000 dilution (room temperature for 1 hour) (green). Blue: Hoechst 33342 staining.

Blocking: 2.5% BSA/PBS for 30 minutes.

Washing: PBS, 3 x 3 minutes.



**All lanes :** Anti-Sarcomeric Alpha Actinin antibody (ab137346) at 1/1000 dilution

**Lane 1 :** 293T cells

**Lane 2 :** A431 cells

**Lane 3 :** HeLa cells

**Lane 4 :** HepG2 cells

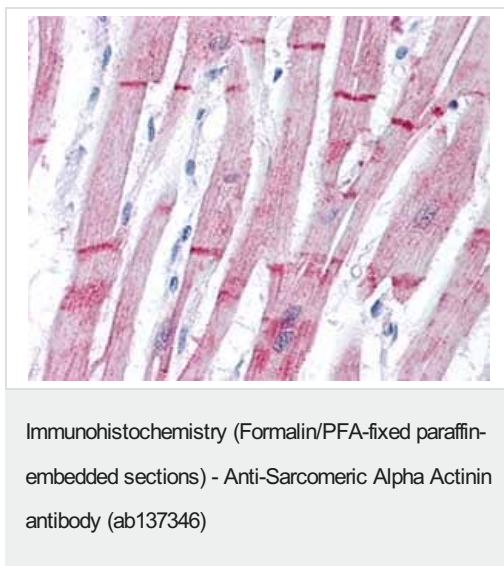
Lysates/proteins at 30 µg per lane.

### Secondary

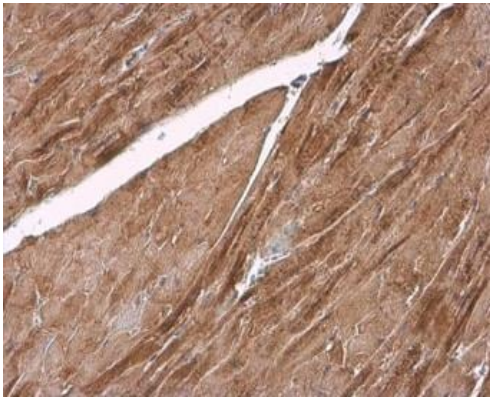
**All lanes :** HRP conjugated anti-rabbit IgG antibody

**Predicted band size:** 103 kDa

### 5% SDS-PAGE

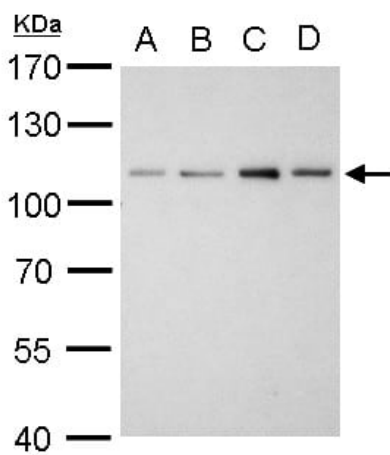


Immunohistochemical analysis of paraffin-embedded Human heart tissue labelling Sarcomeric Alpha Actinin with ab137346 at 10 µg/ml. Antigen retrieval: EDTA based, pH 8.0, buffer, 15minutes.



Immunohistochemistry (Formalin/PFA-fixed paraffin-embedded sections) - Anti-Sarcomeric Alpha Actinin antibody (ab137346)

Immunohistochemical analysis of paraffin-embedded mouse heart tissue labelling Sarcomeric Alpha Actinin with ab137346 at 1/2000. Antigen retrieval: Citrate buffer, pH 6.0, 15 minutes.



Western blot - Anti-Sarcomeric Alpha Actinin antibody (ab137346)

**All lanes :** Anti-Sarcomeric Alpha Actinin antibody (ab137346) at 1/1000 dilution

**Lane 1 :** Neuro2A whole cell lysate/extract

**Lane 2 :** GL261 whole cell lysate/extract

**Lane 3 :** C8D30 whole cell lysate/extract

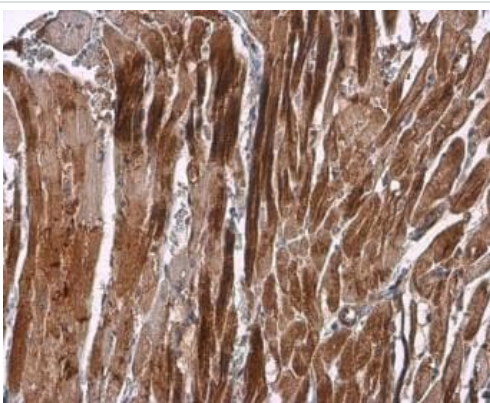
**Lane 4 :** NIH-3T3 whole cell lysate/extract

Lysates/proteins at 30 µg per lane.

#### Secondary

**All lanes :** HRP-conjugated anti-rabbit IgG antibody

**Predicted band size:** 103 kDa



Immunohistochemistry (Formalin/PFA-fixed paraffin-embedded sections) - Anti-Sarcomeric Alpha Actinin antibody (ab137346)

Immunohistochemical analysis of paraffin-embedded rat heart tissue labelling Sarcomeric Alpha Actinin with ab137346 at 1/2000. Antigen retrieval: Citrate buffer, pH 6.0, 15 minutes.

**Please note:** All products are "FOR RESEARCH USE ONLY. NOT FOR USE IN DIAGNOSTIC PROCEDURES"

### **Our Abpromise to you: Quality guaranteed and expert technical support**

---

- Replacement or refund for products not performing as stated on the datasheet
- Valid for 12 months from date of delivery
- Response to your inquiry within 24 hours
  
- We provide support in Chinese, English, French, German, Japanese and Spanish
- Extensive multi-media technical resources to help you
- We investigate all quality concerns to ensure our products perform to the highest standards

If the product does not perform as described on this datasheet, we will offer a refund or replacement. For full details of the Abpromise, please visit <https://www.abcam.com/abpromise> or contact our technical team.

### **Terms and conditions**

---

- Guarantee only valid for products bought direct from Abcam or one of our authorized distributors