


Anti-Sarcomeric Alpha Actinin antibody ab227216

[1 References](#) [5 Images](#)

Overview

Product name	Anti-Sarcomeric Alpha Actinin antibody
Description	Rabbit polyclonal to Sarcomeric Alpha Actinin
Host species	Rabbit
Tested applications	Suitable for: IHC-P, WB, ICC/IF
Species reactivity	Reacts with: Mouse, Rat, Human Predicted to work with: Chicken, Cow, Pig 
Immunogen	Recombinant fragment within Human Sarcomeric Alpha Actinin (internal sequence). The exact sequence is proprietary. Database link: P35609
Positive control	WB: A431, NCI-H1299 and NIH/3T3 whole cell lysates; Rat heart tissue extract. IHC-P: Human breast carcinoma tissue. ICC/IF: HeLa cells.
General notes	<p>The Life Science industry has been in the grips of a reproducibility crisis for a number of years. Abcam is leading the way in addressing this with our range of recombinant monoclonal antibodies and knockout edited cell lines for gold-standard validation. Please check that this product meets your needs before purchasing.</p> <p>If you have any questions, special requirements or concerns, please send us an inquiry and/or contact our Support team ahead of purchase. Recommended alternatives for this product can be found below, along with publications, customer reviews and Q&As</p>

Properties

Form	Liquid
Storage instructions	Shipped at 4°C. Store at +4°C short term (1-2 weeks). Upon delivery aliquot. Store at -20°C long term. Avoid freeze / thaw cycle.
Storage buffer	pH: 7.00 Preservative: 0.01% Thimerosal (merthiolate) Constituents: 1.21% Tris, 0.75% Glycine, 10% Glycerol (glycerin, glycerine)
Purity	Immunogen affinity purified
Clonality	Polyclonal
Isotype	IgG

Applications

The Abpromise guarantee

Our **Abpromise guarantee** covers the use of ab227216 in the following tested applications.

The application notes include recommended starting dilutions; optimal dilutions/concentrations should be determined by the end user.

Application	Abreviews	Notes
IHC-P		1/100 - 1/1000.
WB		1/500 - 1/10000. Predicted molecular weight: 104 kDa.
ICC/IF		1/100 - 1/1000.

Target

Function

F-actin cross-linking protein which is thought to anchor actin to a variety of intracellular structures. This is a bundling protein.

Tissue specificity

Expressed in both skeletal and cardiac muscle.

Involvement in disease

Defects in ACTN2 are the cause of cardiomyopathy dilated type 1AA (CMD1AA) [MIM:612158]. Dilated cardiomyopathy is a disorder characterized by ventricular dilation and impaired systolic function, resulting in congestive heart failure and arrhythmia. Patients are at risk of premature death.

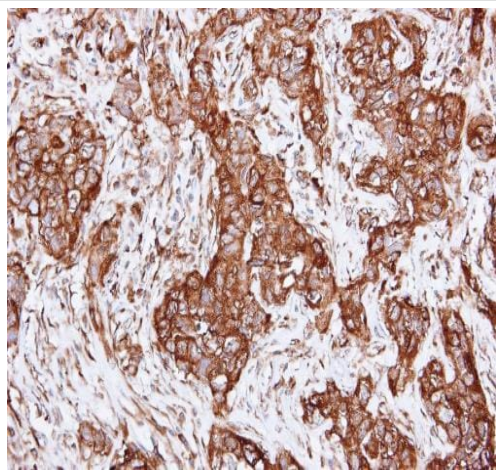
Sequence similarities

Belongs to the alpha-actinin family.
Contains 1 actin-binding domain.
Contains 2 CH (calponin-homology) domains.
Contains 2 EF-hand domains.
Contains 4 spectrin repeats.

Cellular localization

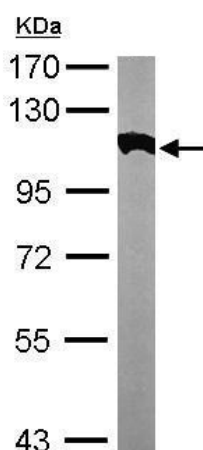
Cytoplasm > myofibril > sarcomere > Z line. Colocalizes with MYOZ1 and FLNC at the Z-lines of skeletal muscle.

Images



Immunohistochemistry (Formalin/PFA-fixed paraffin-embedded sections) - Anti-Sarcomeric Alpha Actinin antibody (ab227216)

Paraffin-embedded human breast carcinoma tissue stained for Sarcomeric Alpha Actinin using ab227216 at 1/250 dilution in immunohistochemical analysis.

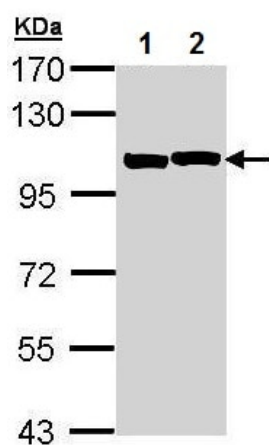


Western blot - Anti-Sarcomeric Alpha Actinin antibody (ab227216)

Anti-Sarcomeric Alpha Actinin antibody (ab227216) at 1/3000 dilution + NIH/3T3 (mouse embryonic fibroblast cell line) whole cell lysate at 30 μ g

Predicted band size: 104 kDa

7.5% SDS-PAGE gel.



Western blot - Anti-Sarcomeric Alpha Actinin antibody (ab227216)

All lanes : Anti-Sarcomeric Alpha Actinin antibody (ab227216) at 1/1000 dilution

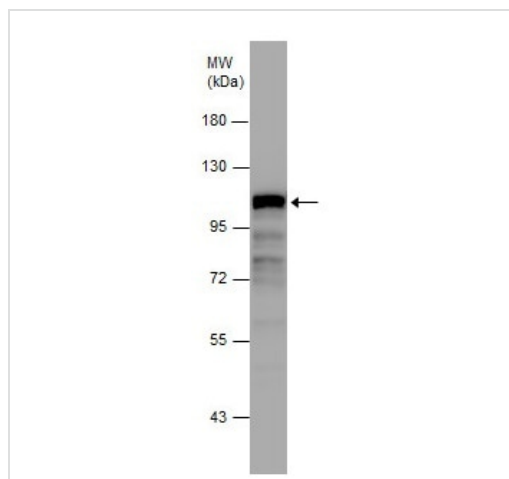
Lane 1 : A431 (human epidermoid carcinoma cell line) whole cell lysate

Lane 2 : NCI-H1299 (human lung carcinoma cell line) whole cell lysate

Lysates/proteins at 30 μ g per lane.

Predicted band size: 104 kDa

7.5% SDS-PAGE gel.

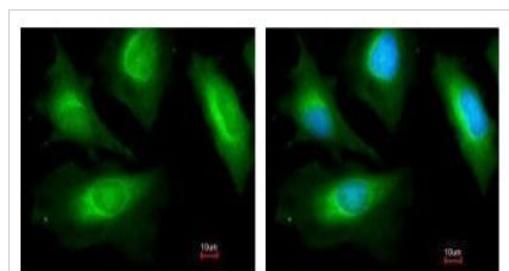


Western blot - Anti-Sarcomeric Alpha Actinin antibody (ab227216)

Anti-Sarcomeric Alpha Actinin antibody (ab227216) at 1/5000 dilution + Rat heart tissue extract at 50 µg

Predicted band size: 104 kDa

7.5% SDS-PAGE gel.



Immunocytochemistry/ Immunofluorescence - Anti-Sarcomeric Alpha Actinin antibody (ab227216)

PFA-fixed HeLa (human epithelial cell line from cervix adenocarcinoma) cells stained for Sarcomeric Alpha Actinin (green) using ab227216 at 1/200 dilution in ICC/IF.

Right-hand panel: Merged with DNA probe.

Please note: All products are "FOR RESEARCH USE ONLY. NOT FOR USE IN DIAGNOSTIC PROCEDURES"

Our Abpromise to you: Quality guaranteed and expert technical support

- Replacement or refund for products not performing as stated on the datasheet
- Valid for 12 months from date of delivery
- Response to your inquiry within 24 hours
- We provide support in Chinese, English, French, German, Japanese and Spanish
- Extensive multi-media technical resources to help you
- We investigate all quality concerns to ensure our products perform to the highest standards

If the product does not perform as described on this datasheet, we will offer a refund or replacement. For full details of the Abpromise, please visit <https://www.abcam.com/abpromise> or contact our technical team.

Terms and conditions

- Guarantee only valid for products bought direct from Abcam or one of our authorized distributors