


Anti-Sarcomeric Alpha Actinin antibody ab90776

★★★★★ [1 Abreviews](#) [8 References](#) [2 Images](#)

Overview

Product name	Anti-Sarcomeric Alpha Actinin antibody
Description	Rabbit polyclonal to Sarcomeric Alpha Actinin
Host species	Rabbit
Tested applications	Suitable for: IHC-P, WB
Species reactivity	Reacts with: Human Predicted to work with: Mouse, Chicken, Cow 
Immunogen	Synthetic peptide corresponding to Human Sarcomeric Alpha Actinin aa 850 to the C-terminus conjugated to keyhole limpet haemocyanin. (Peptide available as ab100828)
Positive control	This antibody gave a positive signal in the following human tissue lysates: Skeletal Muscle; Heart.
General notes	<p>The Life Science industry has been in the grips of a reproducibility crisis for a number of years. Abcam is leading the way in addressing this with our range of recombinant monoclonal antibodies and knockout edited cell lines for gold-standard validation. Please check that this product meets your needs before purchasing.</p> <p>If you have any questions, special requirements or concerns, please send us an inquiry and/or contact our Support team ahead of purchase. Recommended alternatives for this product can be found below, along with publications, customer reviews and Q&As</p>

Properties

Form	Liquid
Storage instructions	Shipped at 4°C. Store at +4°C short term (1-2 weeks). Upon delivery aliquot. Store at -20°C or -80°C. Avoid freeze / thaw cycle.
Storage buffer	pH: 7.40 Preservative: 0.02% Sodium azide Constituent: PBS Batches of this product that have a concentration < 1mg/ml may have BSA added as a stabilising agent. If you would like information about the formulation of a specific lot, please contact our scientific support team who will be happy to help.
Purity	Immunogen affinity purified

Clonality	Polyclonal
Isotype	IgG

Applications

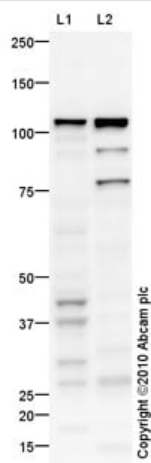
The Abpromise guarantee Our **Abpromise guarantee** covers the use of ab90776 in the following tested applications. The application notes include recommended starting dilutions; optimal dilutions/concentrations should be determined by the end user.

Application	Abreviews	Notes
IHC-P		Use a concentration of 1 µg/ml.
WB	★★★★★ (1)	Use a concentration of 1 µg/ml. Detects a band of approximately 104 kDa (predicted molecular weight: 104 kDa).

Target

Function	F-actin cross-linking protein which is thought to anchor actin to a variety of intracellular structures. This is a bundling protein.
Tissue specificity	Expressed in both skeletal and cardiac muscle.
Involvement in disease	Defects in ACTN2 are the cause of cardiomyopathy dilated type 1AA (CMD1AA) [MIM:612158]. Dilated cardiomyopathy is a disorder characterized by ventricular dilation and impaired systolic function, resulting in congestive heart failure and arrhythmia. Patients are at risk of premature death.
Sequence similarities	Belongs to the alpha-actinin family. Contains 1 actin-binding domain. Contains 2 CH (calponin-homology) domains. Contains 2 EF-hand domains. Contains 4 spectrin repeats.
Cellular localization	Cytoplasm > myofibril > sarcomere > Z line. Colocalizes with MYOZ1 and FLNC at the Z-lines of skeletal muscle.

Images



Western blot - Anti-Sarcomeric Alpha Actinin antibody (ab90776)

All lanes : Anti-Sarcomeric Alpha Actinin antibody (ab90776) at 1 µg/ml

Lane 1 : Human skeletal muscle tissue lysate - total protein ([ab29330](#))

Lane 2 : Human heart tissue lysate - total protein ([ab29431](#))

Lysates/proteins at 10 µg per lane.

Secondary

All lanes : Goat Anti-Rabbit IgG H&L (HRP) preadsorbed ([ab97080](#)) at 1/5000 dilution

Developed using the ECL technique.

Performed under reducing conditions.

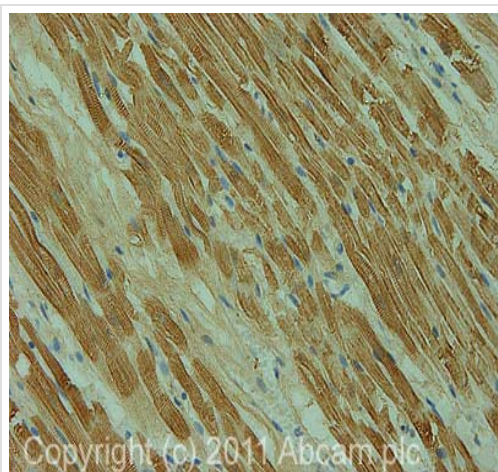
Predicted band size: 104 kDa

Observed band size: 104 kDa

Additional bands at: 27 kDa, 30 kDa, 45 kDa, 80 kDa, 90 kDa.

We are unsure as to the identity of these extra bands.

Exposure time: 3 minutes



Immunohistochemistry (Formalin/PFA-fixed paraffin-embedded sections) - Anti-Sarcomeric Alpha Actinin antibody (ab90776)

IHC image of Sarcomeric Alpha Actinin staining in human Heart FFPE section, performed on a BondTM system using the standard protocol F. The section was pre-treated using heat mediated antigen retrieval with sodium citrate buffer (pH6, epitope retrieval solution 1) for 20 mins. The section was then incubated with ab90776, 1 µg/ml, for 15 mins at room temperature and detected using an HRP conjugated compact polymer system. DAB was used as the chromogen. The section was then counterstained with haematoxylin and mounted with DPX

Please note: All products are "FOR RESEARCH USE ONLY. NOT FOR USE IN DIAGNOSTIC PROCEDURES"

Our Abpromise to you: Quality guaranteed and expert technical support

- Replacement or refund for products not performing as stated on the datasheet
- Valid for 12 months from date of delivery
- Response to your inquiry within 24 hours

- We provide support in Chinese, English, French, German, Japanese and Spanish
- Extensive multi-media technical resources to help you
- We investigate all quality concerns to ensure our products perform to the highest standards

If the product does not perform as described on this datasheet, we will offer a refund or replacement. For full details of the Abpromise, please visit <https://www.abcam.com/abpromise> or contact our technical team.

Terms and conditions

- Guarantee only valid for products bought direct from Abcam or one of our authorized distributors