


## Product datasheet

# Anti-Sarcomeric Alpha Actinin antibody [EP2530Y] ab68168

Recombinant RabMAb

[3 References](#) [3 Images](#)

### Overview

<b>Product name</b>	Anti-Sarcomeric Alpha Actinin antibody [EP2530Y]
<b>Description</b>	Rabbit monoclonal [EP2530Y] to Sarcomeric Alpha Actinin
<b>Host species</b>	Rabbit
<b>Tested applications</b>	<b>Suitable for:</b> WB, IHC-P <b>Unsuitable for:</b> Flow Cyt or ICC/IF
<b>Species reactivity</b>	<b>Reacts with:</b> Human <b>Predicted to work with:</b> Mouse, Rat 
<b>Immunogen</b>	Synthetic peptide within Human Sarcomeric Alpha Actinin aa 750-850 (C terminal). The exact sequence is proprietary.
<b>Positive control</b>	Human skeletal muscle lysate and human muscle tissue.
<b>General notes</b>	<p>This product is a recombinant monoclonal antibody, which offers several advantages including:</p> <ul style="list-style-type: none"> <li>- High batch-to-batch consistency and reproducibility</li> <li>- Improved sensitivity and specificity</li> <li>- Long-term security of supply</li> <li>- Animal-free production</li> </ul> <p>For more information <a href="#">see here</a>.</p> <p>Our RabMAb<sup>®</sup> technology is a patented hybridoma-based technology for making rabbit monoclonal antibodies. For details on our patents, please refer to <a href="#">RabMAb<sup>®</sup> patents</a>.</p>

### Properties

<b>Form</b>	Liquid
<b>Storage instructions</b>	Shipped at 4°C. Store at -20°C. Stable for 12 months at -20°C.
<b>Storage buffer</b>	pH: 7.2 Preservative: 0.05% Sodium azide Constituents: 0.1% BSA, 40% Glycerol (glycerin, glycerine), 9.85% Tris glycine, 50% Tissue culture supernatant
<b>Purity</b>	Tissue culture supernatant

<b>Clonality</b>	Monoclonal
<b>Clone number</b>	EP2530Y
<b>Isotype</b>	IgG

## Applications

**The Abpromise guarantee** Our **Abpromise guarantee** covers the use of ab68168 in the following tested applications. The application notes include recommended starting dilutions; optimal dilutions/concentrations should be determined by the end user.

Application	Abreviews	Notes
WB		
IHC-P		

**Application notes**

IHC-P: 1/100 - 1/250. Perform heat mediated antigen retrieval before commencing with IHC staining protocol.

IP: 1/40.

WB: 1/20000 - 1/50000. Detects a band of approximately 103 kDa (predicted molecular weight: 103 kDa).

Is unsuitable for Flow Cyt or ICC/IF.

Not yet tested in other applications.

Optimal dilutions/concentrations should be determined by the end user.

## Target

**Function** F-actin cross-linking protein which is thought to anchor actin to a variety of intracellular structures. This is a bundling protein.

**Tissue specificity** Expressed in both skeletal and cardiac muscle.

**Involvement in disease** Defects in ACTN2 are the cause of cardiomyopathy dilated type 1AA (CMD1AA) [MIM:612158]. Dilated cardiomyopathy is a disorder characterized by ventricular dilation and impaired systolic function, resulting in congestive heart failure and arrhythmia. Patients are at risk of premature death.

**Sequence similarities** Belongs to the alpha-actinin family.  
Contains 1 actin-binding domain.  
Contains 2 CH (calponin-homology) domains.  
Contains 2 EF-hand domains.  
Contains 4 spectrin repeats.

**Cellular localization** Cytoplasm > myofibril > sarcomere > Z line. Colocalizes with MYOZ1 and FLNC at the Z-lines of skeletal muscle.

## Images



Western blot - Anti-Sarcomeric Alpha Actinin antibody [EP2530Y] (ab68168)

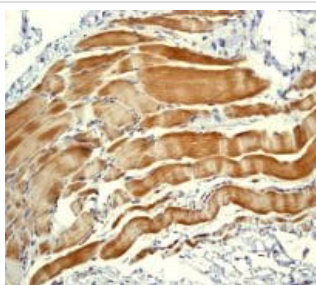
Anti-Sarcomeric Alpha Actinin antibody [EP2530Y] (ab68168) at 1/50000 dilution + human skeletal muscle lysate at 10 µg

### Secondary

goat anti-rabbit HRP at 1/2000 dilution

**Predicted band size:** 103 kDa

**Observed band size:** 103 kDa



Immunohistochemistry (Formalin/PFA-fixed paraffin-embedded sections) - Anti-Sarcomeric Alpha Actinin antibody [EP2530Y] (ab68168)

ab68168 at 1/100 dilution staining Sarcomeric Alpha Actinin in human muscles by Immunohistochemistry, Paraffin-embedded tissue.

Perform heat mediated antigen retrieval before commencing with IHC staining protocol.

### Why choose a recombinant antibody?



**Research with confidence**  
Consistent and reproducible results



**Long-term and scalable supply**  
Recombinant technology



**Success from the first experiment**  
Confirmed specificity



**Ethical standards compliant**  
Animal-free production

Anti-Sarcomeric Alpha Actinin antibody [EP2530Y] (ab68168)

**Please note:** All products are "FOR RESEARCH USE ONLY. NOT FOR USE IN DIAGNOSTIC PROCEDURES"

### Our Abpromise to you: Quality guaranteed and expert technical support

- Replacement or refund for products not performing as stated on the datasheet

- Valid for 12 months from date of delivery
- Response to your inquiry within 24 hours
- We provide support in Chinese, English, French, German, Japanese and Spanish
- Extensive multi-media technical resources to help you
- We investigate all quality concerns to ensure our products perform to the highest standards

If the product does not perform as described on this datasheet, we will offer a refund or replacement. For full details of the Abpromise, please visit <https://www.abcam.com/abpromise> or contact our technical team.

#### **Terms and conditions**

---

- Guarantee only valid for products bought direct from Abcam or one of our authorized distributors